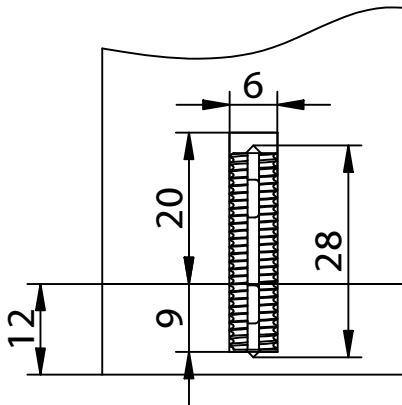


KNAPP-DOWEL 6x28 and 8x36

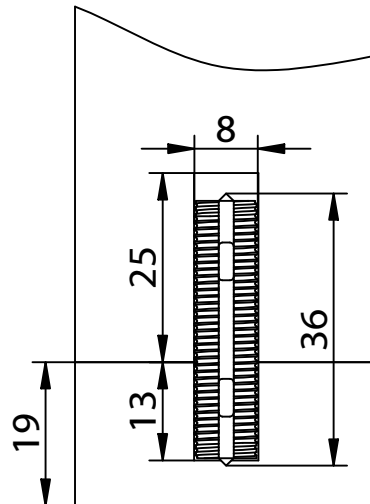
Self-tightening furniture connector

Art.No. K066 and K067

KD 6x28 Dowel bore holes
Ø 6mm for detachable
connections

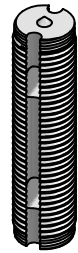


KD 8x36 Dowel bore holes
Ø 8mm for detachable
connections



6x28mm

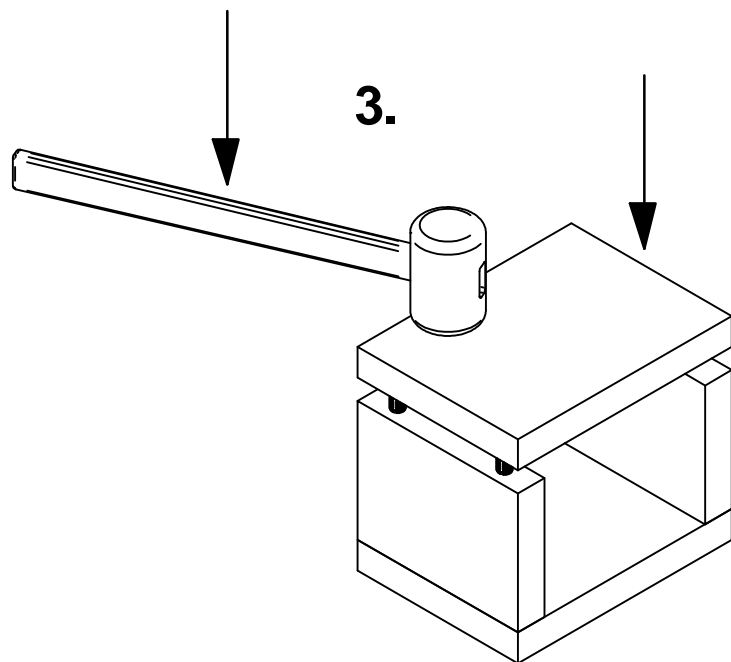
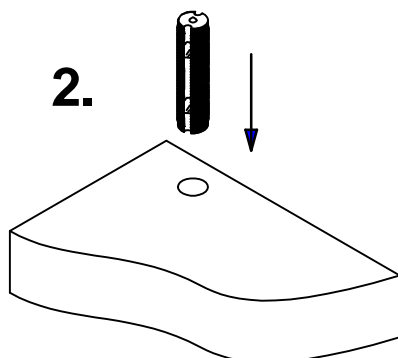
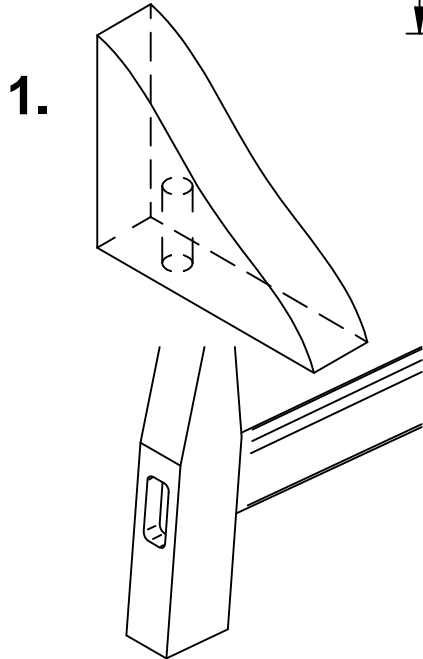
Art. No. K066

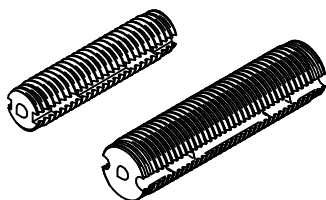


8x36mm

Art. No. K067

- 1.** Drill with dowel inserting machine or dowel-jig
- 2.** Knock in KNAPP-DOWEL in side or bottom
- 3.** Furniture Parts put together and in the case clamp or by rubber mallet caulked joints pressed





Notice de montage

TOURILLON KNAPP-KD 6x28 et 8x36

Réf. K066 et K067

Assembleur pour le meuble et la fenêtre

KD 6x28 perçage de tourillon
Ø 6mm

KD 8x36 perçage de tourillon
Ø 8mm



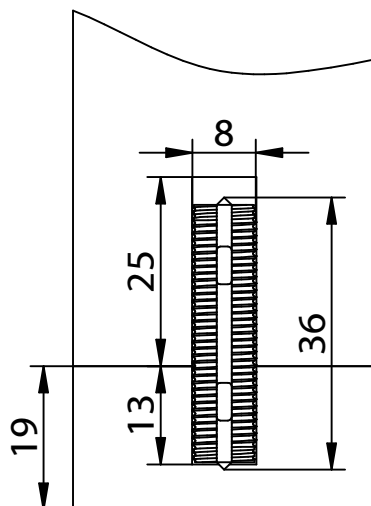
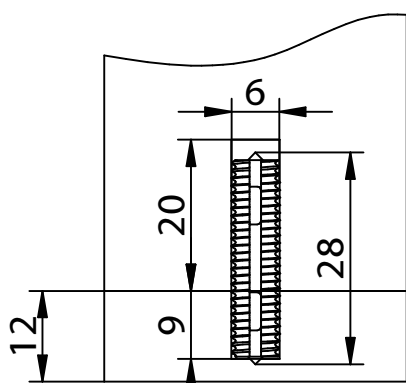
6x28mm

Réf. K066



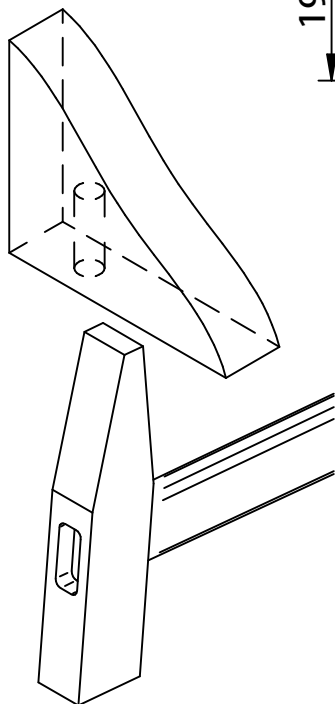
8x36mm

Réf. K067

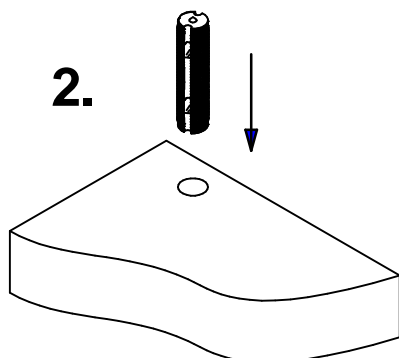


1. Effectuer les perçages des tourillons
2. Encoller à la colle PU et insérer les Tourillons-KN APP
3. Emboîter les pièces ensemble, les mettre sous presse ou serrer au serre-joint jusqu'à obtention de joints bien fermés

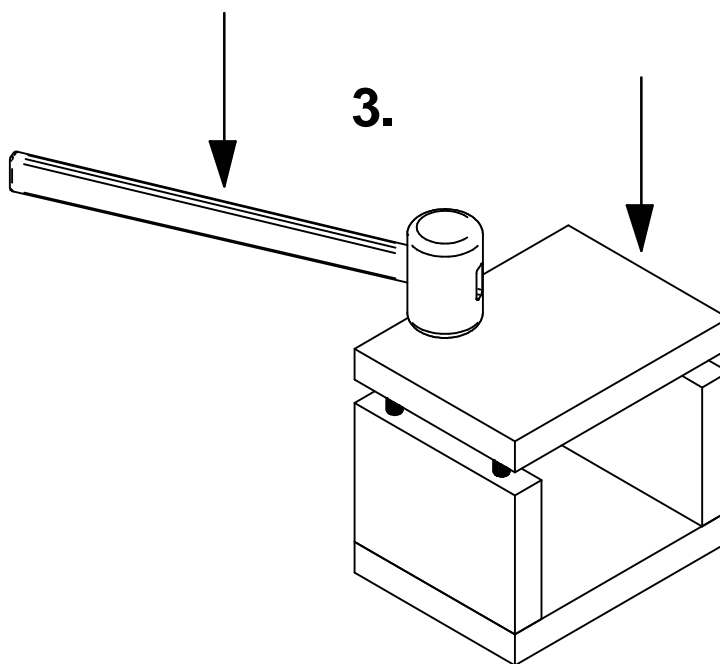
1.

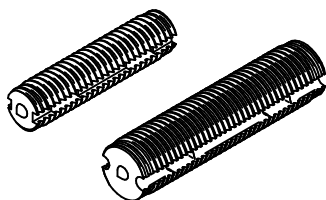


2.



3.





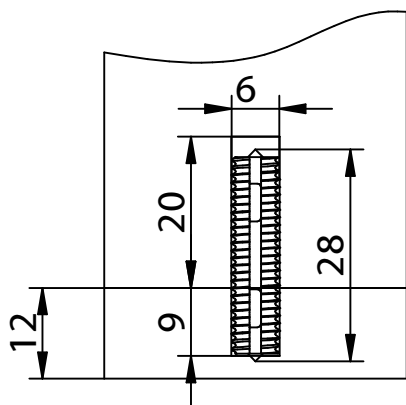
Montageanleitung

KNAPP-DÜBEL 6x28 und 8x36

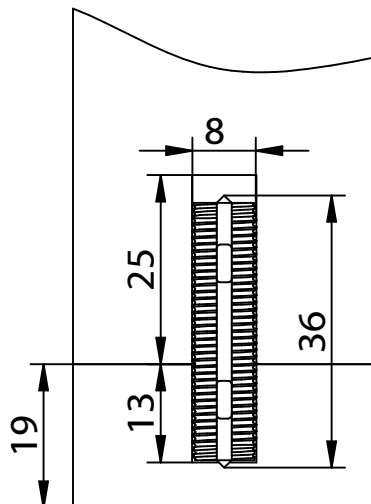
Selbstspannende Möbelverbindung

Art.Nr. K066 und K067

KD 6x28 Dübelbohrungen
 Ø 6mm für lösbare
 Verbindungen



KD 8x36 Dübelbohrungen
 Ø 8mm für lösbare
 Verbindungen



6x28mm



8x36mm

Art. Nr. K066

Art. Nr. K067

1. Dübellöcher vorbohren
2. KNAPP-DÜBEL in Seite oder Boden automatisch oder mit dem Hammer eintreiben
3. Möbelteile zusammenstecken und in der Korpuspresse oder mit dem Gummihammer fugendicht verpressen

