

# RICON® 60/40



ETA-10/0189

**Assemblage poteau - traverse**  
avec Avis Technique (EU + DE)  
**post and latch connection -**

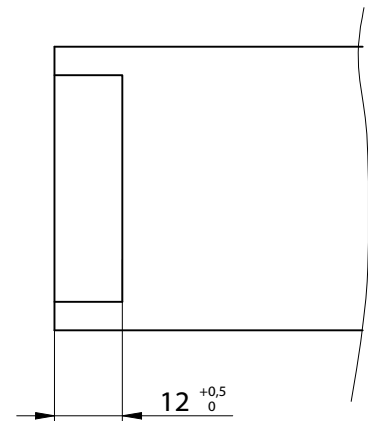
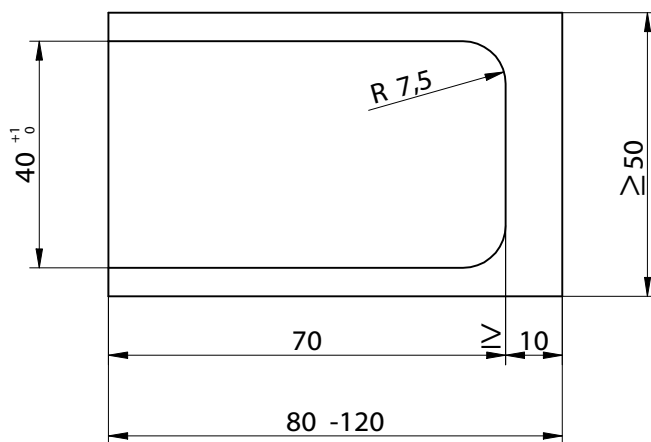
with construction supervisory approval (EU + DE)

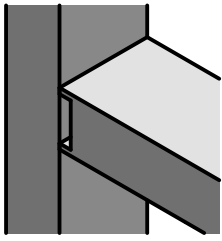
<p>RICON® 60/40</p>	<p>Vis RICON® SK / RICON® SK Scr 8x80</p> <p>Vis RICON® SK / RICON® SK Scr 8x50</p> <p>Vis RICON® SK / RICON® SK Scr 5x80</p> <p>Vis RICON® SK / RICON® SK Scr 5x50</p> <p>Goupille de verrouillage / stirrup</p>	<p>Vis tête fraisée, empreunte 6 pans / Countersunk socket screw M8x25, M8x20</p> <p>Vis tête fraisée, empreunte 6 pans / Countersunk socket screw M5x20</p> <p>Entretoise/ connecting nut M8x48, 53, 58, 78 M5x48, 53, 58, 78</p> <p>Insert / insert screw M8x18 Insert / insert screw M5x14</p>
---------------------	---	---

Assemblage simple et doublé  
Single and double connection

Assemblage poteau - traverse  
Latch and post connection

Détails du fraisage traverse /  
Milled edge latch





# Notice de montage/ Instruction Manual

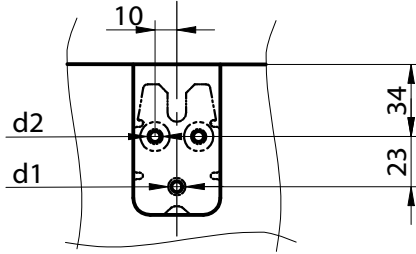
# RICON® 60/40 EA

Réf. K360

Assemblage simple  
Single connection

Assemblage poteau - traverse  
Latch and post connection

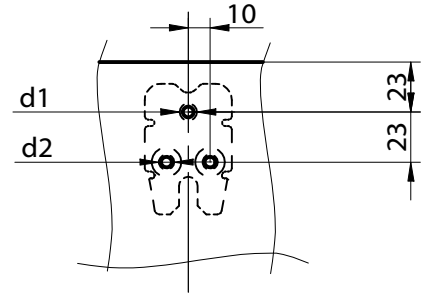
## Détail du perçage sur la traverse/ Drilling template for latch



d1...pré-percer Ø 5mm, prof. 30mm  
d1...Ø 5mm, 30mm deep predrilling

d2...pré-percer Ø 5mm, prof. 10mm sur les résineux  
d2...Ø 5mm, 10mm deep predrilling (softwood)  
d2...pré-percer Ø 3,5mm, prof. 50mm sur les feuillu  
d2...Ø 5mm, 10mm deep predrilling (hardwood)

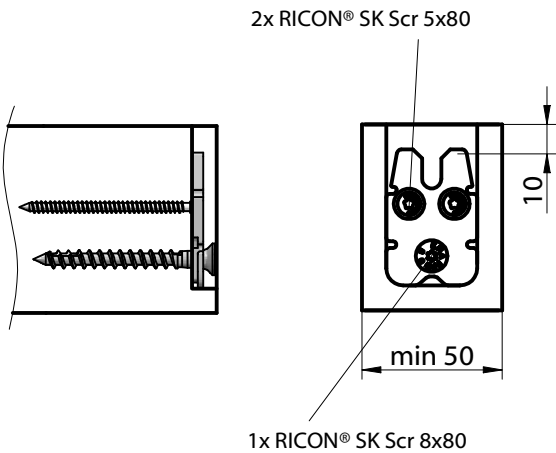
## Détail du perçage sur le poteau/ Drilling template for post



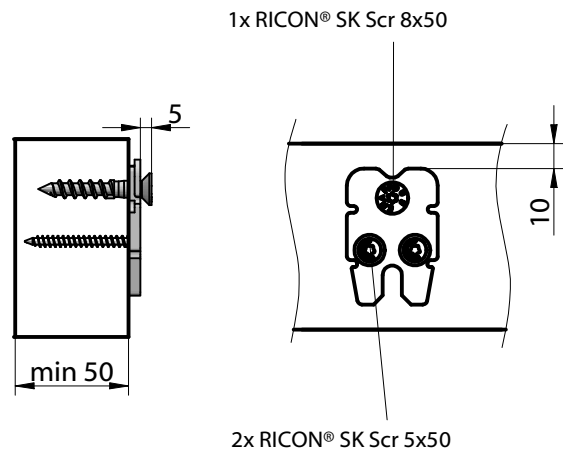
d1...pré-percer Ø 5mm, prof. 30mm  
d1...Ø 5mm, 30mm deep predrilling

d2...pré-percer Ø 5mm, prof. 10mm  
d2...Ø 5mm, 10mm deep predrilling

## Détail du vissage sur la traverse / screw template for latch

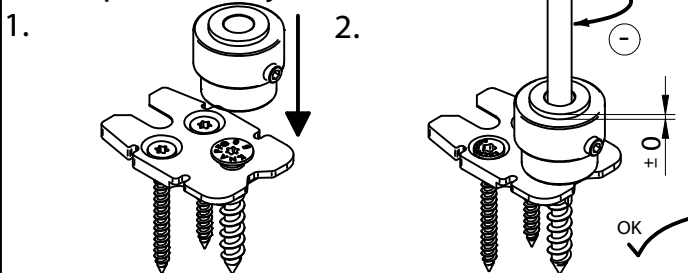


## Détail du vissage sur le poteau/ Screw template for post

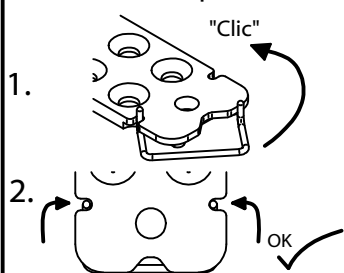


Ce dessin est la propriété de Knapp GmbH.

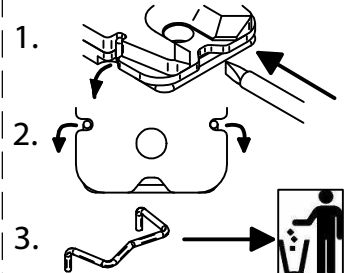
## Régler la vis d'accroche / Screw position adjustment



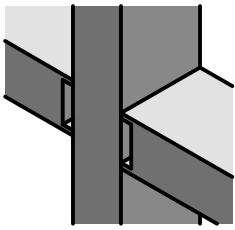
## Mettre la goupille en place/ Assemble stirrup



## Déverrouiller la goupille / Remove stirrup



© Knapp GmbH. Toutes dimensions en mm - sauf erreurs, fautes d'impression ou modifications techniques. VERSION 06.11.2013



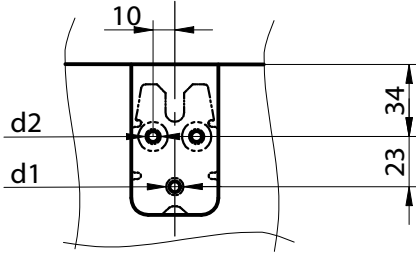
# RICON® 60/40 DA

Réf. K160/48;  
K160/58; K160/78

Assemblage doublé  
Double connection

Assemblage poteau - traverse  
Latch and post connection

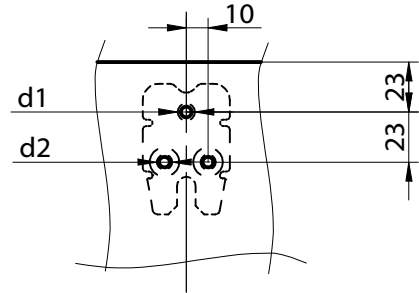
Détail du perçage sur la traverse/  
Drilling template for latch



d1...pré-percer Ø 5mm, prof. 30mm  
d1...Ø 5mm, 30mm deep predrilling

d2...pré-percer Ø 5mm, prof. 10mm sur les résineux  
d2...Ø 5mm, 10mm deep predrilling (softwood)  
d2...pré-percer Ø 3,5mm, prof. 50mm sur les feuillus  
d2...Ø 5mm, 10mm deep predrilling (hardwood)

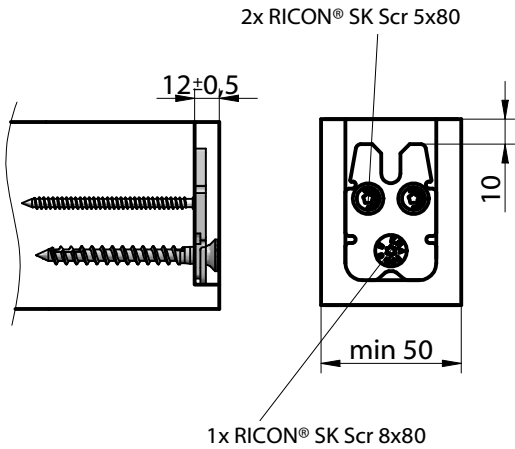
Détail du perçage sur le poteau/  
Drilling template for post



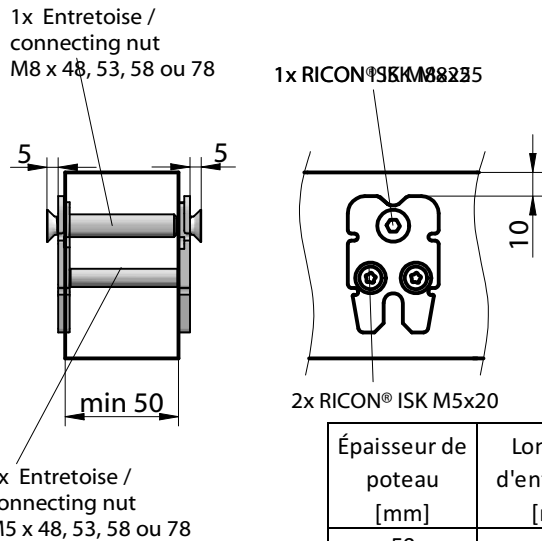
d1...pré-percer en traversant Ø 10mm,  
d1...Ø 10mm, throughhole

d2...pré-percer en traversant Ø 8mm  
d2...Ø 8mm, throughhole

Détail du vissage sur la traverse /  
screw template for latch

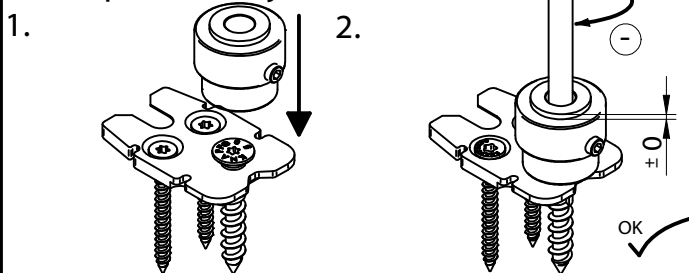


Détail du vissage sur le poteau/  
Screw template for post

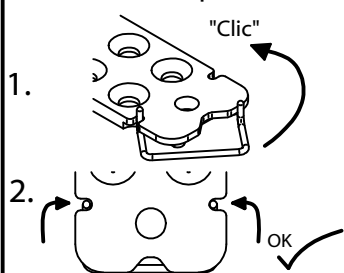


Épaisseur de poteau [mm]	Longueur d'entretoise [mm]
50	48
56	53
60	58
80	78

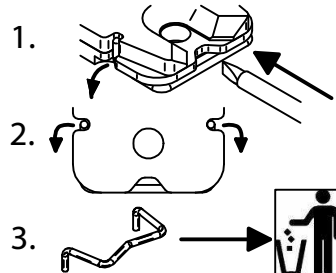
Régler la vis d'accroche /  
Screw position adjustment



Mettre la goupille en place/  
Assemble stirrup

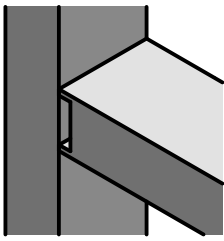


Déverrouiller la goupille /  
Remove stirrup



Ce dessin est la propriété de Knapp GmbH.

© Knapp GmbH. Toutes dimensions en mm - sauf erreurs, fautes d'impression ou modifications techniques. VERSION 06.11.2013



# Notice de Montage/ Instruction Manual

# RICON® 60/40 EAR

Réf. K260

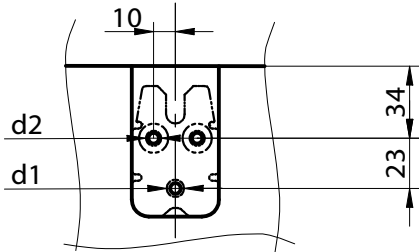
Assemblage simple avec insert

Single connection with insert screw

Assemblage poteau - traverse

Latch and post connection

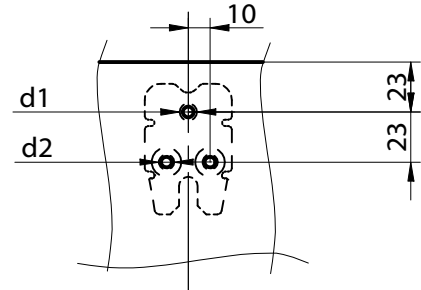
Détail du perçage sur la traverse/  
Drilling template for latch



d1...pré-percer Ø 5mm, prof. 30mm  
d1...Ø 5mm, 30mm deep predrilling

d2...pré-percer Ø 5mm, prof. 10mm sur les résineux  
d2...Ø 5mm, 10mm deep predrilling (softwood)  
d2...pré-percer Ø 3,5mm, prof. 50mm sur les feuillus  
d2...Ø 5mm, 10mm deep predrilling (hardwood)

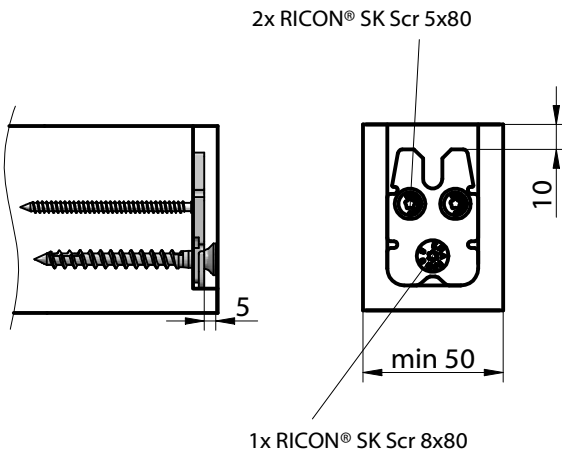
Détail du perçage sur le poteau/  
Drilling template for post



d1...pré-percer Ø 12mm, prof. 20mm  
d1...Ø 12mm, 20mm deep predrilling

d2...pré-percer Ø 8mm, prof. 15mm  
d2...Ø 8mm, 15 mm deep predrilling

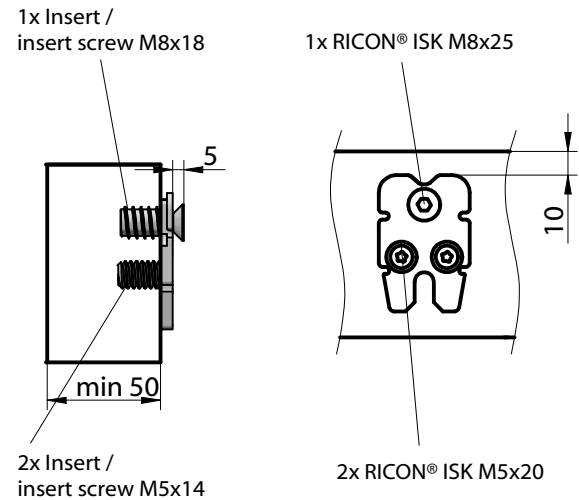
Détail du vissage sur la traverse /  
screw template for latch



2x RICON® SK Scr 5x80

1x RICON® SK Scr 8x80

Détail du vissage sur le poteau/  
Screw template for post



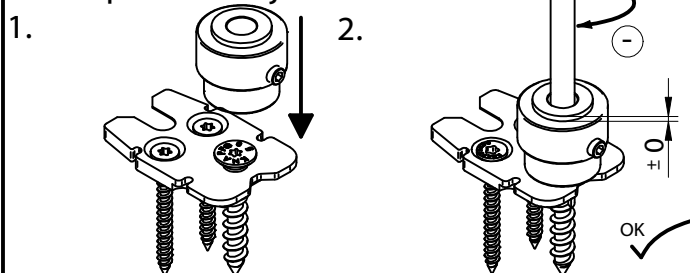
1x Insert /  
insert screw M8x18

1x RICON® ISK M8x25

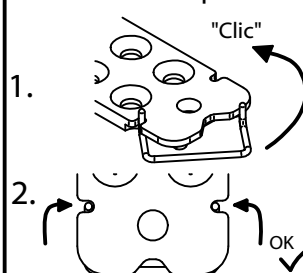
2x Insert /  
insert screw M5x14

2x RICON® ISK M5x20

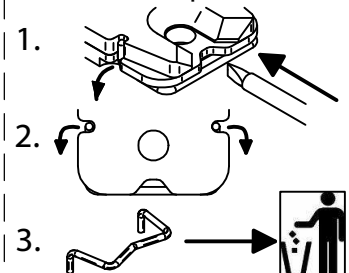
Régler la vis d'accroche /  
Screw position adjustment



Mettre la goupille en place/  
Assemble stirrup



Déverrouiller la goupille /  
Remove stirrup



# RICON® 60/40

## Assemblage de poutre secondaire sur principale

- avec Avis Technique (EU + DE)

## Main girder- joist connection

- with construction supervisory approval (EU + DE)



ETA-10/0189

**RICON® 60/40**

Vis RICON® SK /  
RICON® SK Scr 8x80

Vis RICON® SK /  
RICON® SK Scr 8x50

Vis RICON® SK /  
RICON® SK Scr 5x80

Vis RICON® SK /  
RICON® SK Scr 5x50

Goupille de verrouillage /  
stirrup

Vis tête fraisée, emprunte 6 pans /  
Countersunk socket screw  
M8x25, M8x20

Vis tête fraisée, emprunte 6 pans /  
Countersunk socket screw M5x20

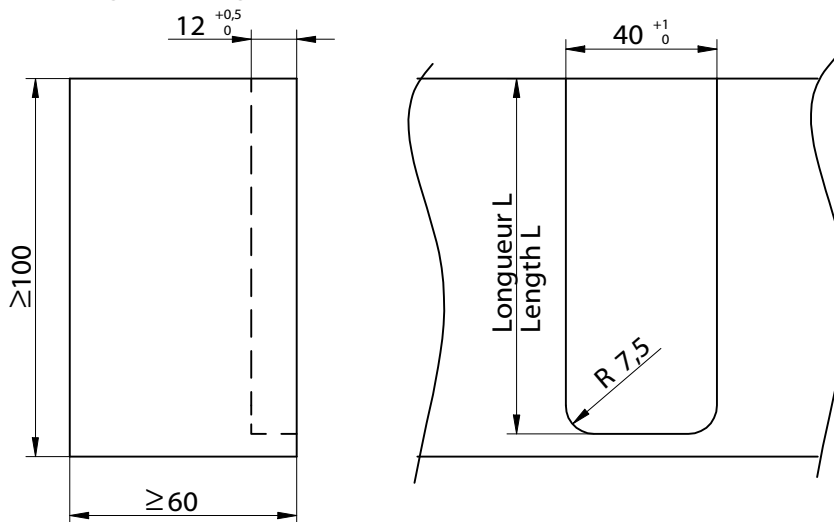
Entretoise/ connecting nut  
M8x48, 53, 58, 78  
M5x48, 53, 58, 78

Insert / insert screw M8x18  
Insert / insert screw M5x14

Assemblage simple et doublé  
Single and double connection

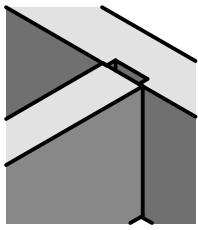
Poutre secondaire sur principale  
Main girder - joist connection

Détails du fraisage poutre principale/  
Milled edge main girder



Long. de fraisage L sur pièce principale, en relation avec Ht. pièce secondaire HN /  
Rebate length for main girder in reference of the height HN of the joist:

Hauteur / Height HN [mm]	Long. / Length L [mm]
100	90
120	110
140	130



# Notice de montage/ Instruction Manual

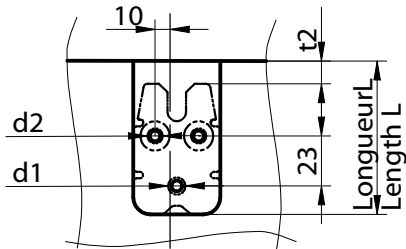
# RICON® 60/40 EA

Assemblage simple  
Single connection

Poutre secondaire sur principale  
Main girder - joist connection

Réf. K360

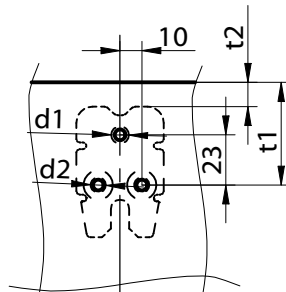
Détail du perçage sur la poutre principale / Drilling template for main girder



d1...pré-percer Ø 5mm, prof. 30mm  
d1...Ø 5mm, 30mm deep predrilling

d2...pré-percer Ø 5mm, prof. 10mm  
d2...Ø 5mm, 10mm deep predrilling

Détail du perçage sur la poutre secondaire / Drilling template for joist



d1...pré-percer Ø 5mm, prof. 30mm  
d1...Ø 5mm, 30mm deep predrilling

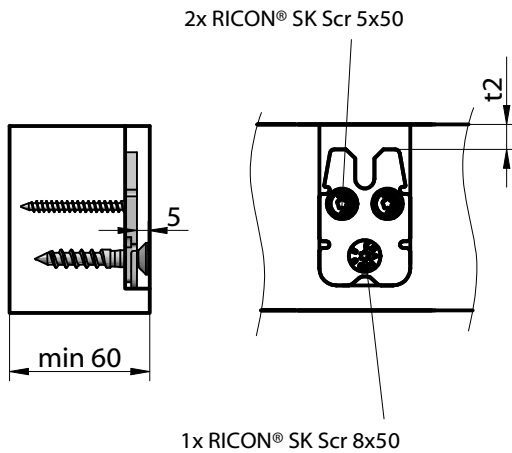
d2...pré-percer Ø 5mm, prof. 10mm sur les résineux  
d2...Ø 5mm, 10mm deep predrilling (softwood)

d2...pré-percer Ø 3,5mm, prof. 50mm sur les feuillus  
d2...Ø 5mm, 10mm deep predrilling (hardwood)

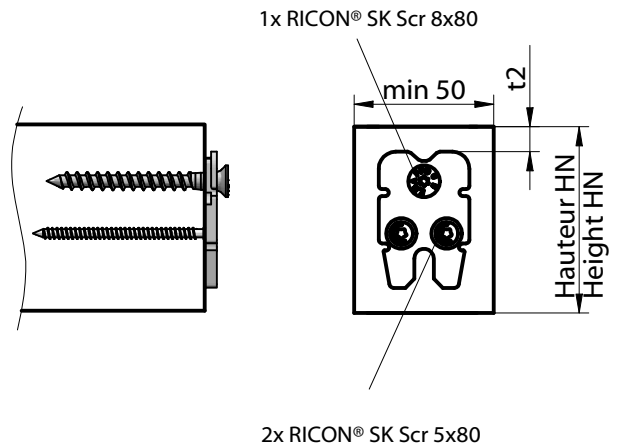
Distance de perçage t1 et t2, en relation avec la hauteur de la pièce secondaire HN / Bore measure t1 and distance t2 for joist in reference to the height HN of the joist

Hauteur / Height HN [mm]	Distance t1 [mm]	Distance t2 [mm]
100	66	30
120	86	50
140	106	70

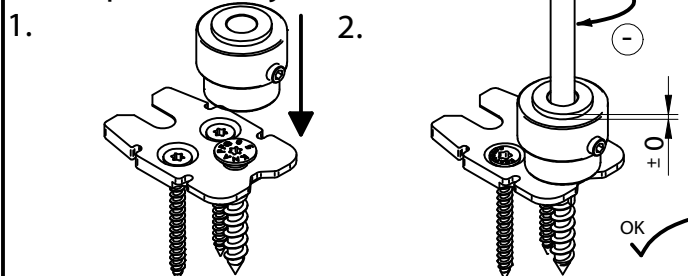
Détail du vissage sur la poutre principale / Screw template for main girder



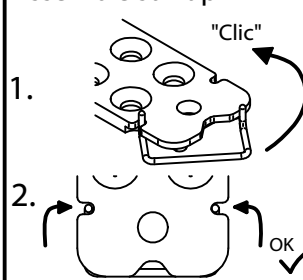
Détail du vissage sur la poutre secondaire / Screw template for joist



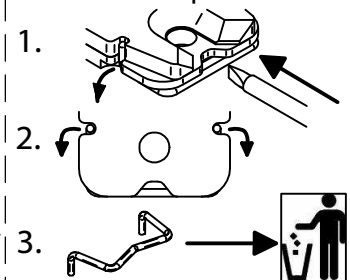
Régler la vis d'accroche / Screw position adjustment



Mettre la goupille en place / Assemble stirrup



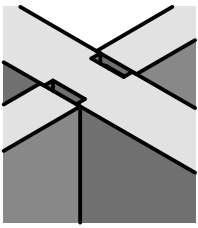
Déverrouiller la goupille / Remove stirrup



Ce dessin est la propriété de Knapp GmbH.

© Knapp GmbH. Toutes dimensions en mm - sauf erreurs, fautes d'impression ou modifications techniques. VERSION 06.11.2013





# Notice de Montage/ Instruction Manual

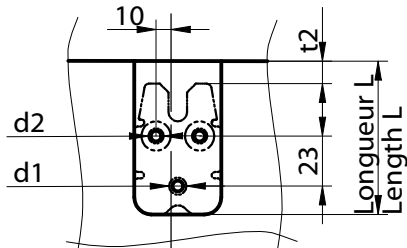
# RICON® 60/40 DA

Assemblage doublé  
Double connection

Poutre secondaire sur principale  
Main girder - joist connection

Réf. K160/48;  
K160/58; K160/78

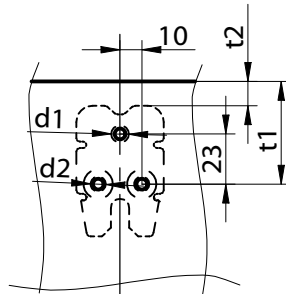
Détail du perçage sur la poutre principale / Drilling template for main girder



d1...pré-percer en traversant Ø 10mm,  
d1...Ø 10mm, throughhole

d2...pré-percer en traversant Ø 8mm  
d2...Ø 8mm, throughhole

Détail du perçage sur la poutre secondaire / Drilling template for joist



d1...pré-percer Ø 5mm, prof. 30mm  
d1...Ø 5mm, 30mm deep predrilling

d2...pré-percer Ø 5mm, prof. 10mm sur les résineux  
d2...Ø 5mm, 10mm deep predrilling (softwood)  
d2...pré-percer Ø 3,5mm, prof. 50mm sur les feuillus  
d2...Ø 5mm, 10mm deep predrilling (hardwood)

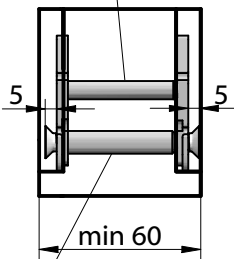
Distance de perçage t1 et t2, en relation avec la hauteur de la pièce secondaire HN / Bore measure t1 and distance t2 for joist in reference to the height HN of the joist

Hauteur / Height HN [mm]	Distance t1 [mm]	Distance t2 [mm]
100	66	30
120	86	50
140	106	70

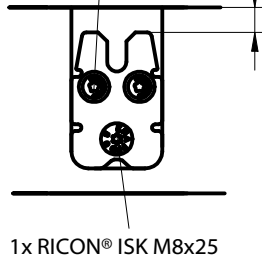
Détail du vissage sur la poutre principale / Screw template for main girder

2x entretoises / connecting nut  
M5 x 48, 53, 58 ou 78

2x RICON® ISK M5x20



1x entretoises / connecting nut  
M8 x 48, 53, 58 ou 78

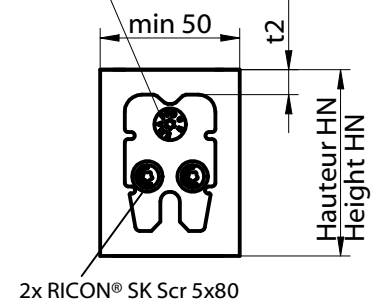
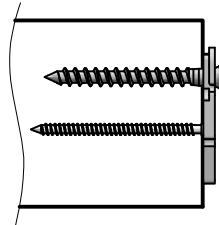


1x RICON® ISK M8x25

Ép. de pièce principale [mm]	Longueur d'entretoise [mm]
60	36
80	53

Détail du vissage sur la poutre secondaire / Screw template for joist

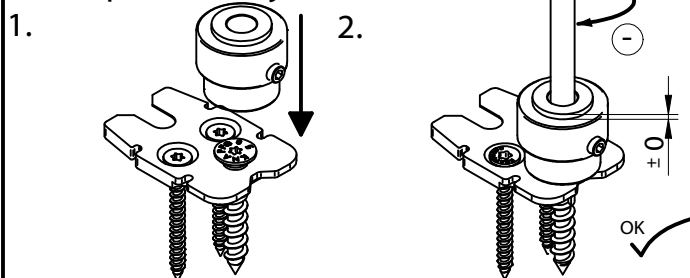
1x RICON® SK Scr 8x80



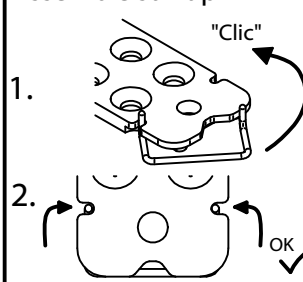
2x RICON® SK Scr 5x80

Ce dessin est la propriété de Knapp GmbH.

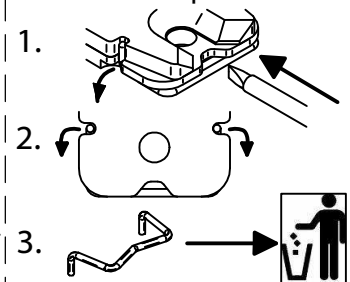
Régler la vis d'accroche / Screw position adjustment



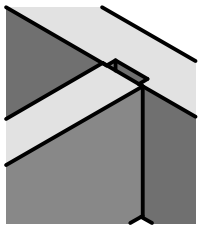
Mettre la goupille en place / Assemble stirrup



Déverrouiller la goupille / Remove stirrup



© Knapp GmbH. Toutes dimensions en mm - sauf erreurs, fautes d'impression ou modifications techniques. VERSION 06.11.2013



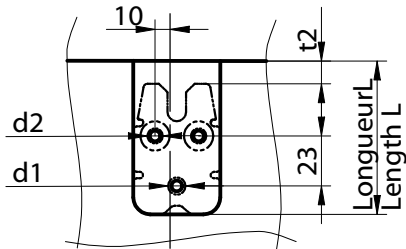
# Notice de Montage/ Instruction Manual

# RICON® 60/40 EAR

Assemblage simple avec insert Poutre secondaire sur principale  
 Single connection with insert screw Main girder - joist connection

Réf. K260

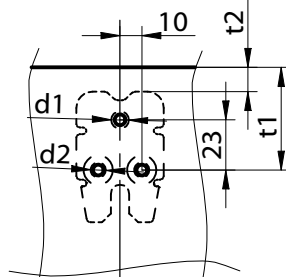
Détail du perçage sur la poutre principale / Drilling template for main girder



d1...pré-percer Ø 12mm, prof. 20 mm  
 d1...Ø 12mm, 20 mm deep predrilling

d2...pré-percer .Ø 8mm, prof. 15mm  
 d2...Ø 8mm, 15mm deep predrilling

Détail du perçage sur la poutre secondaire / Drilling template for joist



d1...pré-percer Ø 5mm, prof. 30mm  
 d1...Ø 5mm, 30mm deep predrilling

d2...pré-percer Ø 5mm, prof. 10mm sur les résineux  
 d2...Ø 5mm, 10mm deep predrilling (softwood)  
 d2...pré-percer Ø 3,5mm, prof. 50mm sur les feuillus  
 d2...Ø 3,5mm, 50mm deep predrilling (hardwood)

Distance de perçage t1 et t2, en relation avec la hauteur de la pièce secondaire HN / Bore measure t1 and distance t2 for joist in reference to the height HN of the joist

Hauteur / Height HN [mm]	Distance t1 [mm]	Distance t2 [mm]
100	66	30
120	86	50
140	106	70

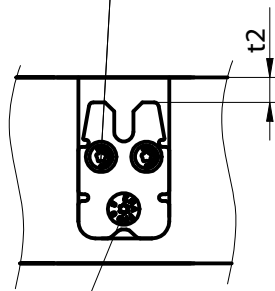
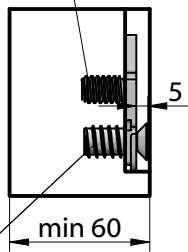
Détail du vissage sur la poutre principale / Screw template for main girder

2x Insert / insert screw M5x14

2x RICON® ISK M5x20

1x Insert / insert screw M8x18

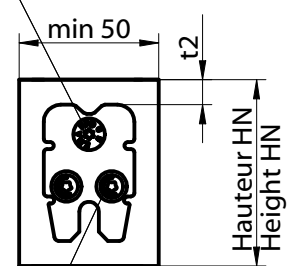
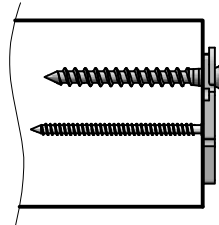
1x RICON® ISK M8x25



Détail du vissage sur la poutre secondaire / Screw template for joist

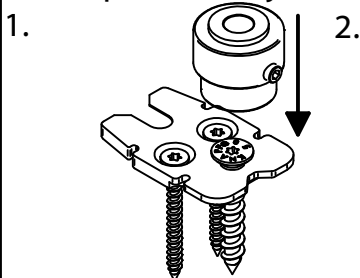
1x RICON® SK Scr 8x80

2x RICON® SK Scr 5x80

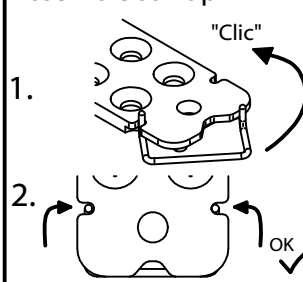


Ce dessin est la propriété de Knapp GmbH.

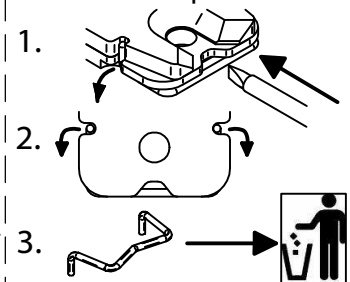
Régler la vis d'accroche / Screw position adjustment



Mettre la goupille en place / Assemble stirrup



Déverrouiller la goupille / Remove stirrup



© Knapp GmbH. Toutes dimensions en mm - sauf erreurs, fautes d'impression ou modifications techniques. VERSION 06.11.2013