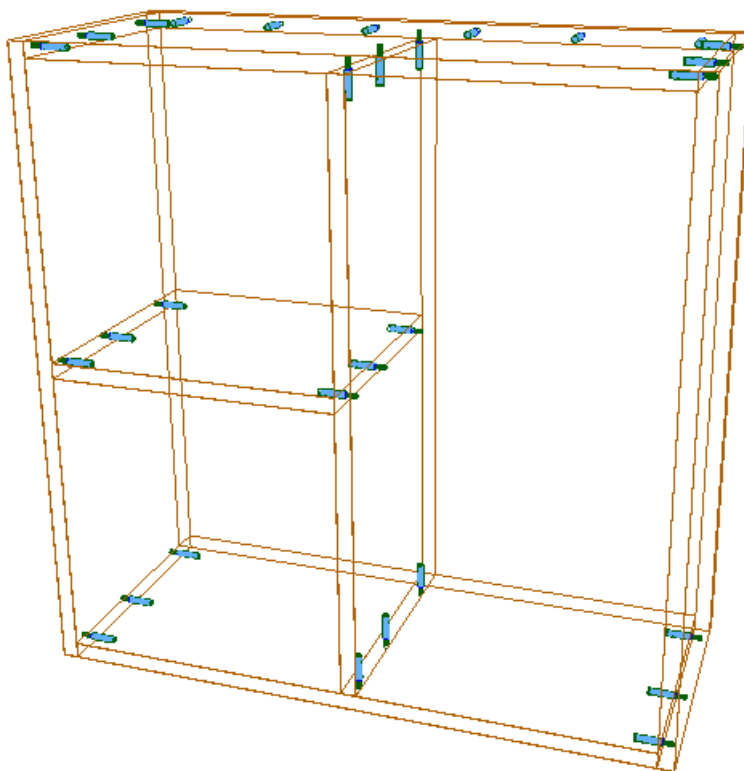


QUICK-SET

2-part Locking Dowel from KNAPP Connectors

QUICK-SET is a simple and efficient 2-part Dowel. With its glue-less design, the threaded stud and plastic sleeve firmly lock into place. RTA cabinets and closet systems are put together on or off-site quickly and easily. QUICK-SET is processed the same as a conventional wooden dowel – but in a much shorter time, as gluing and clamping is not a factor. In addition to its main area of application as a modern cabinet connector, the QUICK-SET can also be used for drawer boxes, shelving, and bookcases. For detailed information, please visit: KNAPPconnectors.com/products/quick-set-2-parts-dowel-connector/

Watch the video here: KNAPPconnectors.com/quick-set-locking-dowels-for-cabinets/



If you'd like to speak with a specialist about how our products can meet your unique needs, give us a call at **1-877-888-7773** or visit our website KNAPPconnectors.com

Installing the KNAPP Connectors QUICK-SET Package

Contents

This download contains the QUICK-SET 2-Part Locking Dowel from KNAPP Connectors, which includes the following components:

Cabinet Connectors






- | QUICK-SET 5mm/7.5mm
- | QUICK-SET 5mm/11mm
- | QUICK-SET 8mm/8mm
- | QUICK-SET 8mm/26mm

Sample Assembly Construction Method

KNAPP QUICK-SET 32mm is a sample construction method and can be used to help you to get started.

Installation

Follow the steps below to install the KNAPP QUICK-SET package:

- 1) Open Cabinet Vision Solid, go to Utilities and click on the Setup Package icon 
- 2) Click on the Open Existing Package Icon 
- 3) Select the downloaded package file (.pkg)
- 4) Click the Swap between Creation and Import Mode button 
- 5) Click the Overwrite all matches icon 3 red dots * 
- 6) Click the Import Package icon 

You can now begin using the
QUICK-SET - 2-Part Locking Dowel from KNAPP Connectors
in your Cabinet Vision Projects!

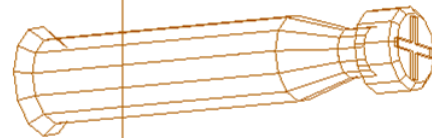
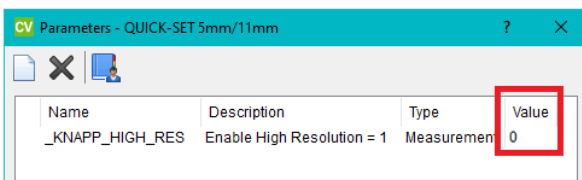
If you'd like to speak with a specialist about how our products can meet your unique needs,
give us a call at **1-877-888-7773** or visit our website **KNAPPconnectors.com**

Setup and Use

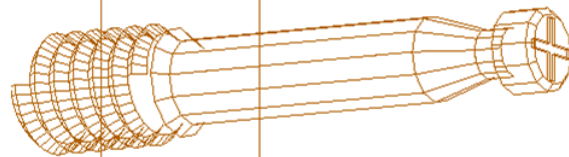
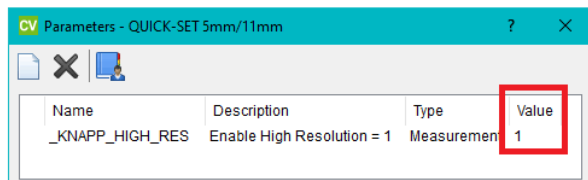
You can use the sample KNAPP QUICK-SET 32mm Construction Method to review common applications for the KNAPP QUICK-SET Connectors. You are welcome to use and modify this Construction to meet your needs or to use it as a guide to customize your own methods. Please note the following:

High Resolution vs Low Resolution Models and Computer Performance

By default High Resolution is disabled:



To enable High Resolution change the value to 1:



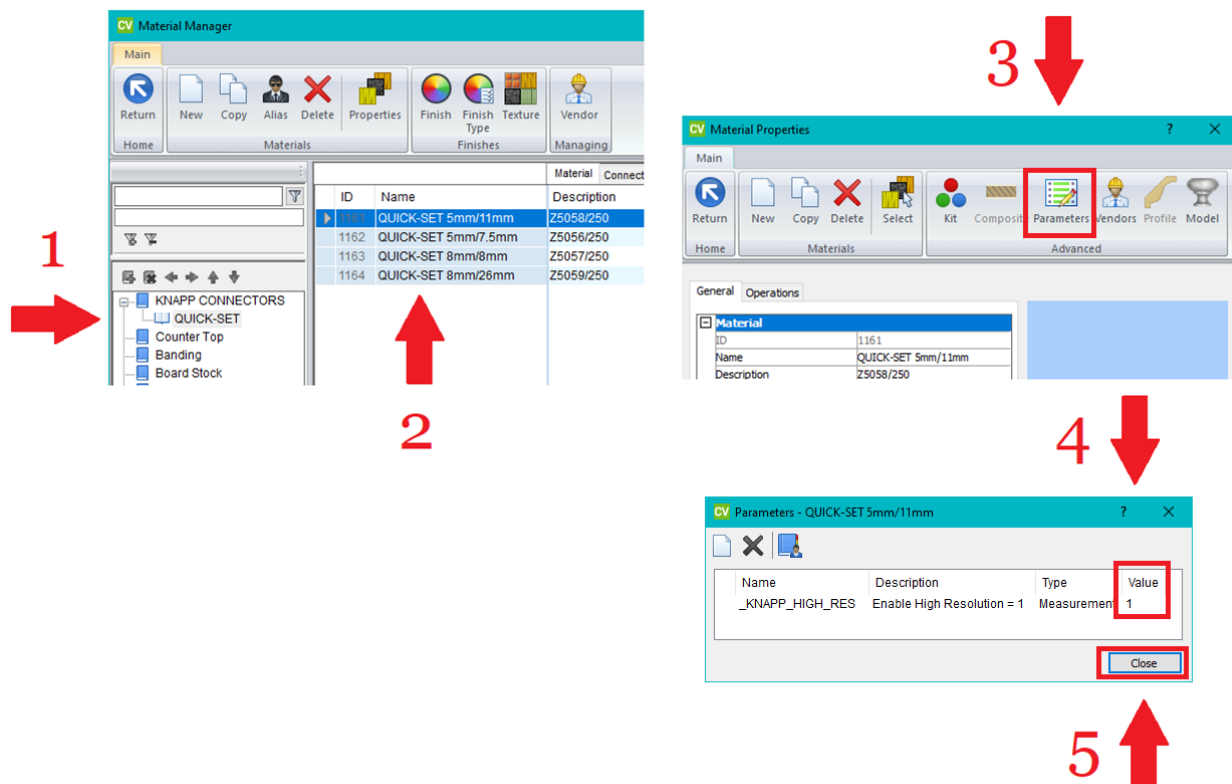
Any highly detailed 3D models imported into Cabinet Vision can cause your PC to lag and become sluggish. To avoid this, we have included a High-Resolution setting which gives the option to display the high or low-resolution model. With this package it is set to display a low-resolution model by default. In Low-Resolution mode, the screw threads of the model are not displayed. See example below.

If you'd like to speak with a specialist about how our products can meet your unique needs, give us a call at **1-877-888-7773** or visit our website KNAPPconnectors.com

Enabling High-Resolution Mode

To display the screw-threads, edit the Parameters in the Material Properties. Set the value to 1 and click OK or follow the steps below:

- 1) In the Material Manager, open the KNAPP Connectors – QUICK-SET folder.
- 2) Double click on the connector (or right click and choose Properties)
- 3) Click on the Parameters button.
- 4) Change the value to 1.
- 5) Click Close.



If you'd like to speak with a specialist about how our products can meet your unique needs, give us a call at **1-877-888-7773** or visit our website **KNAPPconnectors.com**

Notes:

Boring depth for QUICK-SET plastic sleeve should be 31-32 mm.

- If the borehole is too deep, the plastic sleeve will be pushed in too far during insertion of the metal stud. As a result, the head of the metal stud will not properly engage with the end of the plastic sleeve.
- If the borehole is not deep enough, the sleeve will not insert all the way into the bore hole, resulting in a loose joint. Possible causes for plastic sleeve not sitting flush include; shallow drill depth and sawdust in borehole.

Follow us on Social Media



If you'd like to speak with a specialist about how our products can meet your unique needs,
give us a call at [1-877-888-7773](tel:1-877-888-7773) or visit our website KNAPPconnectors.com



INSTRUCTION MANUAL

KNAPP®
connectors.com

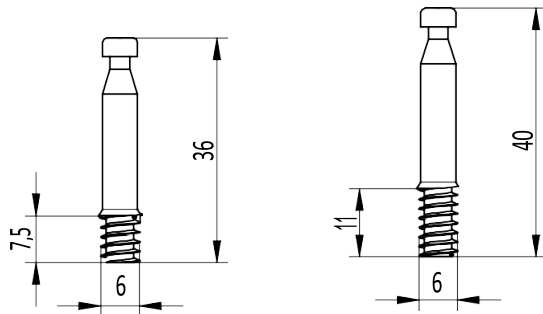
Cabinet connector

All measurement in mm (millimeters)

QUICK-SET 5 mm

Description

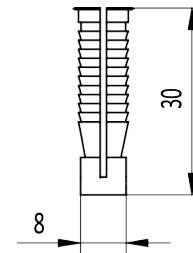
Metal stud for drillhole



Art.-No. 5058

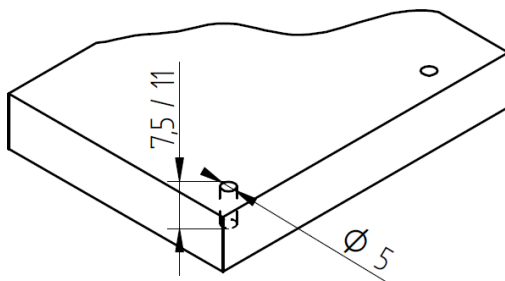
Art.-No. 5056

Plastic sleeve for drillhole



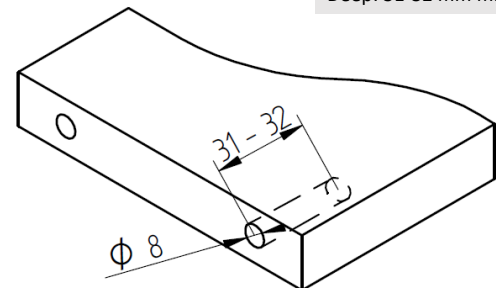
1. Metal stud for drillhole

Diameter: 5 mm
Deep: 7.5/11 mm

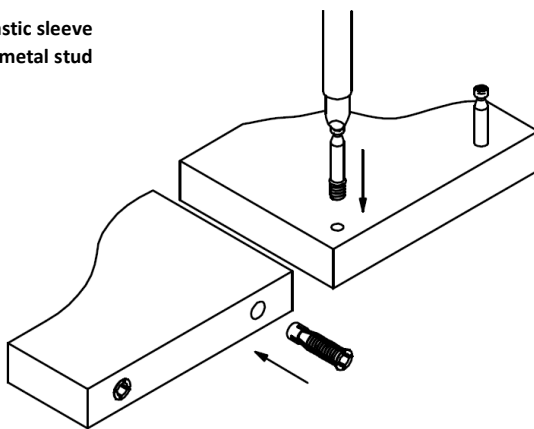


2. Drilling for plastic sleeve

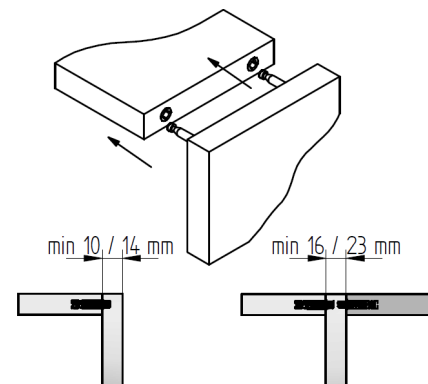
Diameter: 8 mm
Deep: 31-32 mm mm



3. Insert plastic sleeve Screw in metal stud



4. Assemble



This drawing is the exclusive property of Knapp GmbH.



INSTRUCTION MANUAL

KNAPP®
connectors.com

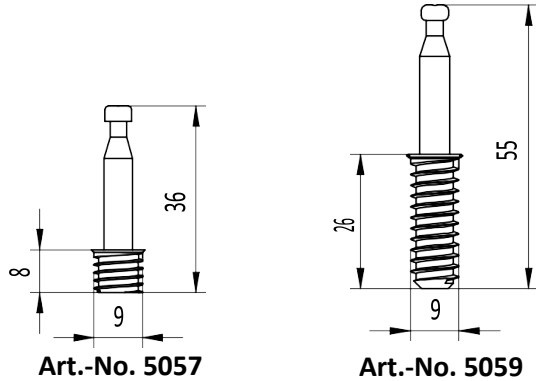
Cabinet connector

All measurement in mm (millimeters)

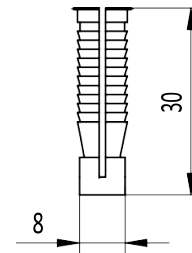
QUICK-SET 8 mm

Description

Metal stud for drillhole

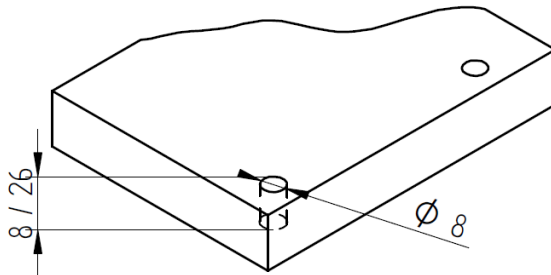


Plastic sleeve for drillhole



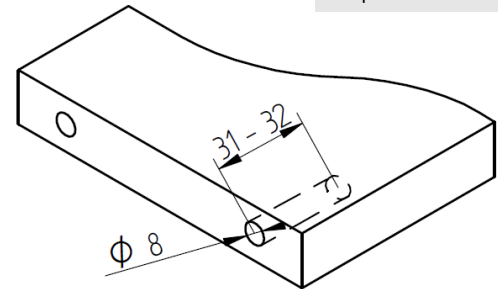
1. Metal stud for drillhole

Diameter: 8 mm
Deep: 8 / 26 mm

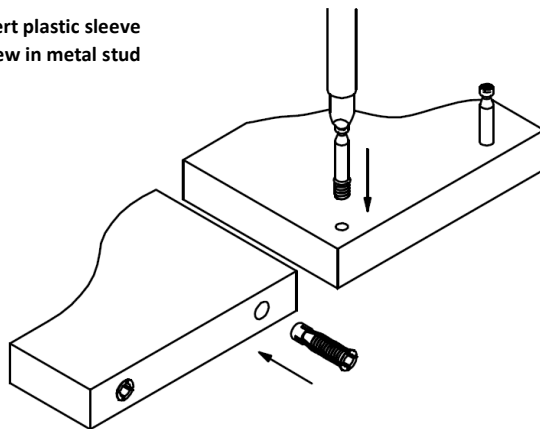


2. Drilling for plastic sleeve

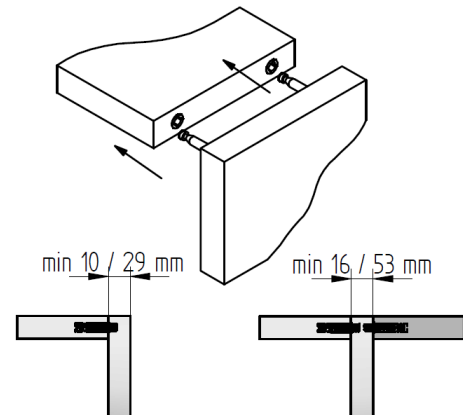
Diameter: 8 mm
Deep: 31-32 mm



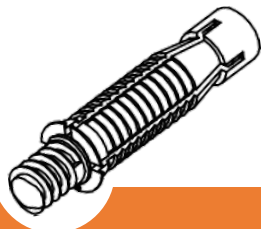
3. Insert plastic sleeve Screw in metal stud



4. Assemble



This drawing is the exclusive property of Knapp GmbH.



NOTICE DE MONTAGE

KNAPP®
connectors.com

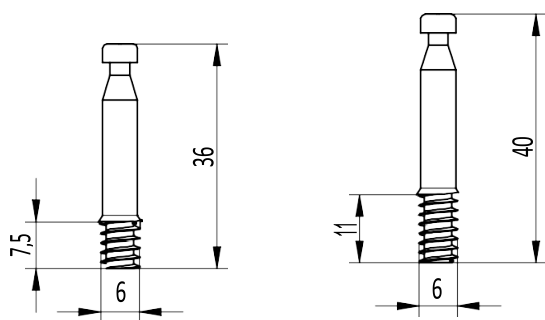
Assembleur pour corps de meuble

Valeurs en mm (millimètres)

QUICK-SET 5 mm

DESCRIPTION

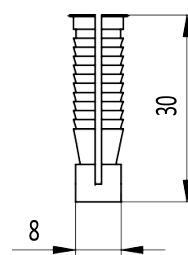
Goujon acier à visser



Réf. 5058

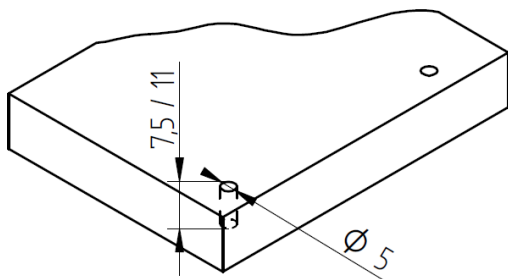
Réf. 5056

Cheville plastique



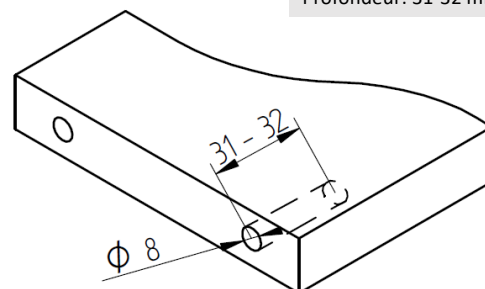
1. Perçage du goujon

Diamètre : 5 mm
Profondeur: 7,5/11 mm

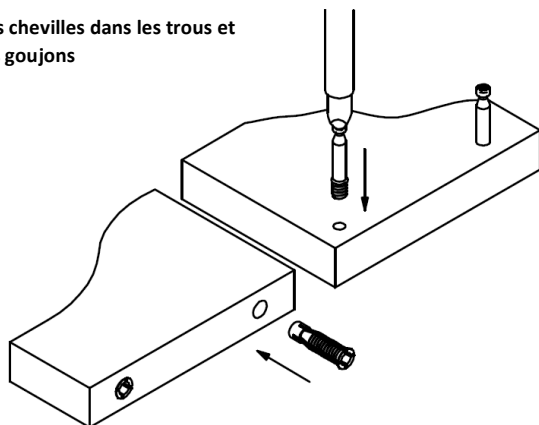


2. Perçage de la cheville

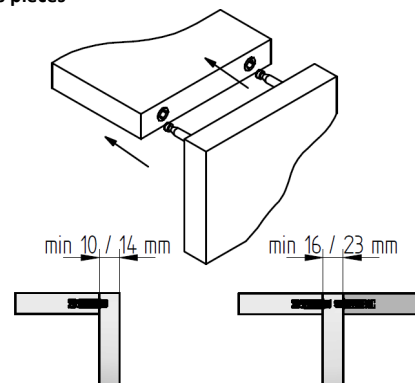
Diamètre : 8 mm
Profondeur: 31-32 mm



3. Placer les chevilles dans les trous et visser les goujons



4. Assembler les pièces



Ces dessins sont la propriété de Knapp GmbH.



NOTICE DE MONTAGE

KNAPP®
connectors.com

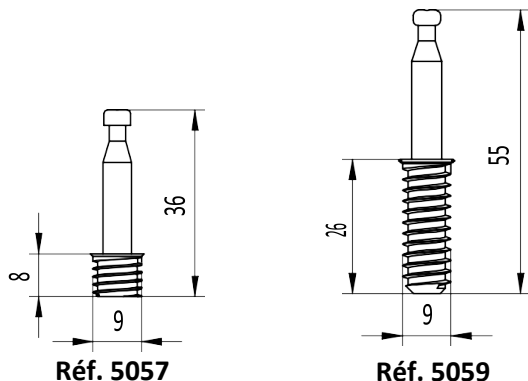
Assembleur pour corps de meuble

Valeurs en mm (millimètres)

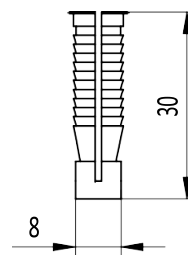
QUICK-SET 8 mm

DESCRIPTION

Goujon acier à visser

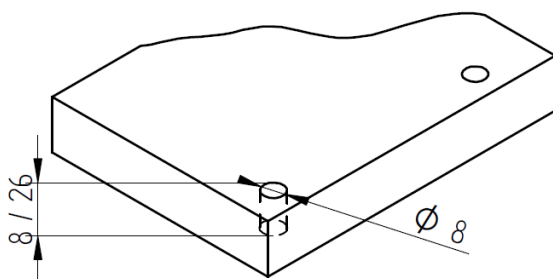


Cheville plastique



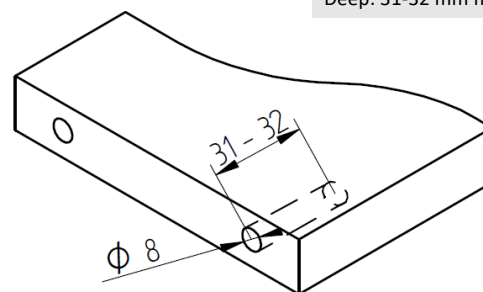
1. Perçage du goujon

Diameter: 8 mm
Deep: 8 / 26 mm

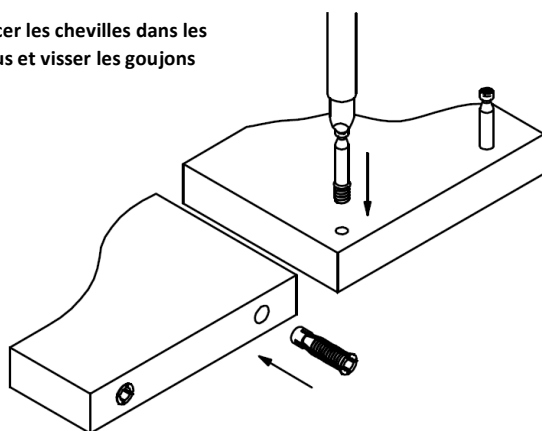


2. Perçage de la cheville

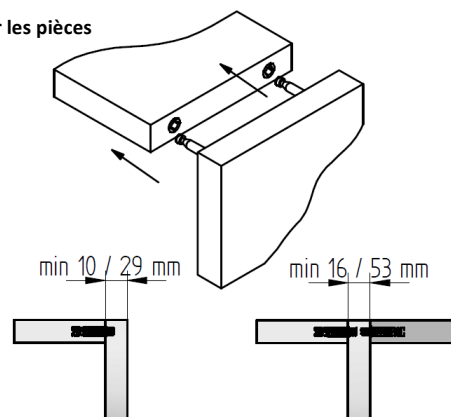
Diameter: 8 mm
Deep: 31-32 mm mm



3. Placer les chevilles dans les trous et visser les goujons



4. Assembler les pièces



Ces dessins sont la propriété de Knapp GmbH.