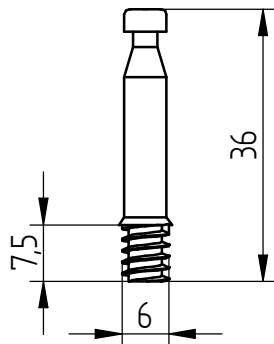


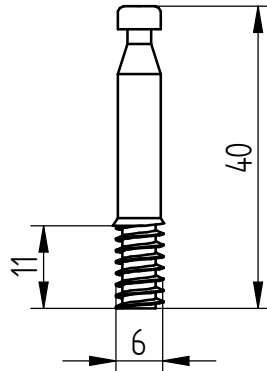
# Montageanleitung QUICK-SET 5mm

Korpusverbinder

Bezeichnung:  
SCHRAUBBOLZEN

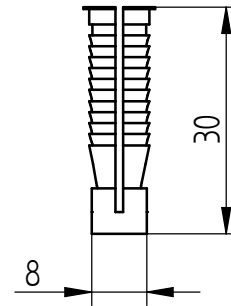


Art.-Nr. 5058



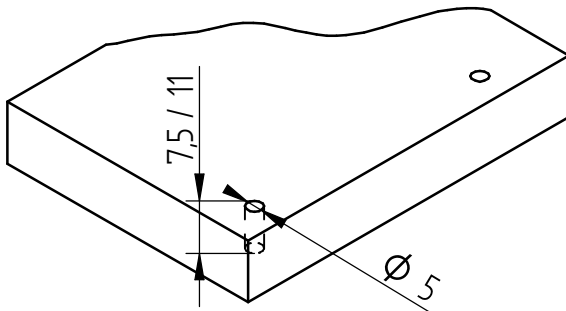
Art.-Nr. 5056

KUNSTSTOFFDÜBEL



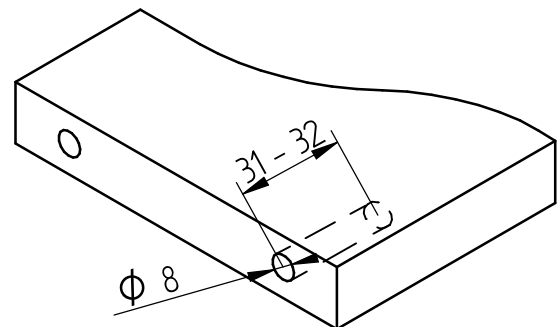
## 1. Bohren der Schraubbolzen

Durchmesser: 5 mm  
Tiefe: 7,5 / 11 mm

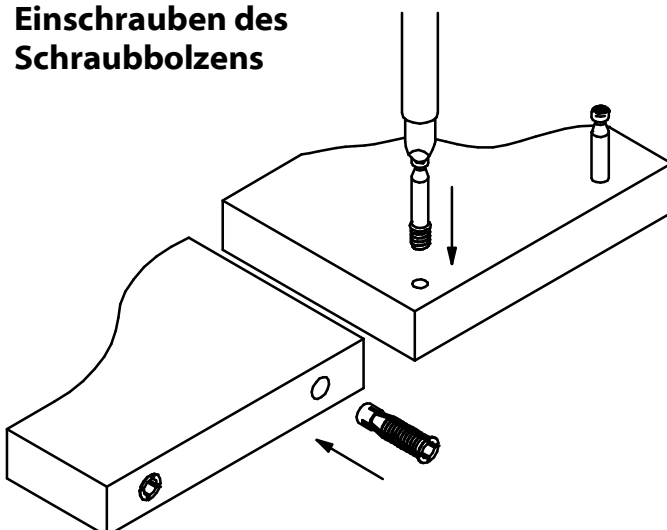


## 2. Bohren des Kunststoffdübels

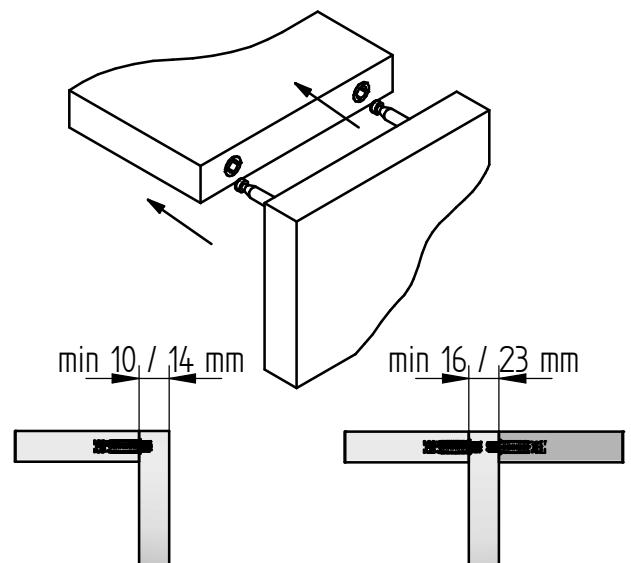
Durchmesser: 8 mm  
Tiefe: 31-32 mm



## 3. Einsetzen des Kunststoffdübels und Einschrauben des Schraubbolzens

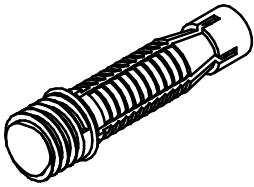


## 4. Zusammensetzen der Teile



Diese Zeichnung ist Eigentum der Knapp GmbH.

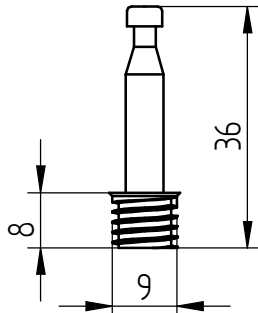
© Knapp GmbH. Alle Maße in mm - Irrtümer, Druckfehler und Änderungen vorbehalten. VERSION 05 28.06.2018



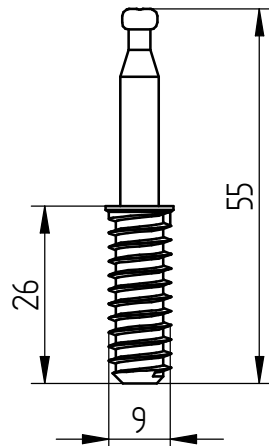
# Montageanleitung QUICK-SET 8mm

Korpusverbinder

Bezeichnung:  
SCHRAUBBOLZEN

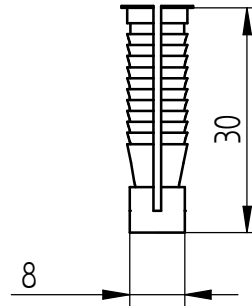


Art.-Nr. 5057



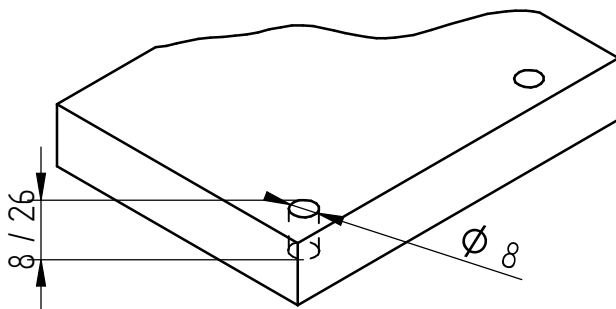
Art.-Nr. 5059

KUNSTSTOFFDÜBEL



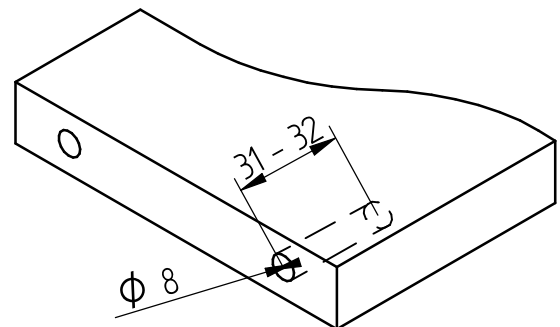
## 1. Bohren der Schraubbolzen

Durchmesser: 8 mm  
Tiefe: 8 / 26 mm

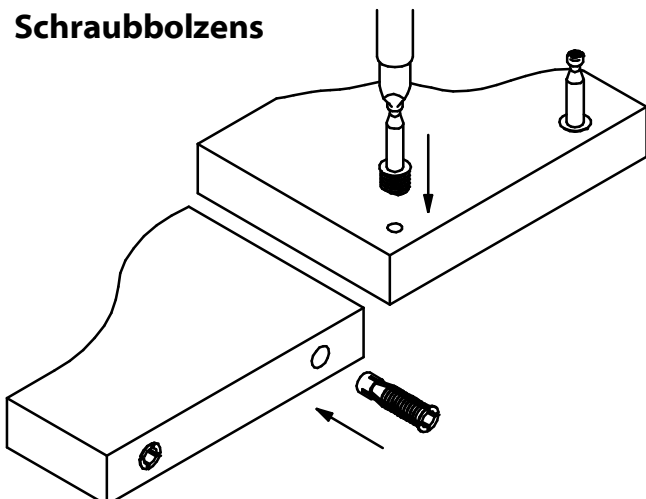


## 2. Bohren des Kunststoffdübels

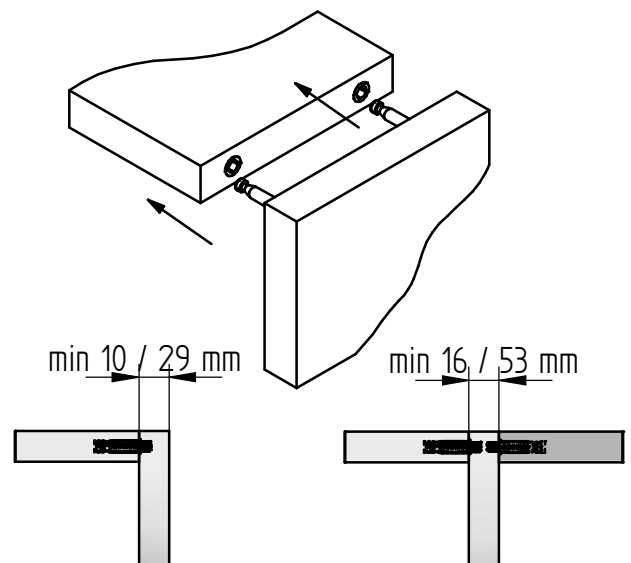
Durchmesser: 8 mm  
Tiefe: 31-32 mm



## 3. Einsetzen des Kunststoffdübels und Einschrauben des Schraubbolzens

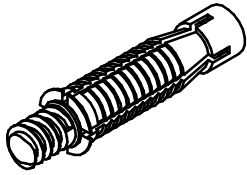


## 4. Zusammensetzen der Teile



Diese Zeichnung ist Eigentum der Knapp GmbH.

© Knapp GmbH. - Alle Maße in mm - Irrtümer, Druckfehler und Änderungen vorbehalten. VERSION 05 28.06.2018



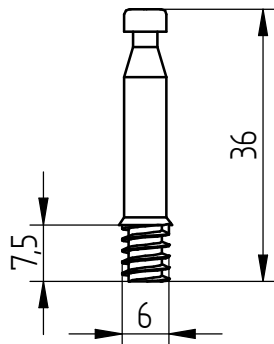
# Construction Manual

# QUICK-SET 5mm

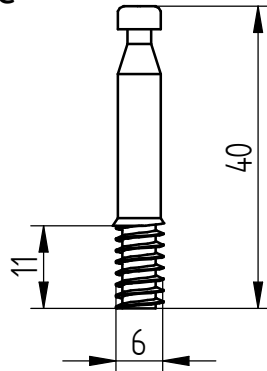
Cabinet connector

## Title:

Anchorbolt for drillhole

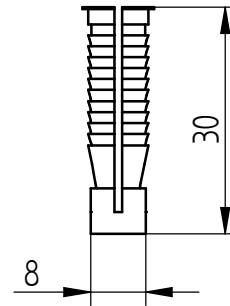


**Art.-No. 5058**



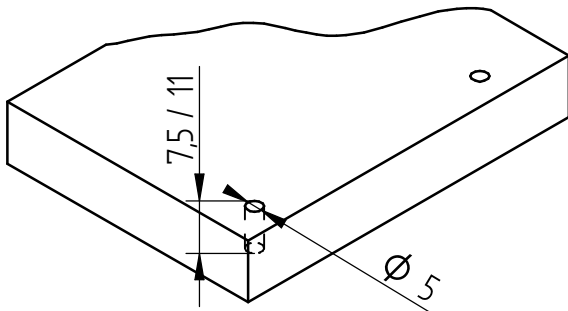
**Art.-No. 5056**

Plastic dowel for drillhole



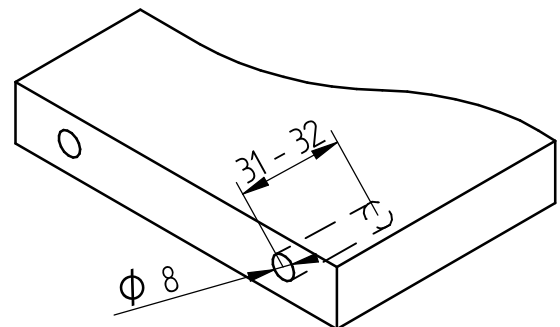
### 1. Drilling for anchorbolt

Diameter: 5 mm  
Deep: 7,5 / 11 mm

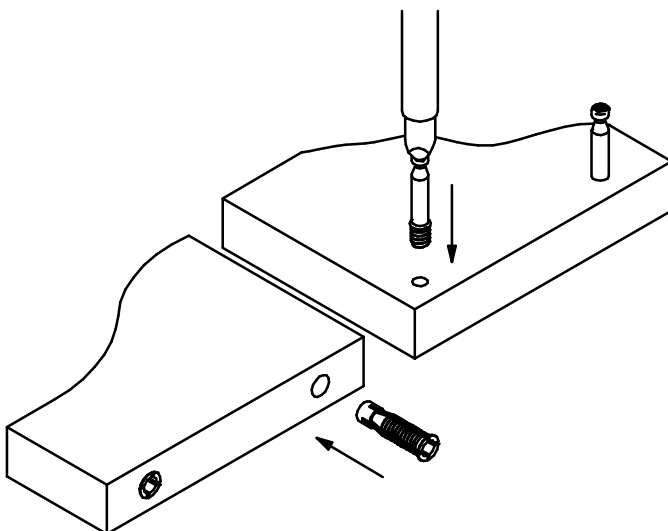


### 2. Drilling for plastic dowel

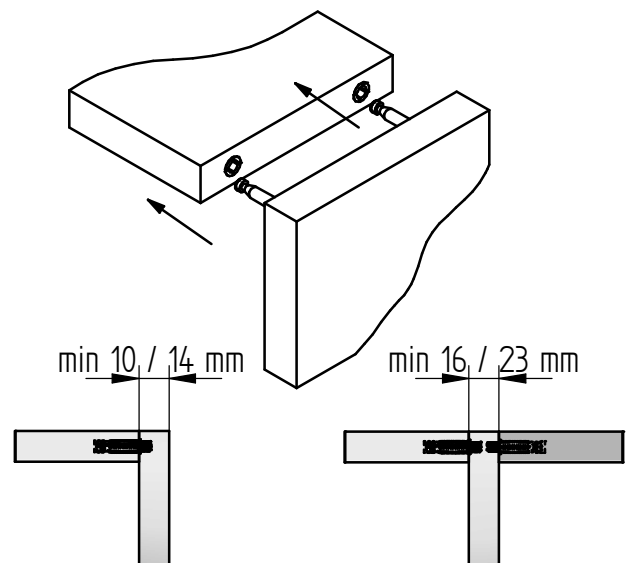
Diameter: 8 mm  
Deep: 31-32 mm



### 3. Knock in plastic dowel Screwing anchorbolt

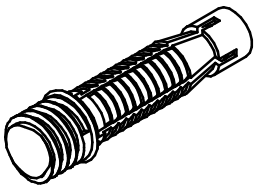


### 4. Assemble



This drawing is the exclusive property of Knapp GmbH.

© Knapp GmbH. All measures in mm - Errors excepted. VERSION 05 28.06.2018



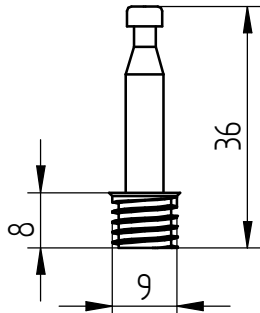
# Construction Manual

# QUICK-SET 8mm

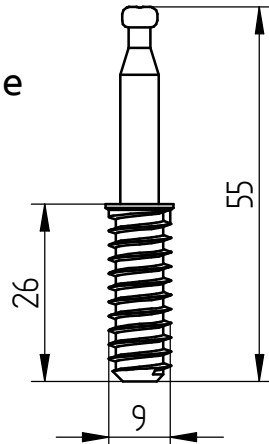
Cabinet connector

**Title:**

**Anchorbolt for drillhole**

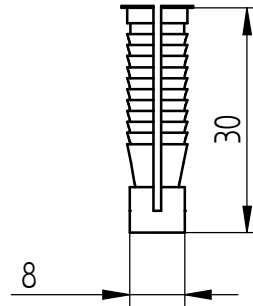


**Art.-No. 5057**



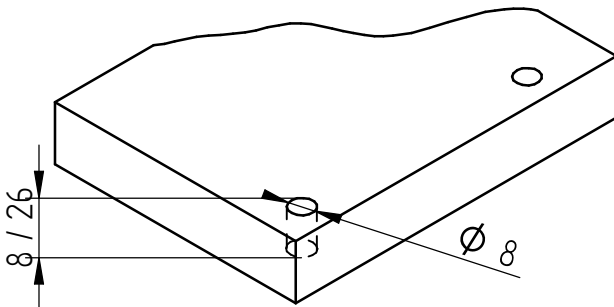
**Art.-No. 5059**

**Plastic dowel for drillhole**



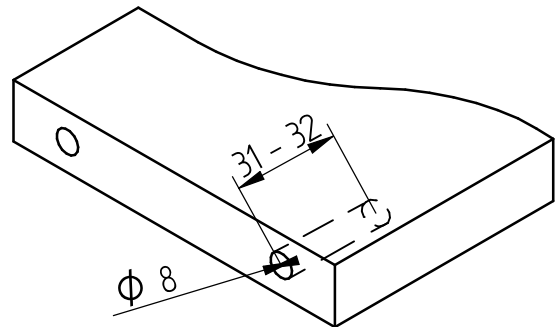
**1. Drilling for anchorbolt**

Diameter: 8mm  
Deep: 8 / 26 mm

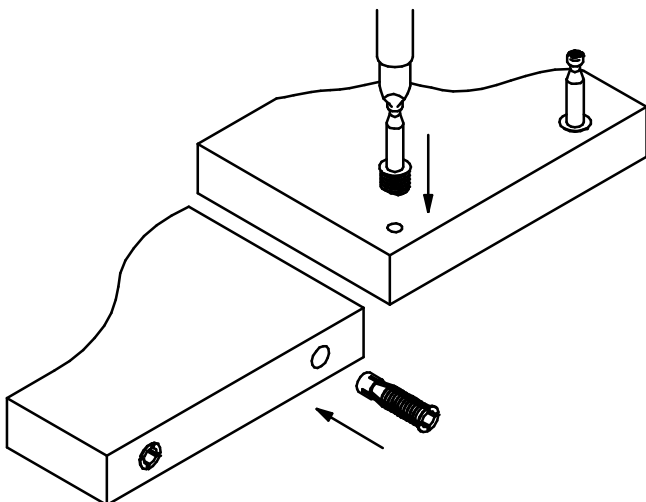


**2. Drilling for plastic dowel**

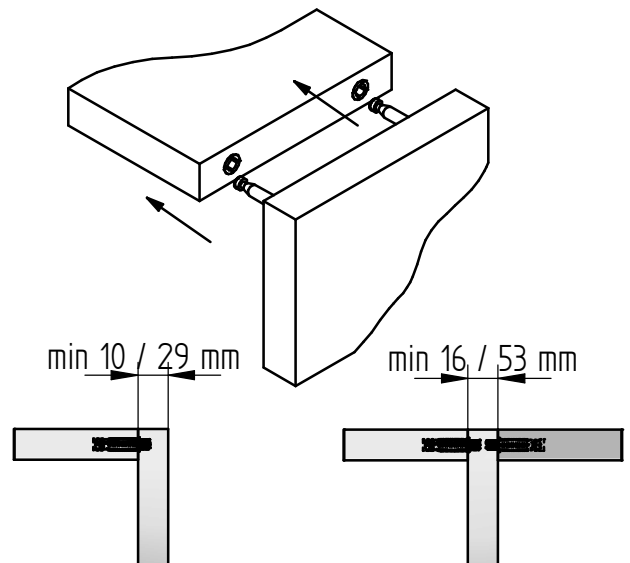
Diameter: 8mm  
Deep: 31-32 mm



**3. Knock in plastic dowel  
Screwing anchorbolt**



**4. Assemble**

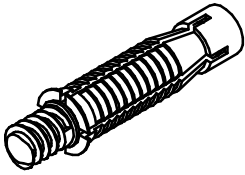


This drawing is the exclusive property of Knapp GmbH.

© Knapp GmbH. All measures in mm - Errors excepted. VERSION 05 28.06.2018

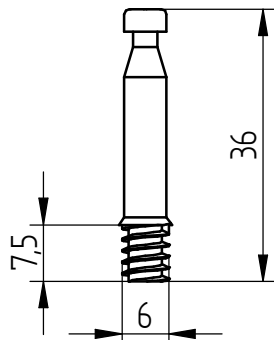
# QUICK-SET 5mm

Assembleur pour caisson

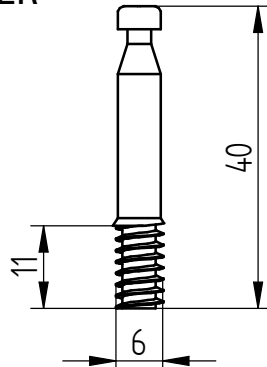


## Description

GOUJON ACIER A VISSER

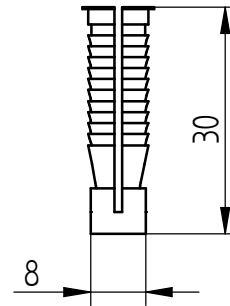


Réf. 5058



Réf. 5056

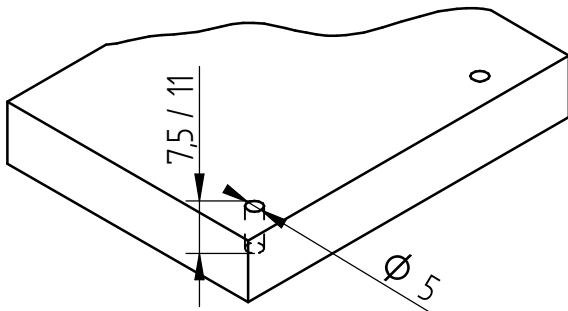
CHEVILLE PLASTIQUE



### 1. Perçage du goujon

Diamètre : 5mm

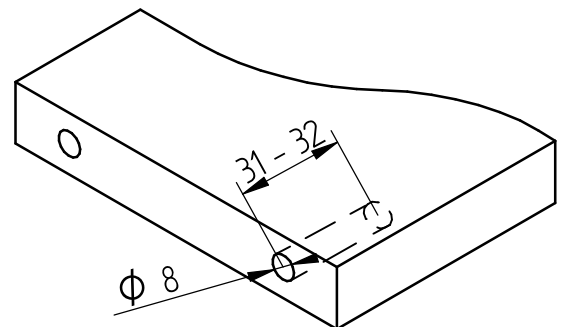
Profondeur : 7,5 / 11 mm



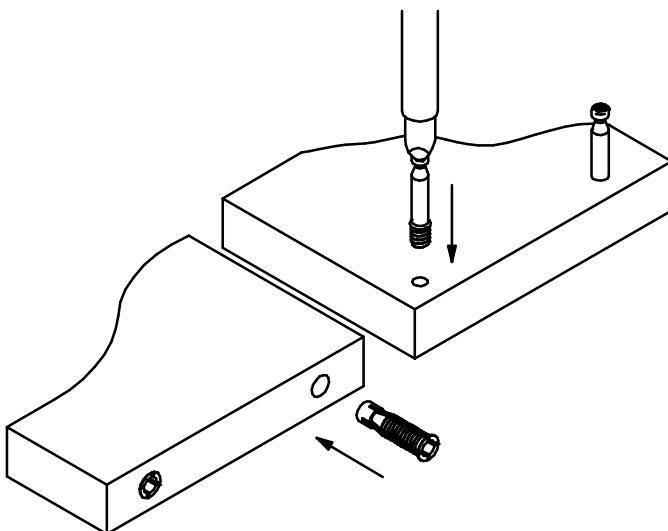
### 2. Perçage de la cheville

Diamètre : 8 mm

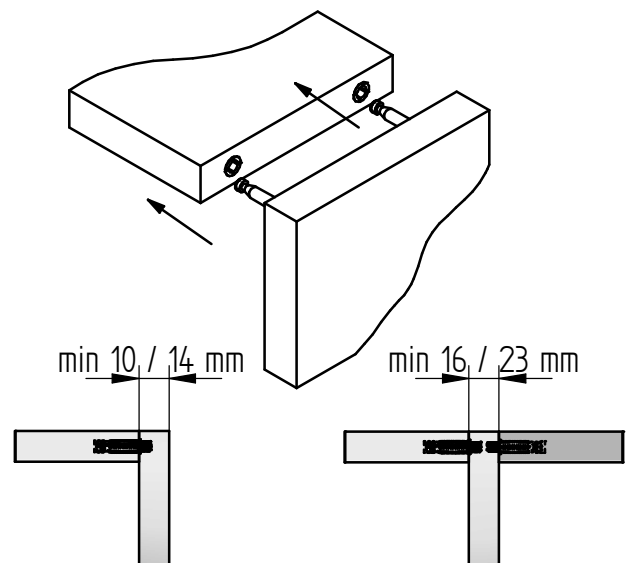
Profondeur : 31-32 mm

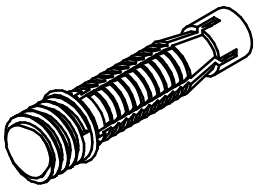


### 3. Placer les chevilles dans les trous et visser les goujons



### 4. Assembler les pièces



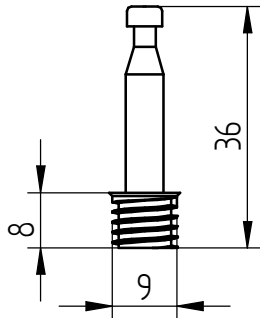


# QUICK-SET 8mm

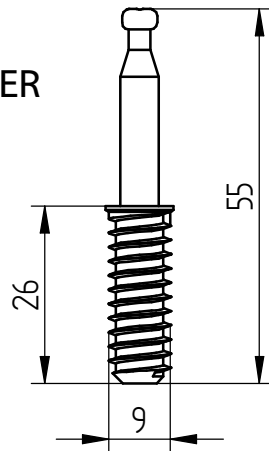
## Assembleur pour caisson

### Description

**GOUJON ACIER A VISSER**

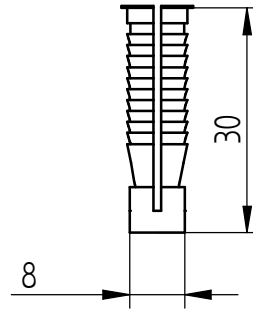


**Réf. 5057**



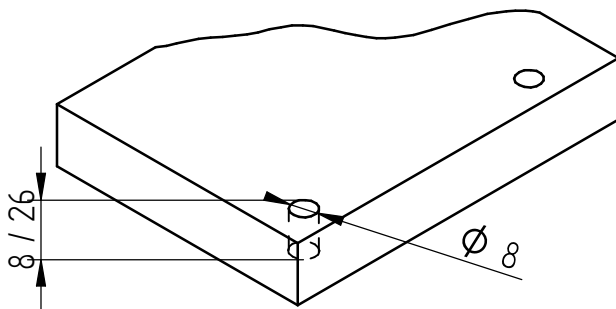
**Réf. 5059**

**CHEVILLE PLASTIQUE**



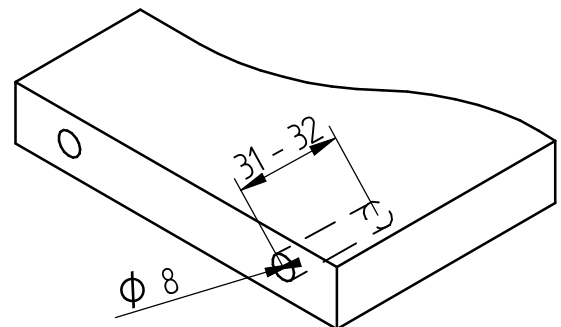
### 1. Perçage du goujon

Diamètre : 8 mm  
Profondeur : 8 / 26 mm

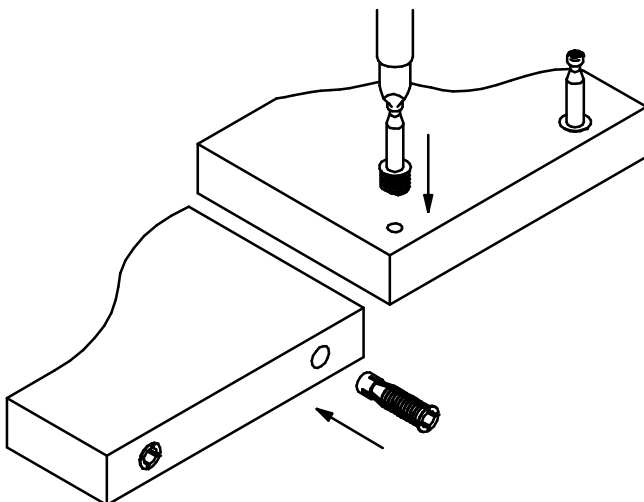


### 2. Perçage de la cheville

Diamètre : 8 mm  
Profondeur : 31-32 mm



### 3. Placer les chevilles dans les trous et visser les goujons



### 4. Assembler les pièces

