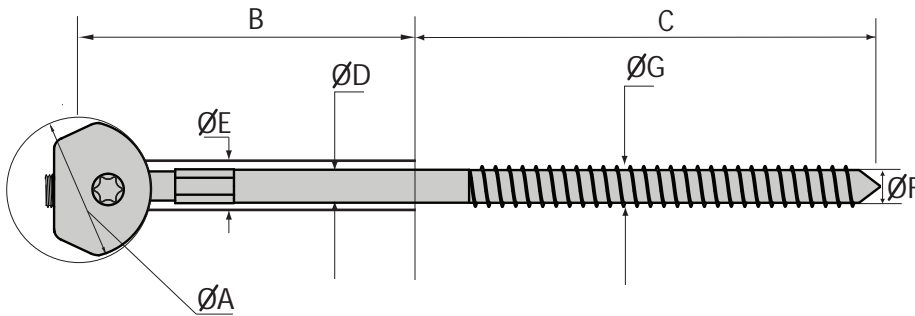
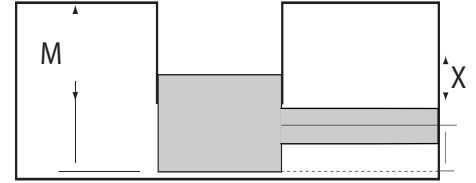


Super UT 14.100 Post Fastener (12mmx278mm)

SPECIFICATION



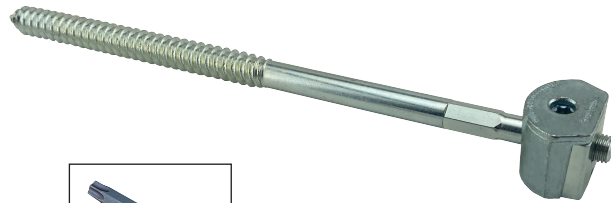
SHAFT CENTRE CALCULATION



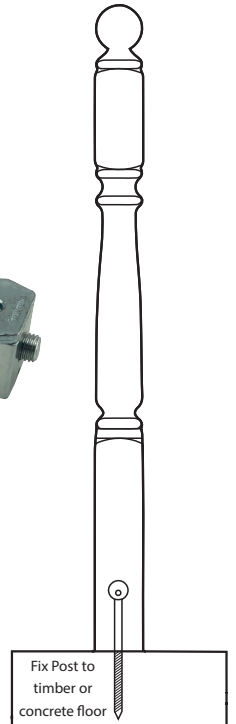
M = Minimum Bore Depth 28mm (1 7/64 inches)
X = Shaft Centre 14mm (9/16 inches)

Measurements

	Millimitres	Inches
A	35	1 ³ / ₈
B	125	4 ²⁹ / ₃₂
C	143	5 ⁴¹ / ₆₄
D	11	7/ ₁₆
E	13	+/- 33/ ₆₄
F	+/- 10	13/ ₃₂
G	13.5	17/ ₃₂

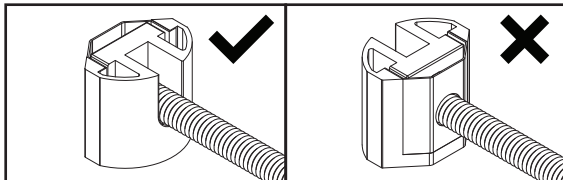


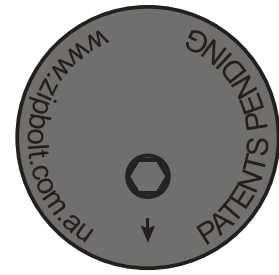
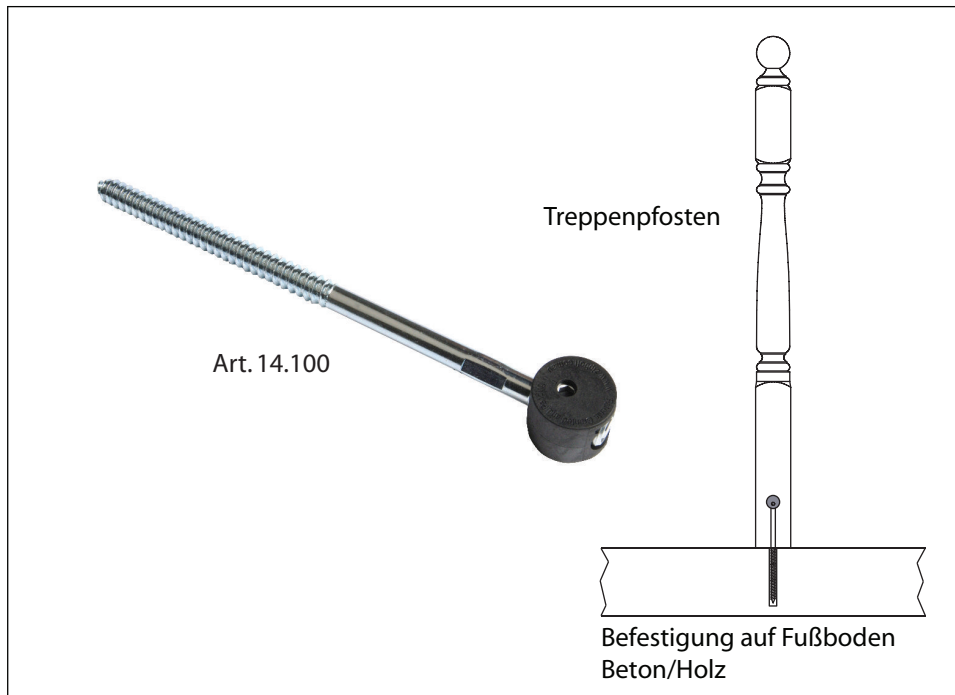
T40 Torx Bit



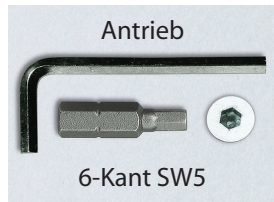
Fix Post to timber or concrete floor

Use a chemical anchor to secure into concrete, the hole must be slightly larger than the screw shaft.





Maßstab 1:1
Ø 13.5 x 275 mm



max. 10 Nm

