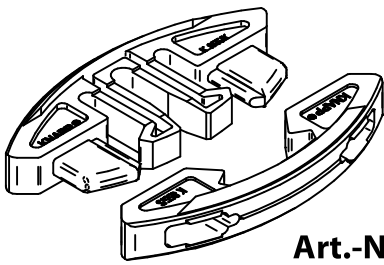


Art.-Nr.

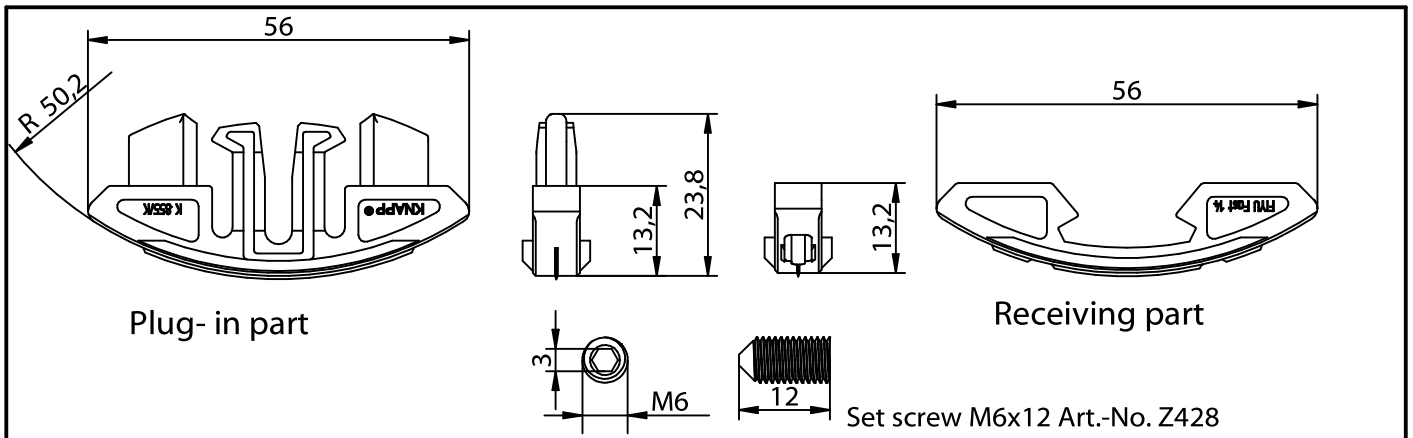
# Instruction Manual

## FIYU FAST 14

Plug-in connector

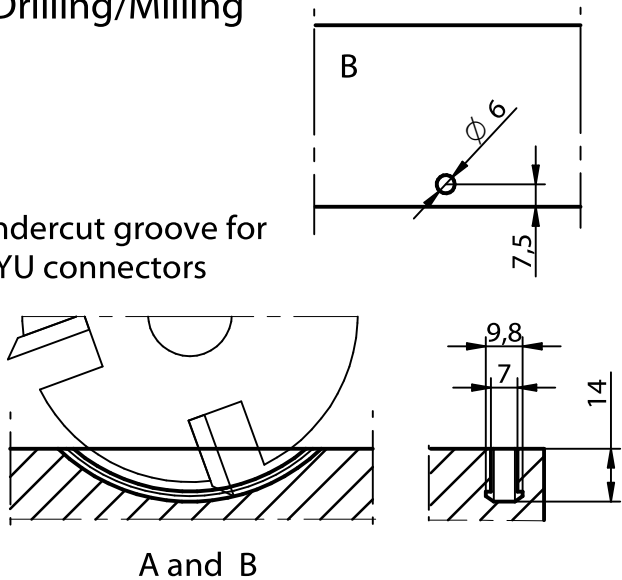


Art.-No. K855

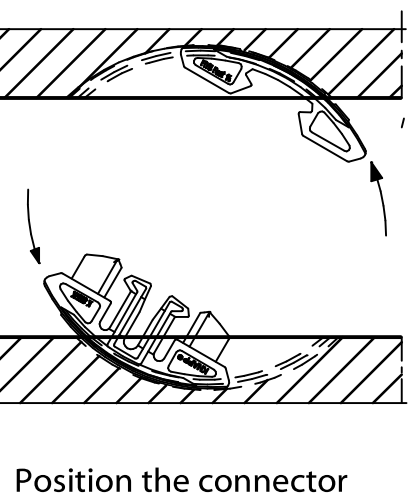


### 1. Drilling/Milling

Undercut groove for FIYU connectors



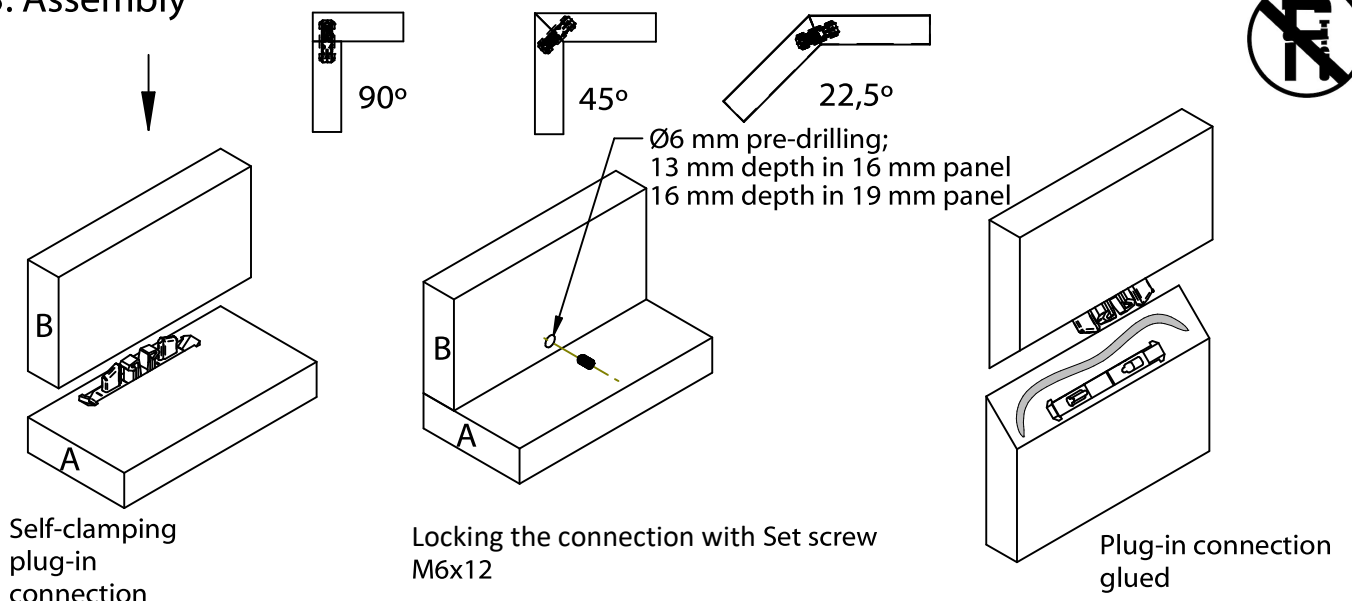
### 2. Positioning



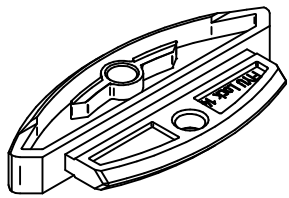
### 3. Assembly



This drawing is the exclusive property of Knapp GmbH.



© Knapp GmbH. All measures in mm - Errors excepted. VERSION 03 09.10.2023

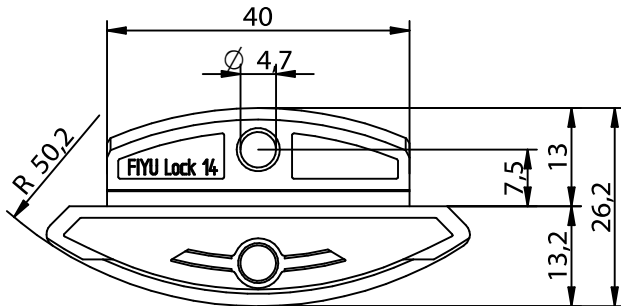


# FIYU LOCK 14 plug-in part

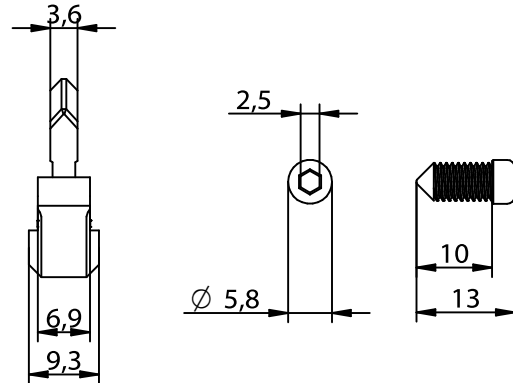
Art.-No. K856/S

Plug-in connector

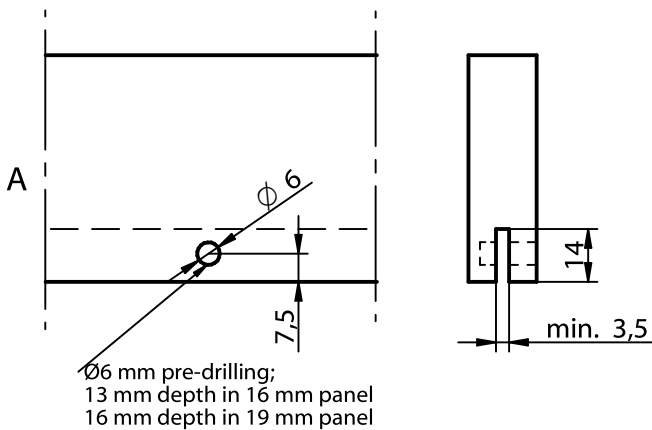
## FIYU LOCK 14 - plug-in connector



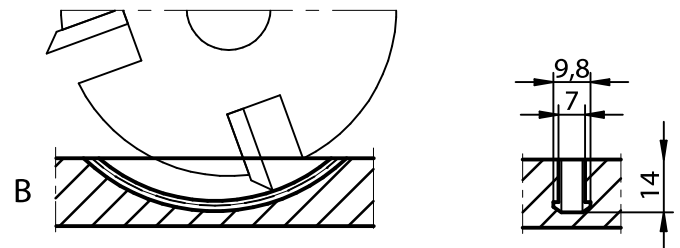
Tensioning screw M5x13  
Art.-Nr. K857



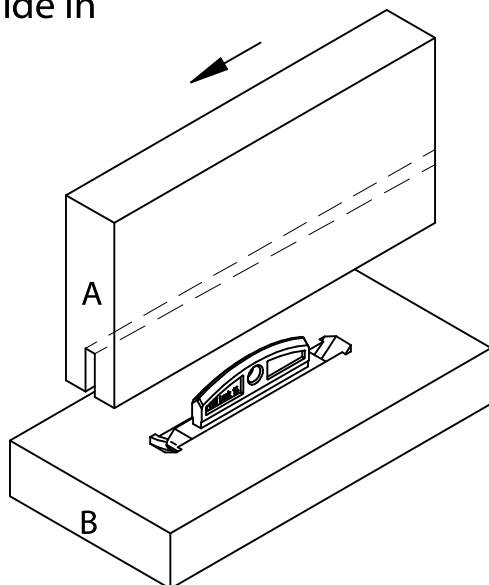
### 1. Drilling/Milling



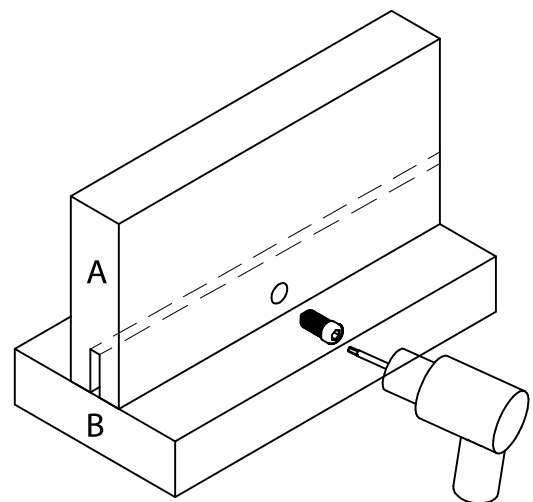
### 2. Milling

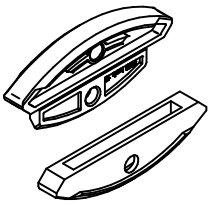


### 3. Slide in



### 4. Fasten together





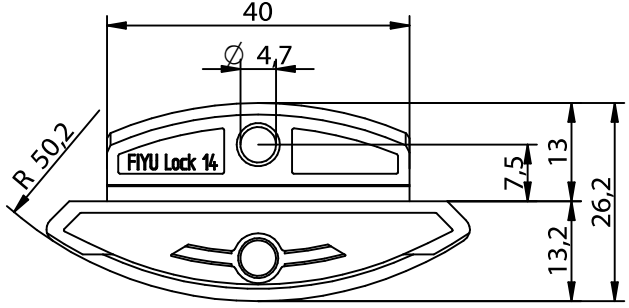
# Instruction Manual

## FIYU LOCK 14

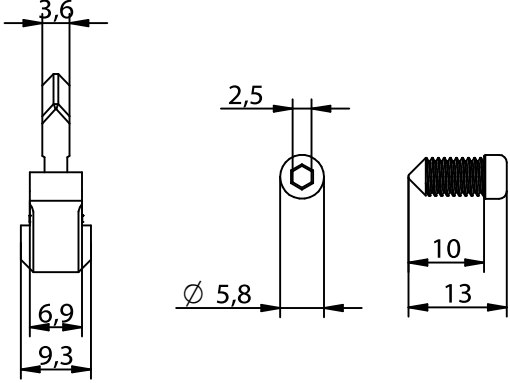
Art.-No. K859

Plug-in connector

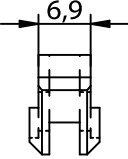
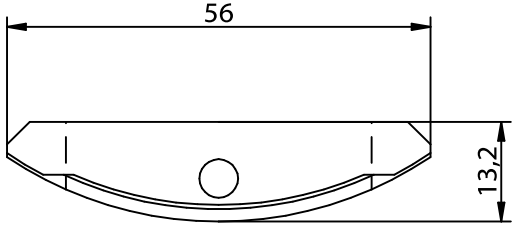
### FIYU LOCK 14 - plug-in part



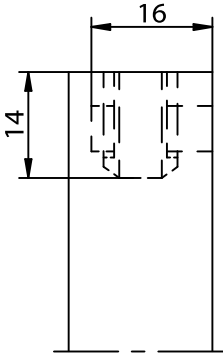
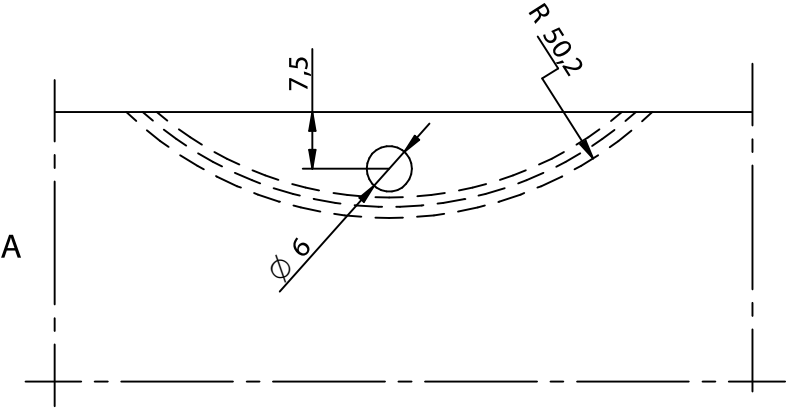
tensioning screw M5x13 mm  
Art.-No. K857



### FIYU LOCK 14 - receiving part

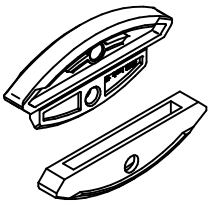


### 1. Drilling/Milling



This drawing is the exclusive property of Knapp GmbH.

© Knapp GmbH. All measures in mm - Errors excepted. VERSION 03 09.10.2023



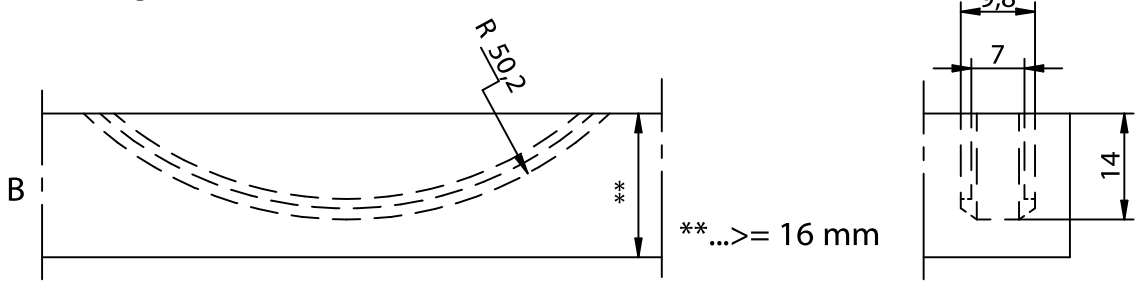
# Instruction Manual

## FIYU LOCK 14

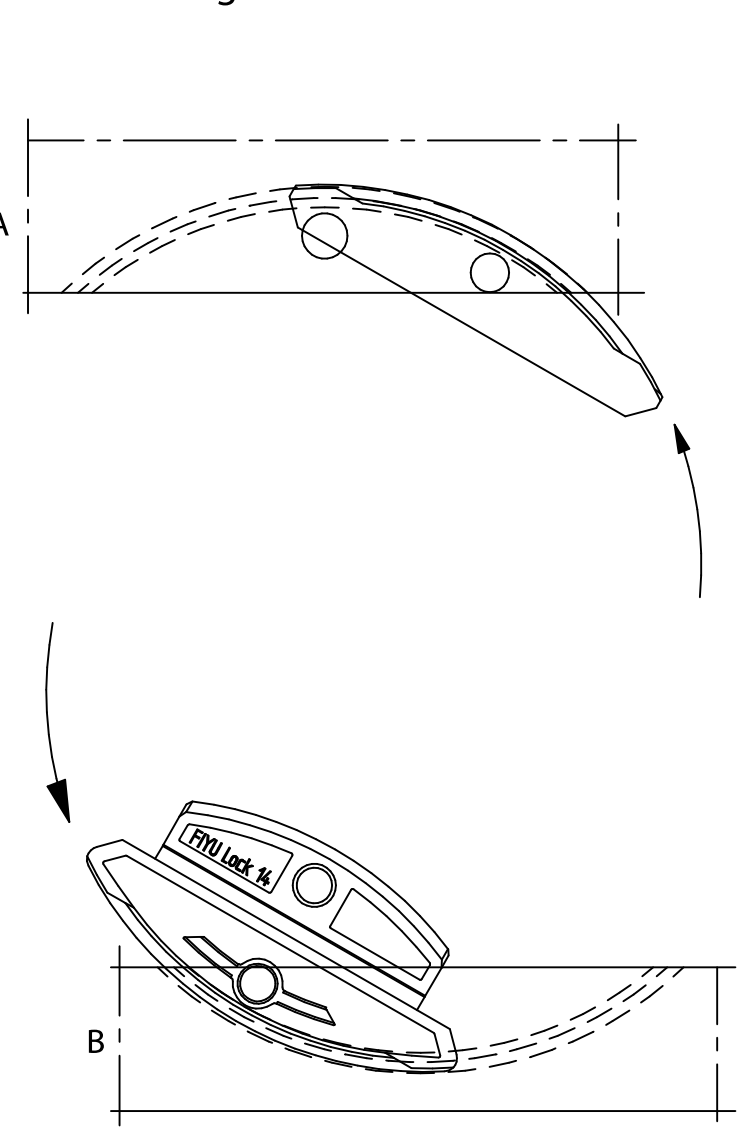
Art.-No. K859

Plug-in connector

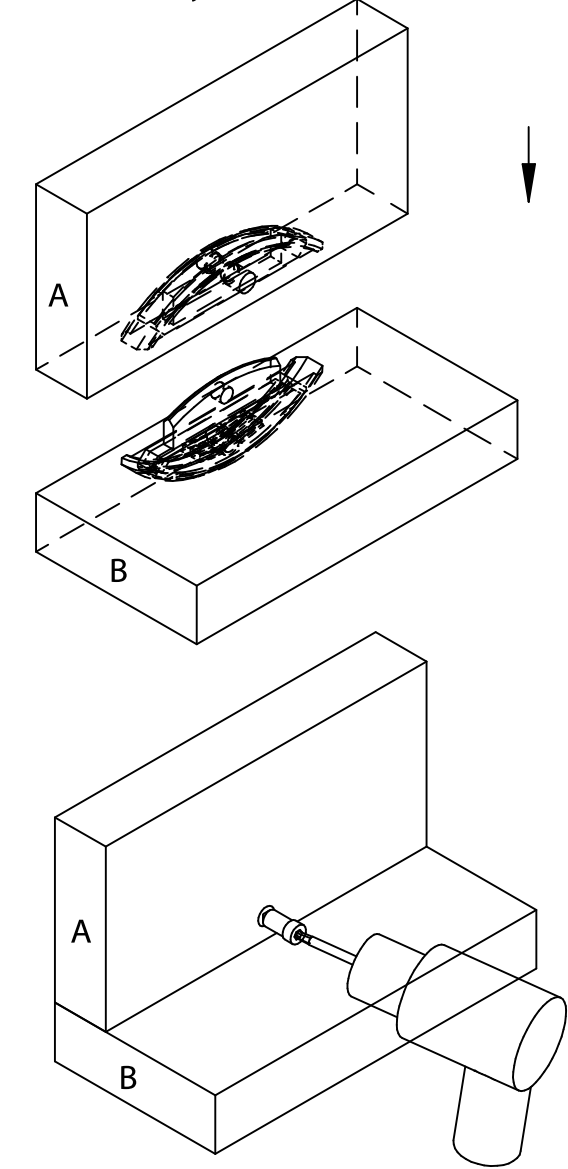
### 2. Milling



### 3. Positioning



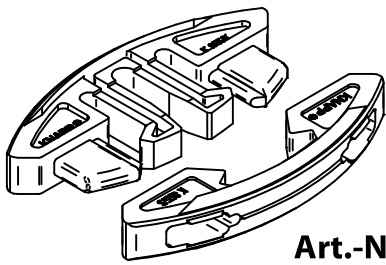
### 4. Assembly



Locking the connection with tensioning screw M5x13

This drawing is the exclusive property of Knapp GmbH.

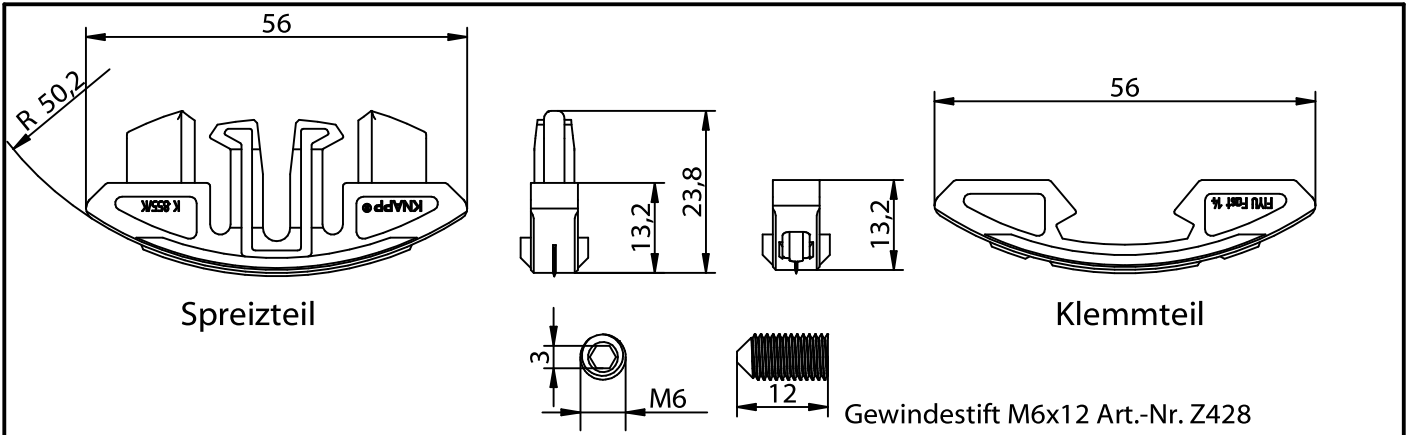
© Knapp GmbH. All measures in mm - Errors excepted. VERSION 03 09.10.2023



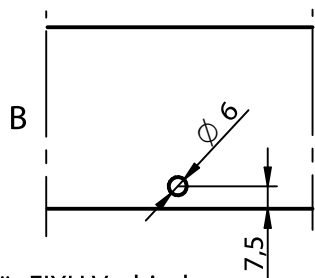
Art.-Nr. K855

# Montageanleitung FIYU FAST 14

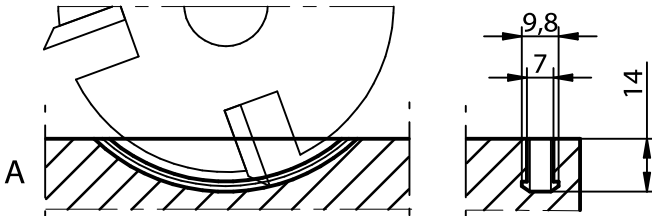
Steckverbinder



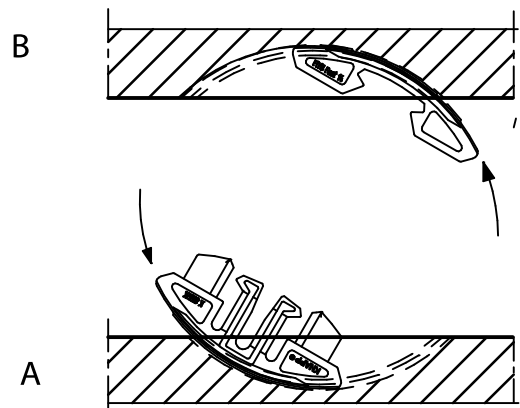
## 1. Bohren/Fräsen



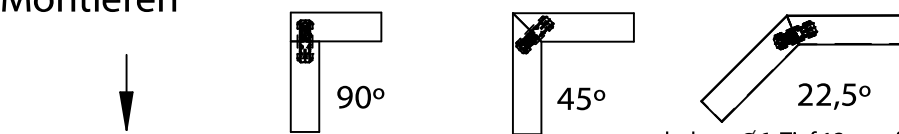
hinterschnittene Fräsnut für FIYU Verbinder



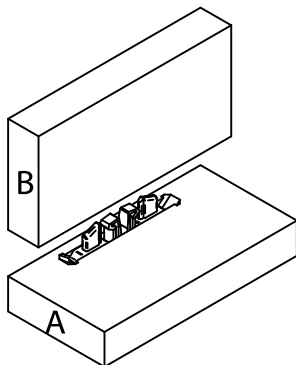
## 2. Positionieren



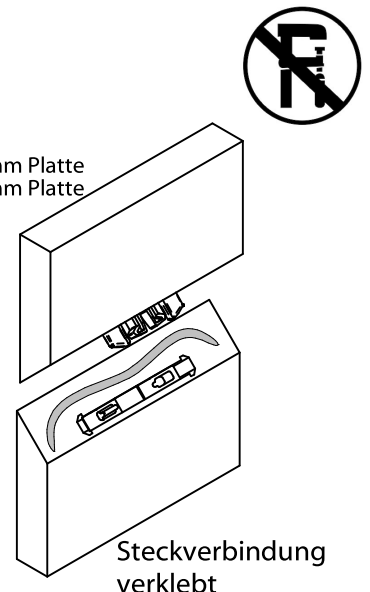
## 3. Montieren

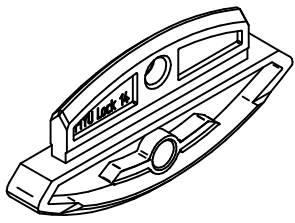


vorbohren  $\phi 6$ , Tief 13 mm für 16 mm Platte  
vorbohren  $\phi 6$ , Tief 16 mm für 19 mm Platte



selbstspannende Steckverbindung mit Gewindestift M6x12 verschrauben





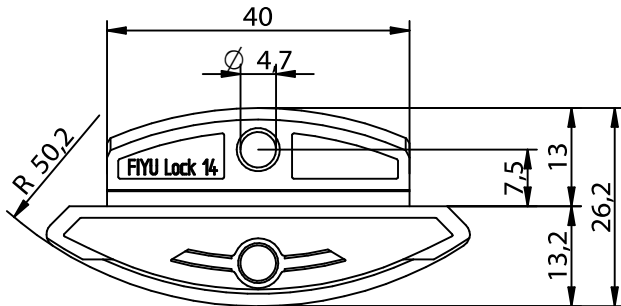
Art.-Nr. K856

Montageanleitung

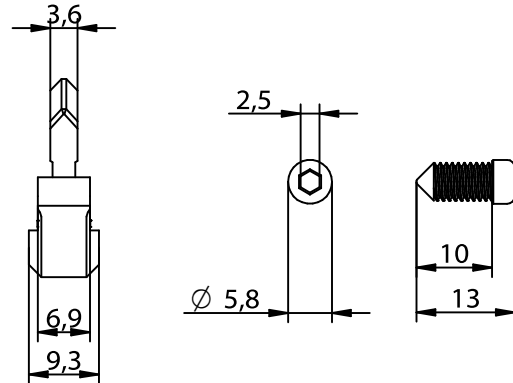
# FIYU LOCK 14 Federlamelle

Steckverbinder

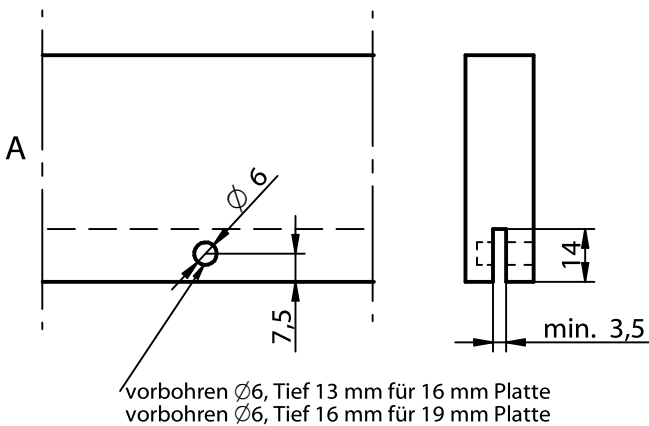
## FIYU LOCK 14 Federlamelle



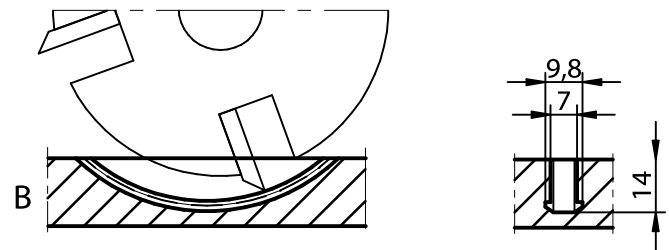
Spannschraube M5x13  
Art.-Nr. K857



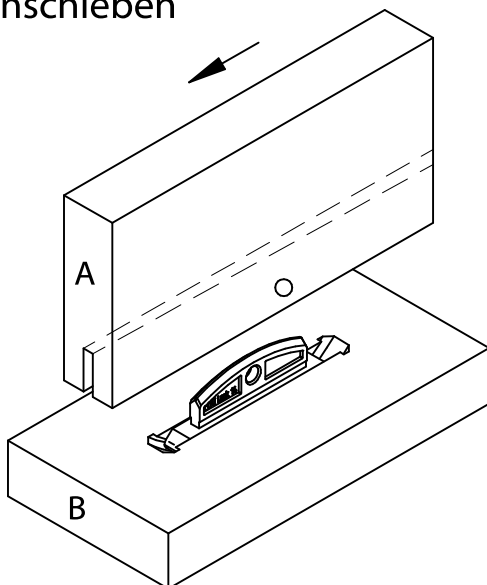
### 1. Bohren/Fräsen



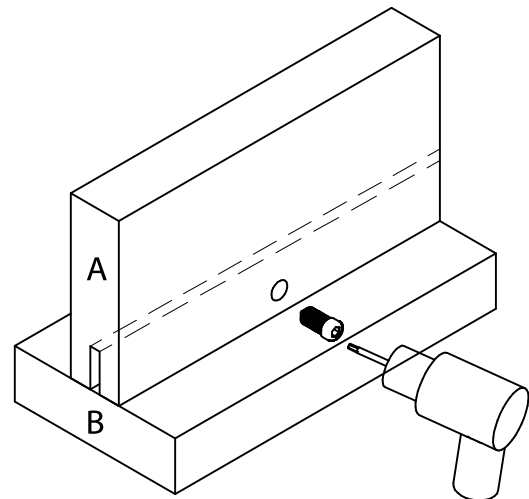
### 2. Fräsen



### 3. Einschieben

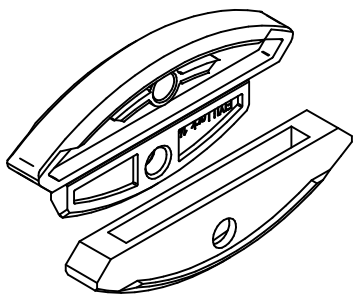


### 4. Verschrauben



Diese Zeichnung ist Eigentum der Knapp GmbH.

© Knapp GmbH. Alle Maße in mm - Irrtümer, Druckfehler und Änderungen vorbehalten. VERSION 03 09.10.2023



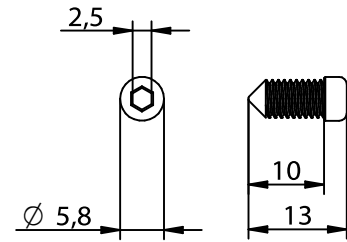
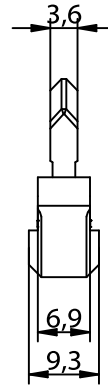
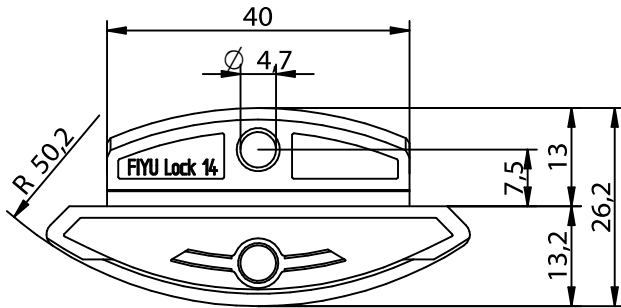
# Montageanleitung FIYU LOCK 14

Steckverbinder

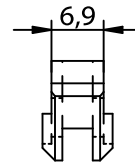
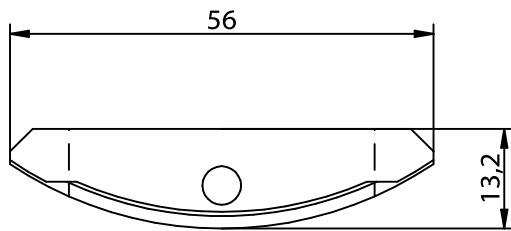
Art.-Nr. K859

## FIYU LOCK 14 - Federlamelle

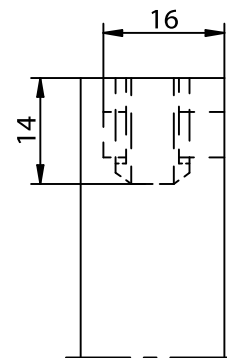
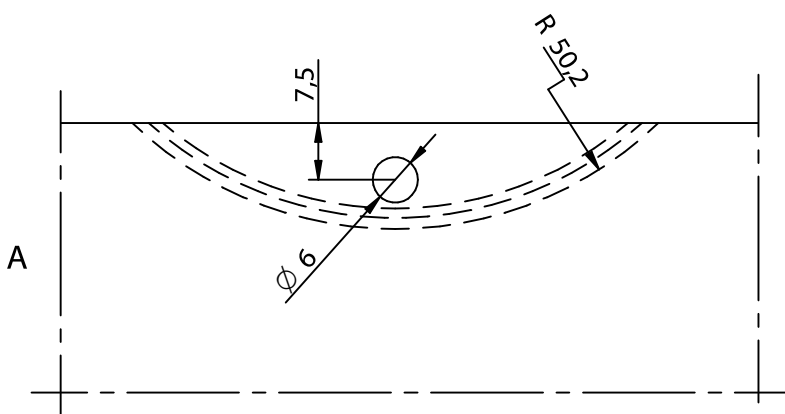
Spannschraube M5x13 mm  
Art.-Nr. K857



## FIYU LOCK 14 - Schlitzlamelle



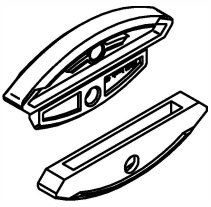
## 1. Bohren/Fräsen



Diese Zeichnung ist Eigentum der Knapp GmbH.

© Knapp GmbH. Alle Maße in mm - Irrtümer, Druckfehler und Änderungen vorbehalten. VERSION 03 09.10.2023



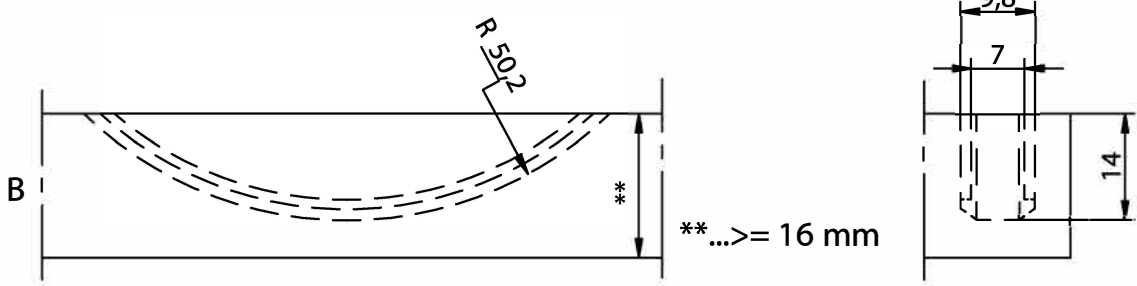


# Montageanleitung FIYU LOCK 14

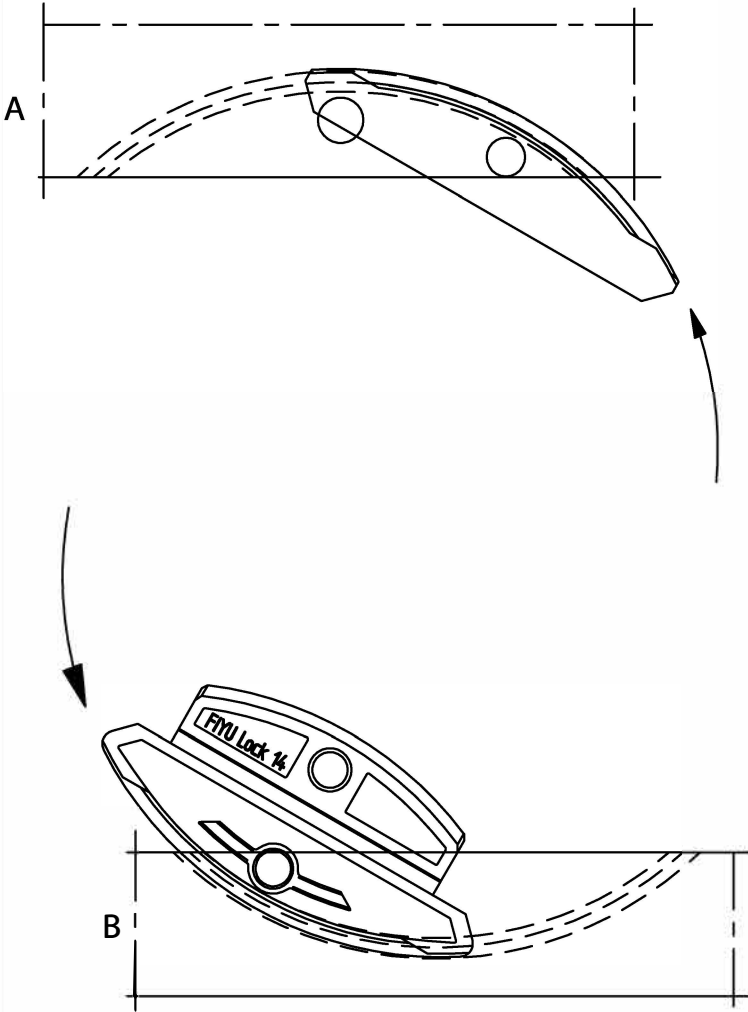
Art.-Nr. K859

Steckverbinder

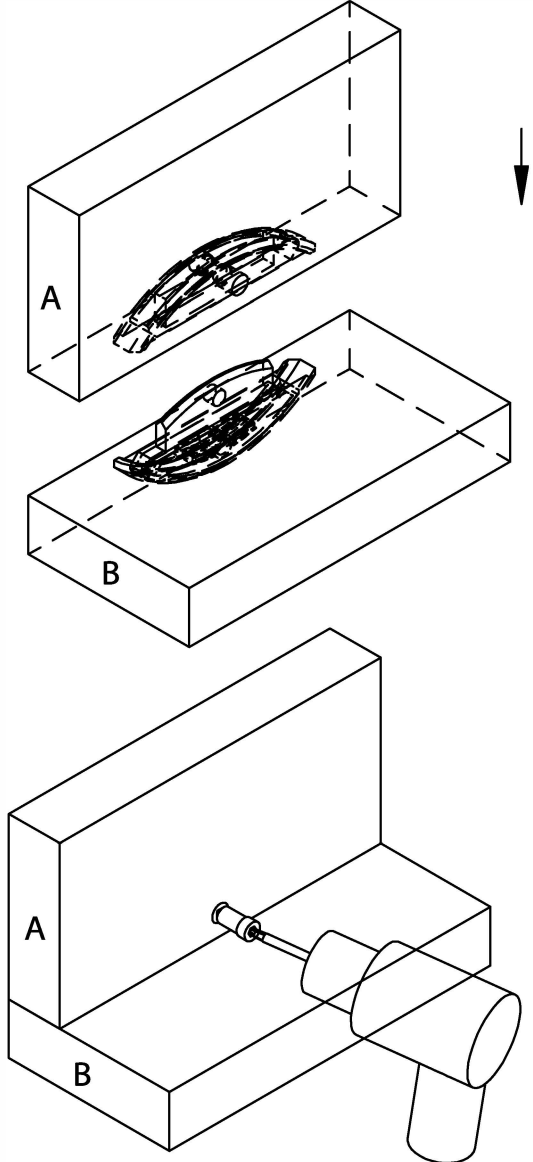
## 2. Fräsen



## 3. Verbinder Positionieren



## 4. Montieren



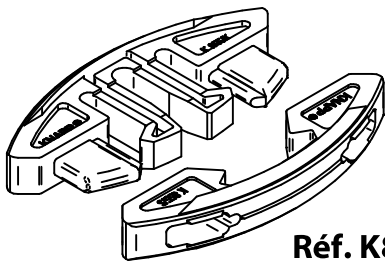
Steckverbindung mit Spannschraube M5x13

Diese Zeichnung ist Eigentum der Knapp GmbH.

© Knapp GmbH. Alle Maße in mm - Irrtümer, Druckfehler und Änderungen vorbehalten. VERSION 03 09.10.2023

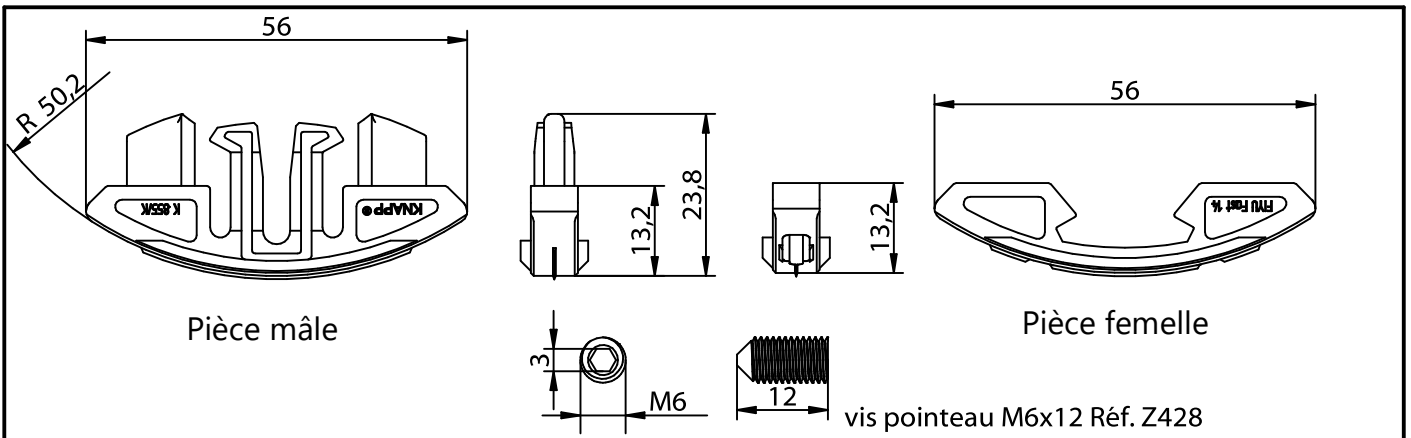
# Notice de montage

## FIYU FAST 14

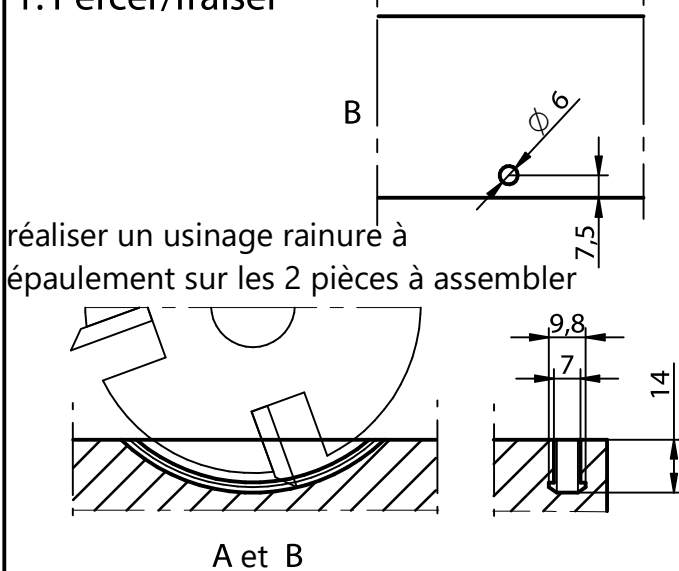


Réf. K855

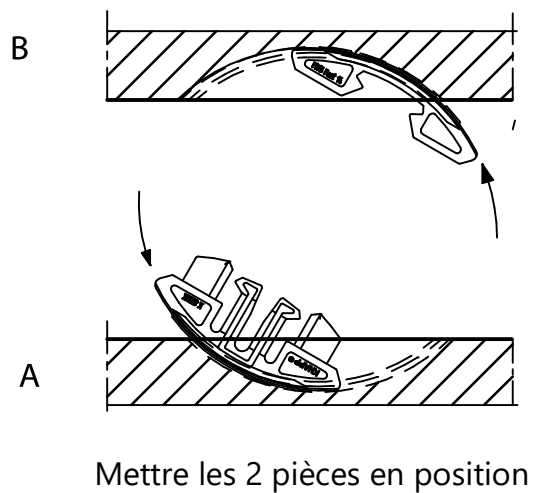
Assembleur corps de meuble



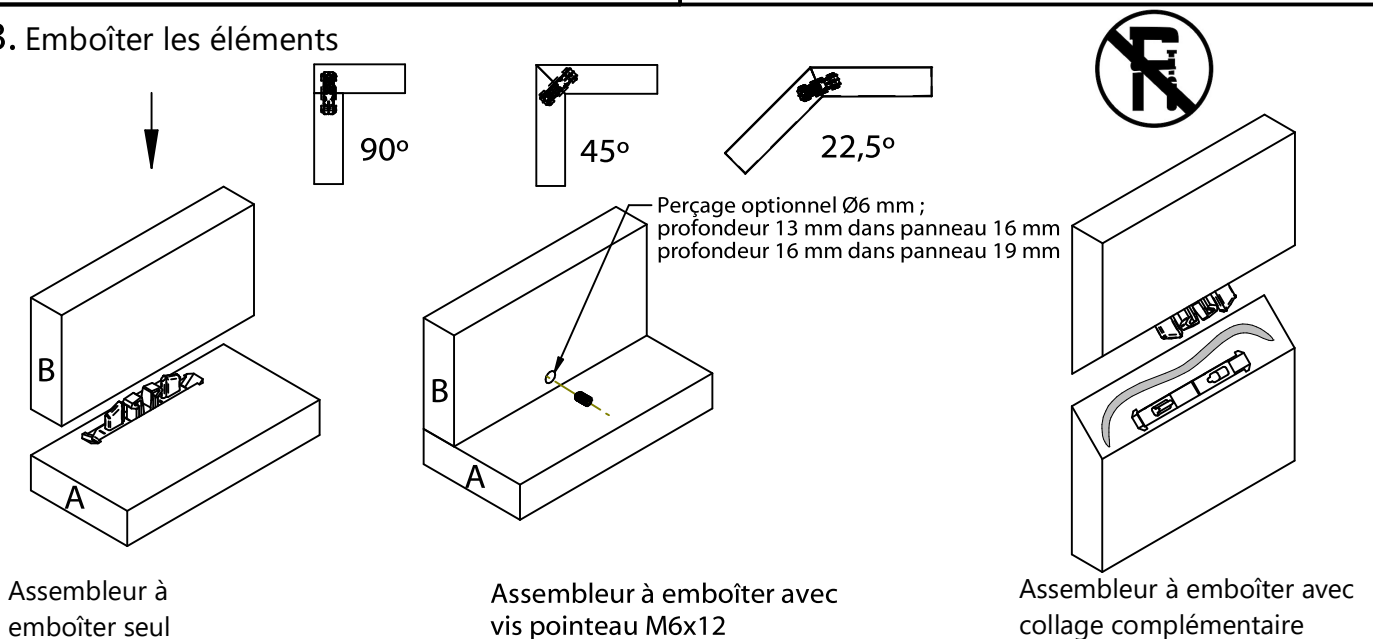
### 1. Percer/fraiser

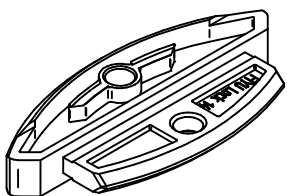


### 2. Insérer



### 3. Emboîter les éléments



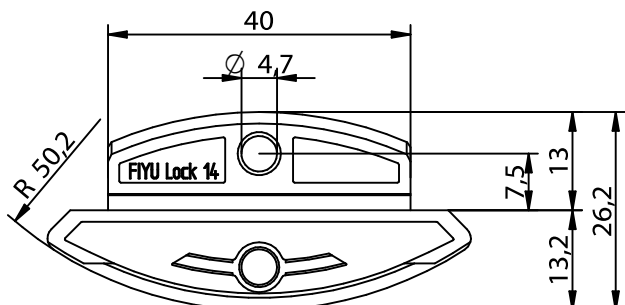


# FIYU LOCK 14 pièce mâle

Réf. K856/S

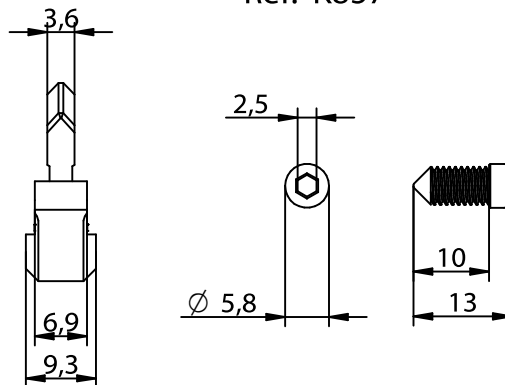
Assembleur corps de meuble

## FIYU LOCK 14

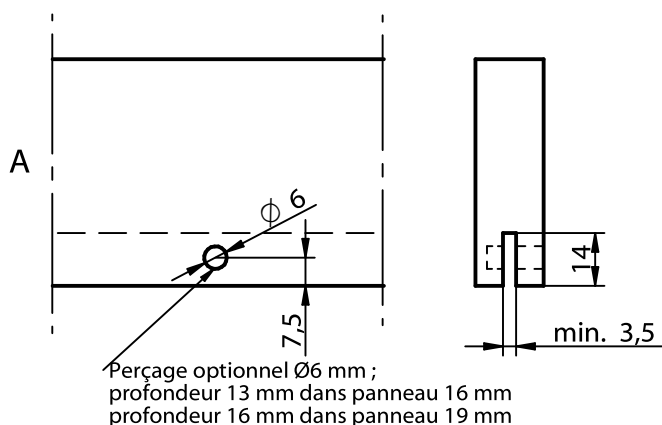


Vis pointeau M5x13mm

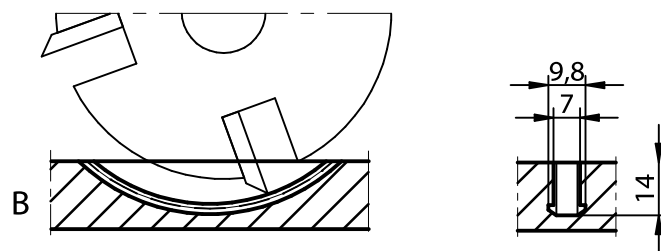
Réf. K857



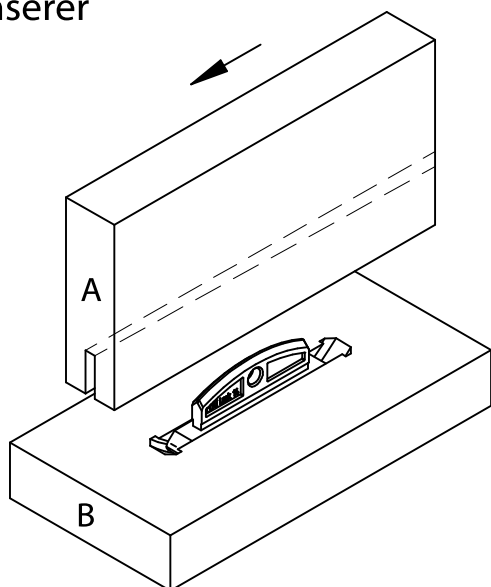
### 1. Percer/fraiser



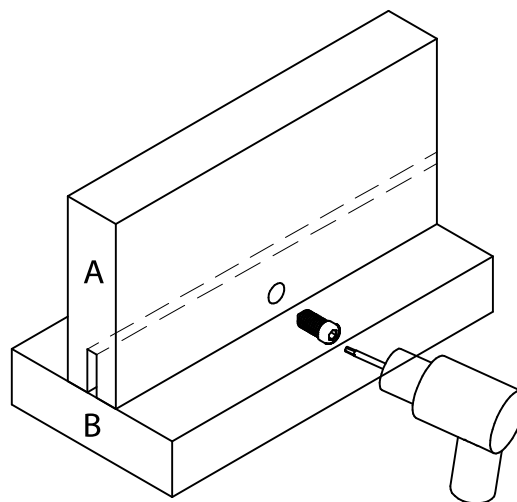
### 2. Fraiser

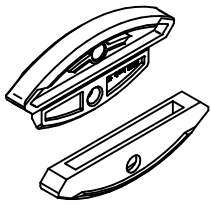


### 3. Insérer



### 4. Visser





# Notice de montage

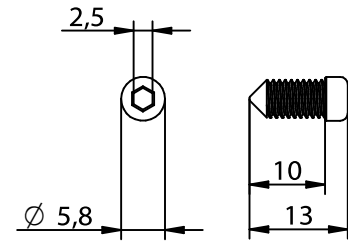
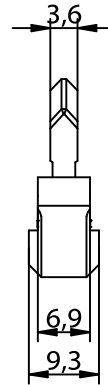
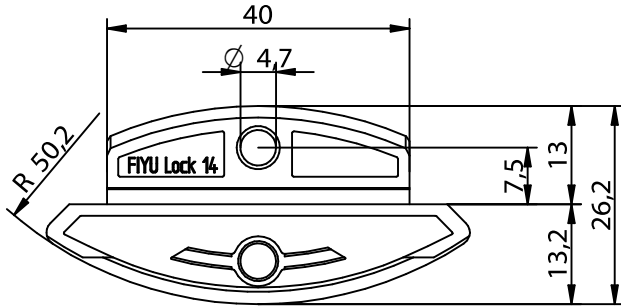
## FIYU LOCK 14

Réf. K859

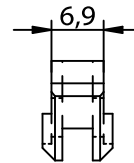
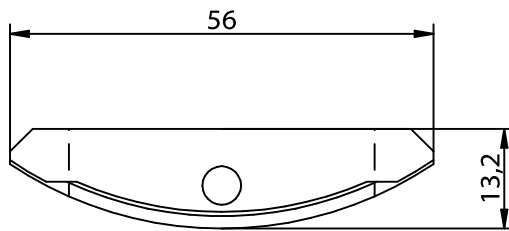
Assembleur corps de meuble

FIYU LOCK 14 - pièce mâle

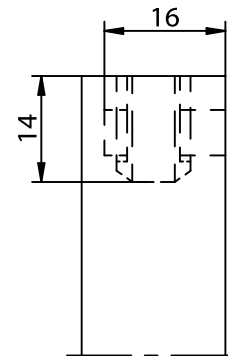
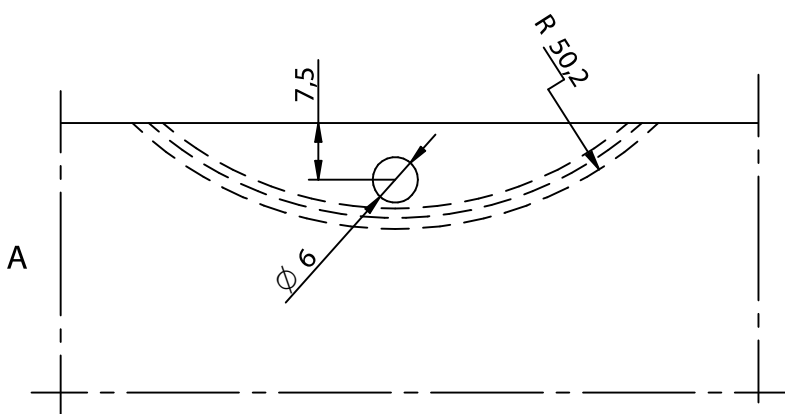
Vis pointeau M5x13mm  
Réf. K857

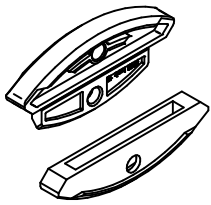


FIYU LOCK 14 - pièce femelle



### 1. Percer/fraiser





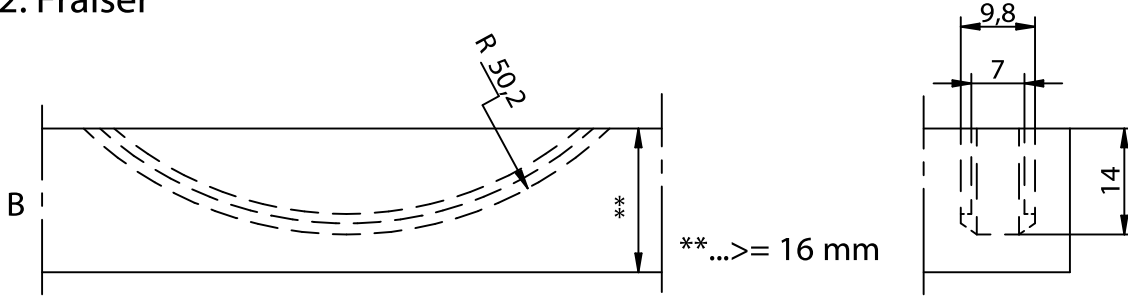
# Notice de montage

## FIYU LOCK 14

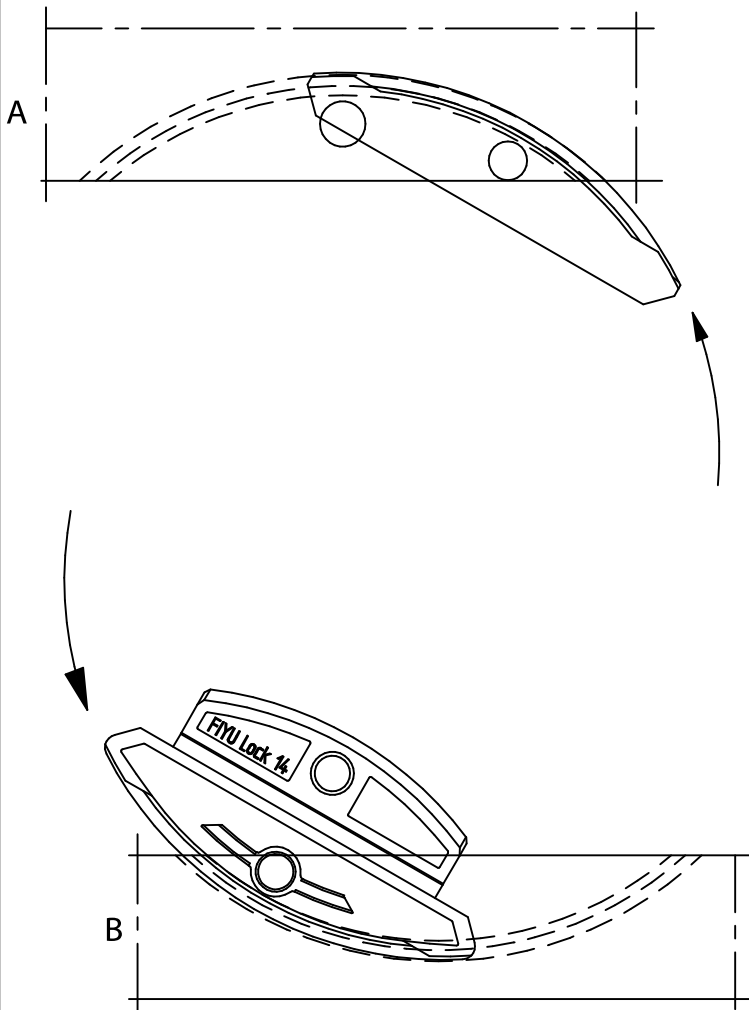
Assembleur corps de meuble

Réf. K859

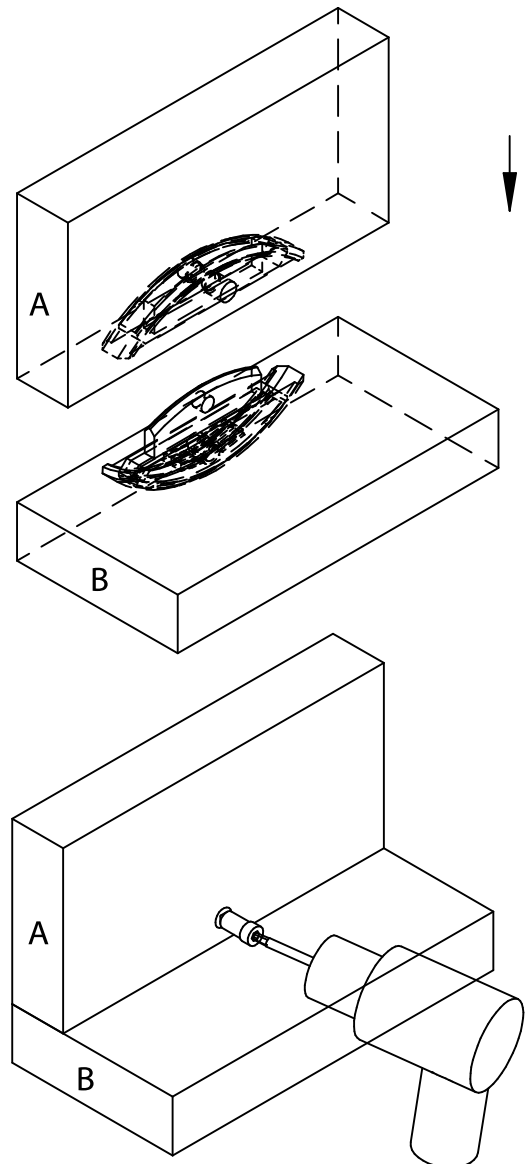
### 2. Fraiser



### 3. Insérer



### 4. Emboîter les éléments



Assembleur à emboîter avec  
vis pointeau M5x13