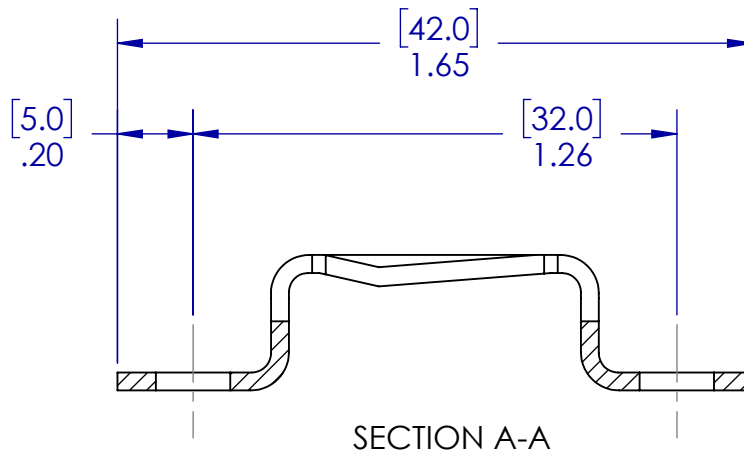
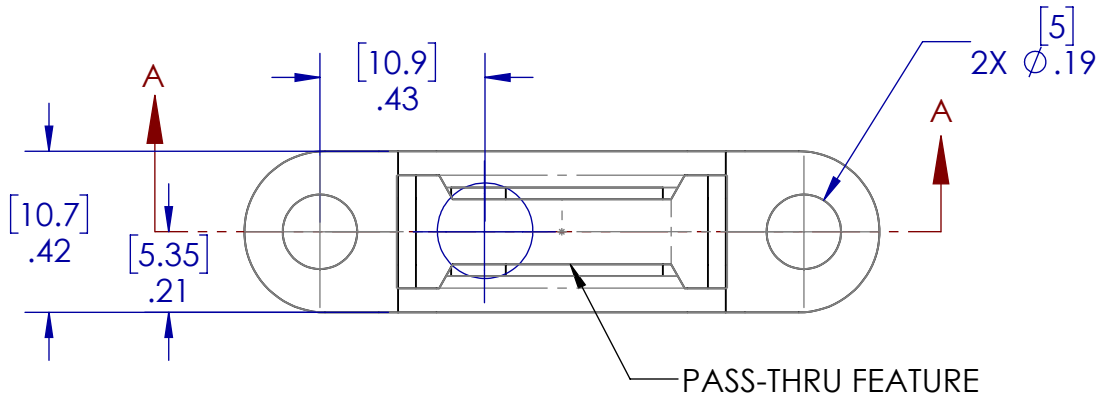
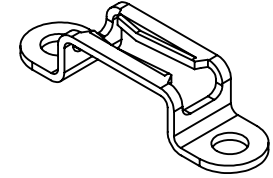


NOTE:

1. DIMENSIONS SHOWN IN [] ARE IN MM
2. REFERENCE PARTS ARE FOR PLACEMENT ONLY. THE INTERFACE BETWEEN THE CLIP AND SCREW IS NOT REPRESENTATIVE OF ACTUAL MODELS AND SHOULD NOT BE USED FOR FIT OR FUNCTION. REFER TO INSTRUCTION MANUAL AND POCKET INSTRUCTION DRAWINGS FOR EXACT PLACEMENT OF MOD-EEZ CLIPS AND SCREWS.



FOR REFERENCE ONLY

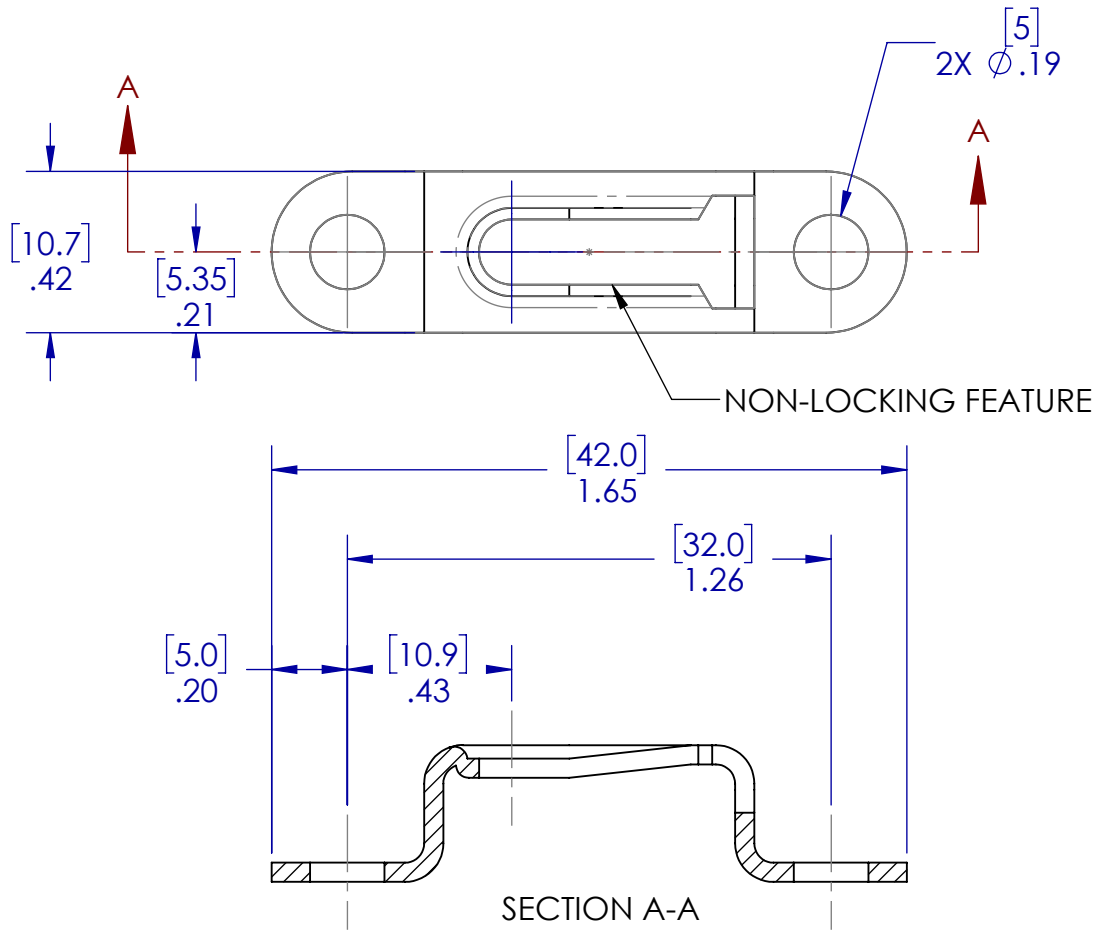
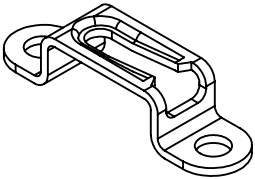
KNAPP®
connectors.com

THIS DRAWING IS PROPERTY OF:
KNAPP USA INC.
12245 NATIONS FORD RD STE 403
PINEVILLE, NC 28134
WWW.KNAPPCONNECTORS.COM


MATERIAL STEEL (PHOSPHATE)			
PART NO. 4031		PART NAME CLIP 11 X 42 PASS-THRU	
DRAWN BY JAB	ISO NO	SCALE 2:1	REVISION V01

NOTE:

- 1. DIMENSIONS SHOWN IN [] ARE IN MM
- 2. REFERENCE PARTS ARE FOR PLACEMENT ONLY. THE INTERFACE BETWEEN THE CLIP AND SCREW IS NOT REPRESENTATIVE OF ACTUAL MODELS AND SHOULD NOT BE USED FOR FIT OR FUNCTION. REFER TO INSTRUCTION MANUAL AND POCKET INSTRUCTION DRAWINGS FOR EXACT PLACEMENT OF MOD-EEZ CLIPS AND SCREWS.

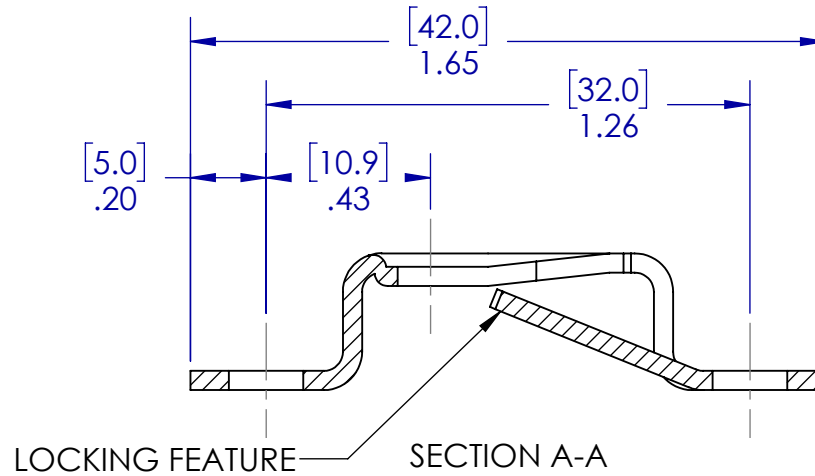
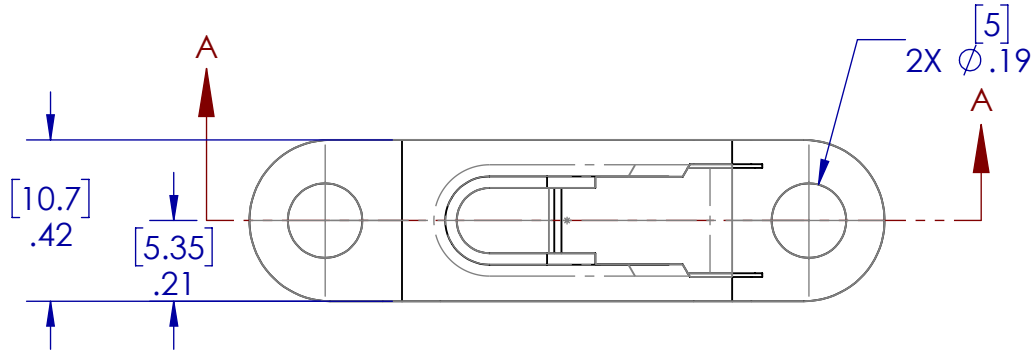
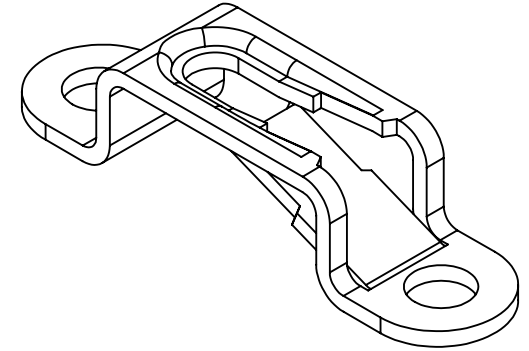


FOR REFERENCE ONLY

	THIS DRAWING IS PROPERTY OF: KNAPP USA INC. 12245 NATIONS FORD RD STE 403 PINEVILLE, NC 28134 WWW.KNAPPCONNECTORS.COM	MATERIAL STEEL (PHOSPHATE)	
		PART NO. 4032	PART NAME CLIP - 11 X 42 NON-LOCKING
DRAWN BY JAB	ISO NO	SCALE 2:1	REVISION V01

NOTE:

1. DIMENSIONS SHOWN IN [] ARE IN MM
2. REFERENCE PARTS ARE FOR PLACEMENT ONLY. THE INTERFACE BETWEEN THE CLIP AND SCREW IS NOT REPRESENTATIVE OF ACTUAL MODELS AND SHOULD NOT BE USED FOR FIT OR FUNCTION. REFER TO INSTRUCTION MANUAL AND POCKET INSTRUCTION DRAWINGS FOR EXACT PLACEMENT OF MOD-EEZ CLIPS AND SCREWS.



FOR REFERENCE ONLY

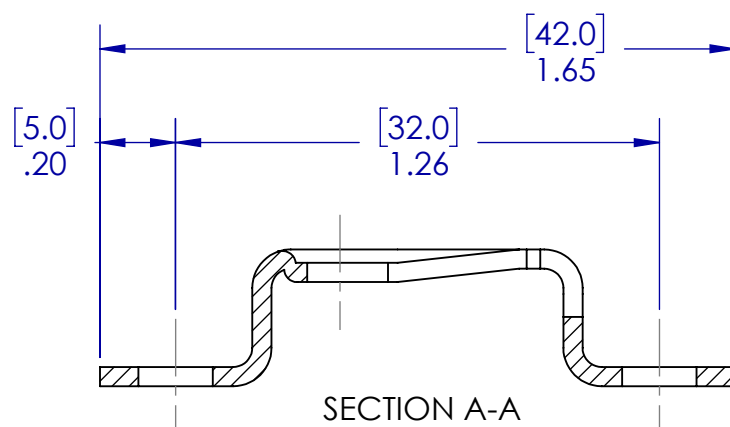
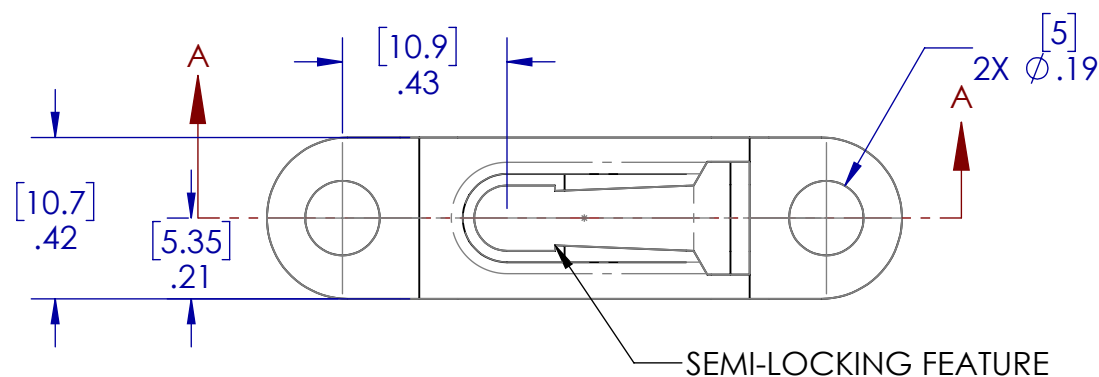
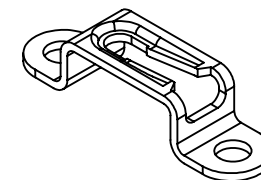
KNAPP®
connectors.com

THIS DRAWING IS PROPERTY OF:
KNAPP USA INC.
12245 NATIONS FORD RD STE 403
PINEVILLE, NC 28134
WWW.KNAPPCONNECTORS.COM

MATERIAL STEEL (PHOSPHATE)			
PART NO. 4034		PART NAME CLIP - 11 X 42 LOCKING	
DRAWN BY JAB	ISO NO	SCALE 2:1	REVISION V01

NOTE:

1. DIMENSIONS SHOWN IN [] ARE IN MM
2. REFERENCE PARTS ARE FOR PLACEMENT ONLY. THE INTERFACE BETWEEN THE CLIP AND SCREW IS NOT REPRESENTATIVE OF ACTUAL MODELS AND SHOULD NOT BE USED FOR FIT OR FUNCTION. REFER TO INSTRUCTION MANUAL AND POCKET INSTRUCTION DRAWINGS FOR EXACT PLACEMENT OF MOD-EEZ CLIPS AND SCREWS.



FOR REFERENCE ONLY

KNAPP®
connectors.com

THIS DRAWING IS PROPERTY OF:
KNAPP USA INC.
12245 NATIONS FORD RD STE 403
PINEVILLE, NC 28134
WWW.KNAPPCONNECTORS.COM

MATERIAL STEEL (PHOSPHATE)			
PART NO. 4035		PART NAME CLIP - 11 X 42 SEMI-LOCKING	
DRAWN BY JAB	ISO NO	SCALE 2:1	REVISION V01