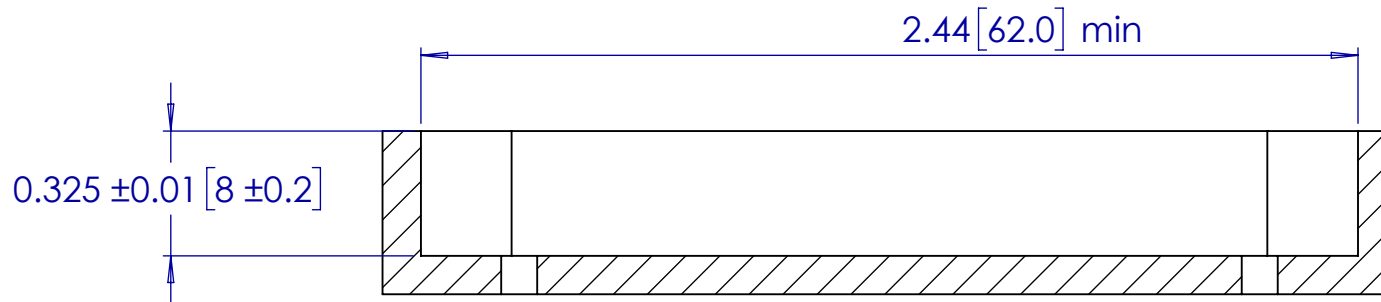
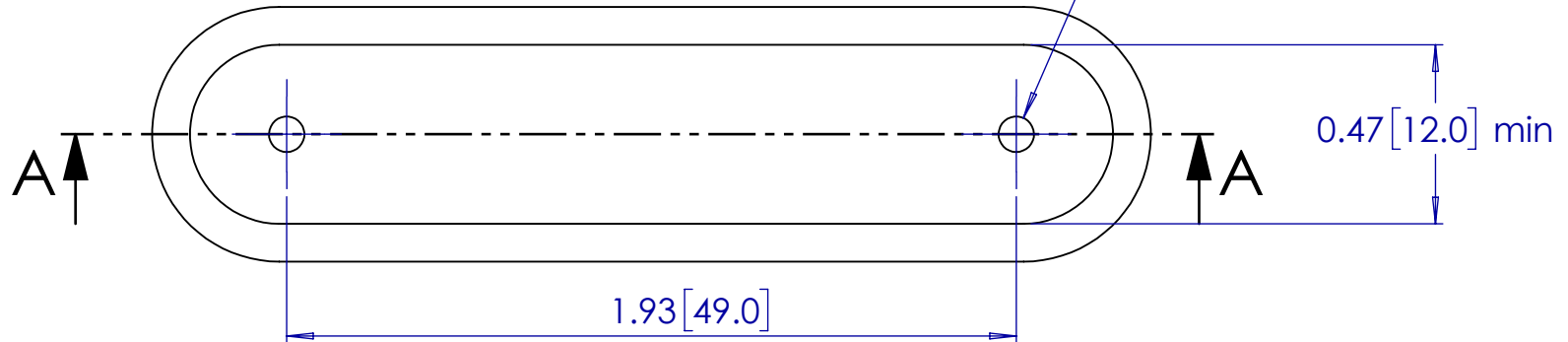


# NOTES:

1. DIMENSIONS SHOWN IN [ ] ARE IN MM
2. HOLES ARE FOR #8 PAN HEAD WOOD SCREWS OR 4.5MM WOOD SCREWS.
3. SET NOMINAL POCKET DEPTH TO 8.0 MM.  
USE UP TO 8.2 MM FOR TIGHTER FIT; USE 7.8 MM FOR LOOSER FIT
4. POCKET SUITED FOR [3/4+] 19+mm BOARD MATERIAL

2X .093in - 2.4mm (Soft wood)  
2x .109in - 2.8mm (Hardwood)



## SECTION A-A

**KNAPP®**  
connectors.com

THIS DRAWING IS PROPERTY OF:  
KNAPP USA INC.  
12245 NATIONS FORD RD STE 403  
PINEVILLE, NC 28134  
WWW.KNAPPCONNECTORS.COM

### MATERIAL

PART NO.  
4060 SINGLE SERIES  
FOR 19+mm MATERIAL

### PART NAME

CLOSED POCKET

DRAWN BY JAB

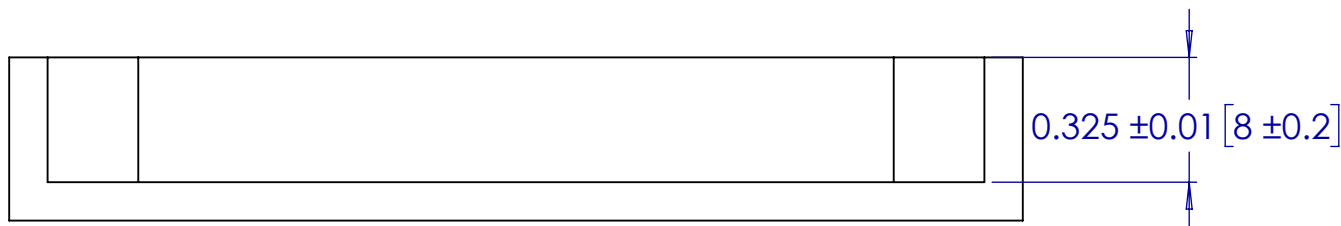
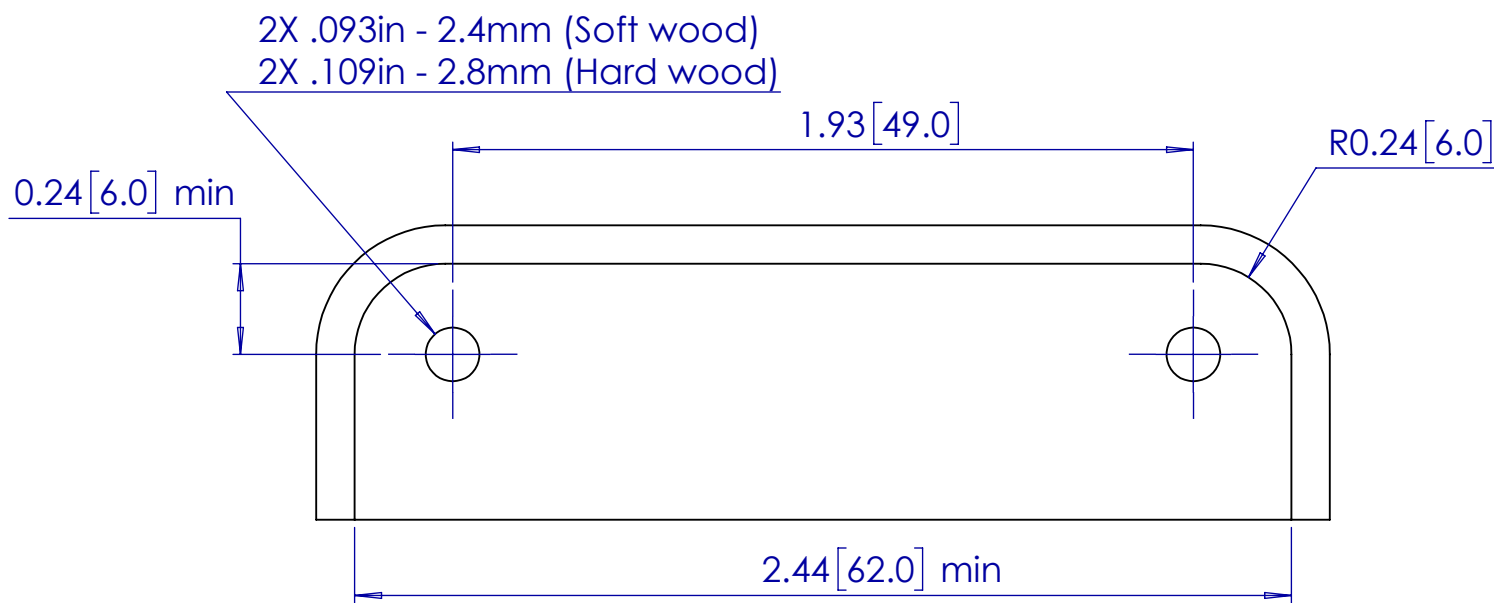
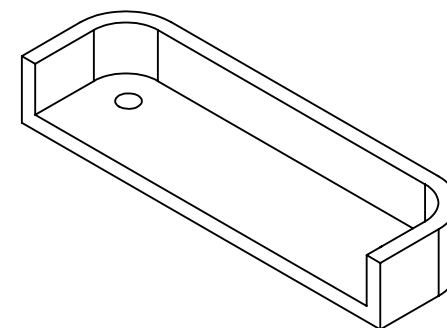
ISO NO

SCALE 2:1

REVISION V01

# NOTES:

1. DIMENSIONS SHOWN IN [ ] ARE IN MM
2. HOLES ARE FOR #8 PAN HEAD WOOD SCREWS OR 4.5MM WOOD SCREWS.
3. SET NOMINAL POCKET DEPTH TO 8.0 MM.  
USE UP TO 8.2 MM FOR TIGHTER FIT; USE 7.8 MM FOR LOOSER FIT
4. POCKET SUITED FOR [3/4+] 19+mm BOARD MATERIAL



**KNAPP®**  
connectors.com

THIS DRAWING IS PROPERTY OF:  
KNAPP USA INC.  
12245 NATIONS FORD RD STE 403  
PINEVILLE, NC 28134  
WWW.KNAPPCONNECTORS.COM

MATERIAL

PART NO.  
4060 SINGLE SERIES  
FOR 19+mm MATERIAL

PART NAME

OPEN POCKET

DRAWN BY JAB

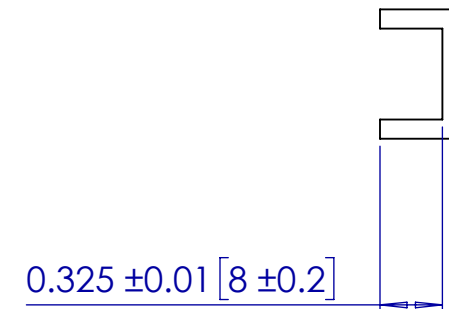
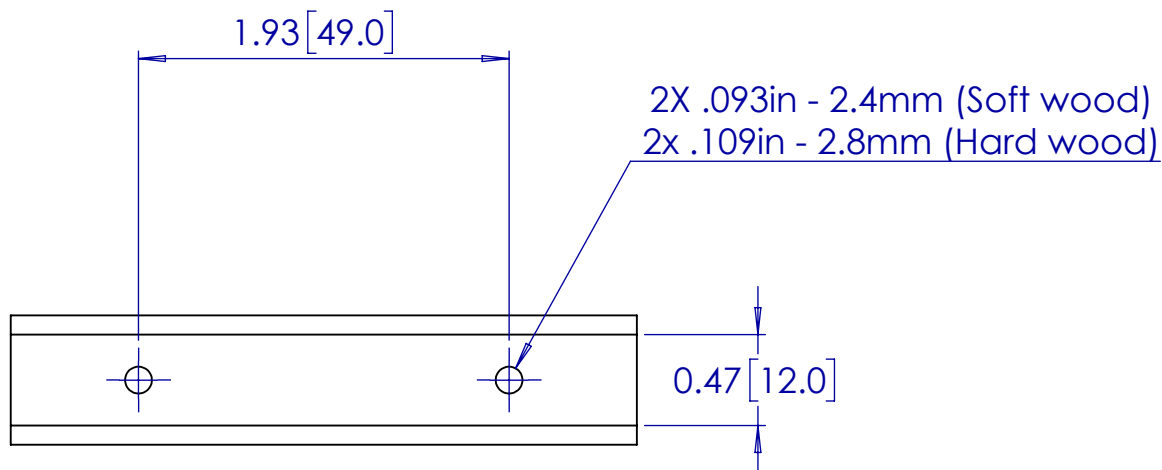
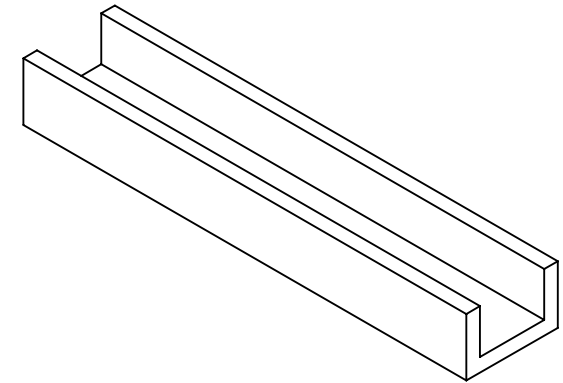
ISO NO

SCALE 2:1

REVISION V01

# NOTES:

1. DIMENSIONS SHOWN IN [ ] ARE IN MM
2. HOLES ARE FOR #8 PAN HEAD WOOD SCREWS OR 4.5MM WOOD SCREWS.
3. SET NOMINAL POCKET DEPTH TO 8.0 MM.  
USE UP TO 8.2 MM FOR TIGHTER FIT; USE 7.8 MM FOR LOOSER FIT
4. POCKET SUITED FOR [3/4+] 19+mm BOARD MATERIAL



**KNAPP®**  
connectors.com

THIS DRAWING IS PROPERTY OF:  
KNAPP USA INC.  
12245 NATIONS FORD RD STE 403  
PINEVILLE, NC 28134  
WWW.KNAPPCONNECTORS.COM

MATERIAL

PART NO.  
4060 SINGLE SERIES  
FOR 19+mm MATERIAL

PART NAME  
PASS THRU POCKET

DRAWN BY  
JAB

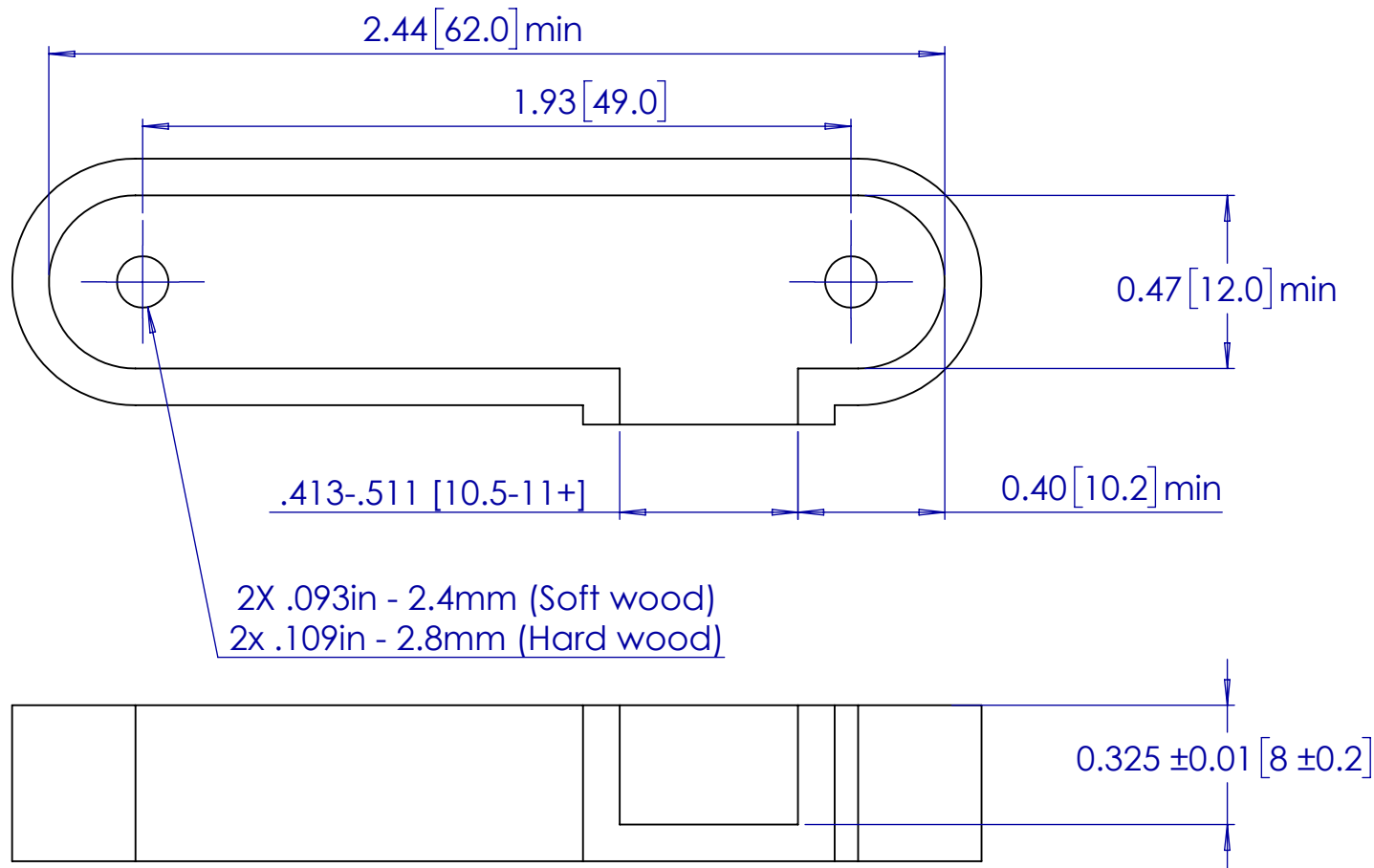
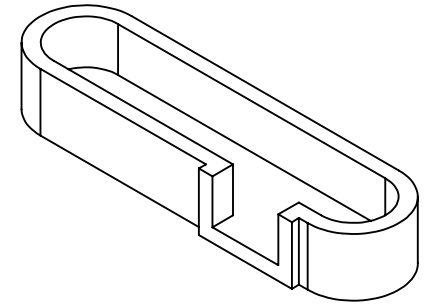
ISO NO

SCALE  
1:1

REVISION  
V01

NOTES:

1. DIMENSIONS SHOWN IN [ ] ARE IN MM
2. HOLES ARE FOR #8 PAN HEAD WOOD SCREWS OR 4.5MM WOOD SCREWS.
3. SET NOMINAL POCKET DEPTH TO 8.0 MM.  
USE UP TO 8.2 MM FOR TIGHTER FIT; USE 7.8 MM FOR LOOSER FIT
4. POCKET SUITED FOR [3/4+] 19+mm BOARD MATERIAL



**KNAPP®**  
connectors.com

THIS DRAWING IS PROPERTY OF:  
KNAPP USA INC.  
12245 NATIONS FORD RD STE 403  
PINEVILLE, NC 28134  
WWW.KNAPPCONNECTORS.COM

MATERIAL

PART NO.  
4060 SINGLE SERIES  
FOR 19+mm MATERIAL

PART NAME  
SEMI OPEN POCKET

DRAWN BY  
JAB

ISO NO

SCALE  
2:1

REVISION  
V01