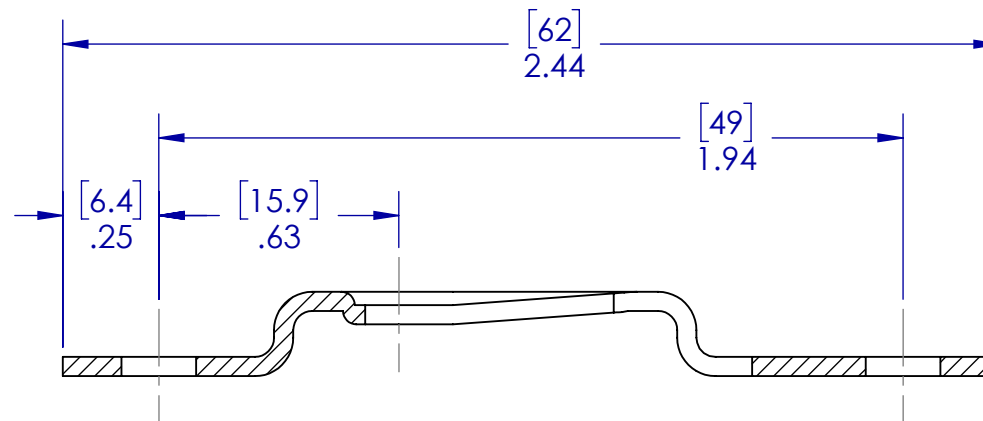
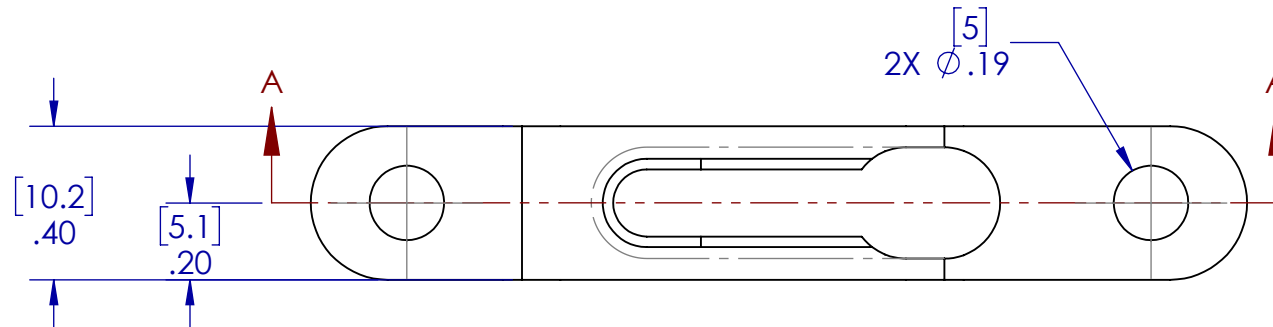
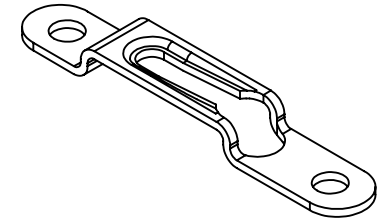


NOTE:

1. DIMENSIONS SHOWN IN [] ARE IN MM
2. REFERENCE PARTS ARE FOR PLACEMENT ONLY. THE INTERFACE BETWEEN THE CLIP AND SCREW IS NOT REPRESENTATIVE OF ACTUAL MODELS AND SHOULD NOT BE USED FOR FIT OR FUNCTION. REFER TO INSTRUCTION MANUAL AND POCKET INSTRUCTION DRAWINGS FOR EXACT PLACEMENT OF MOD-EEZ CLIPS AND SCREWS.



SECTION A-A

FOR REFERENCE ONLY

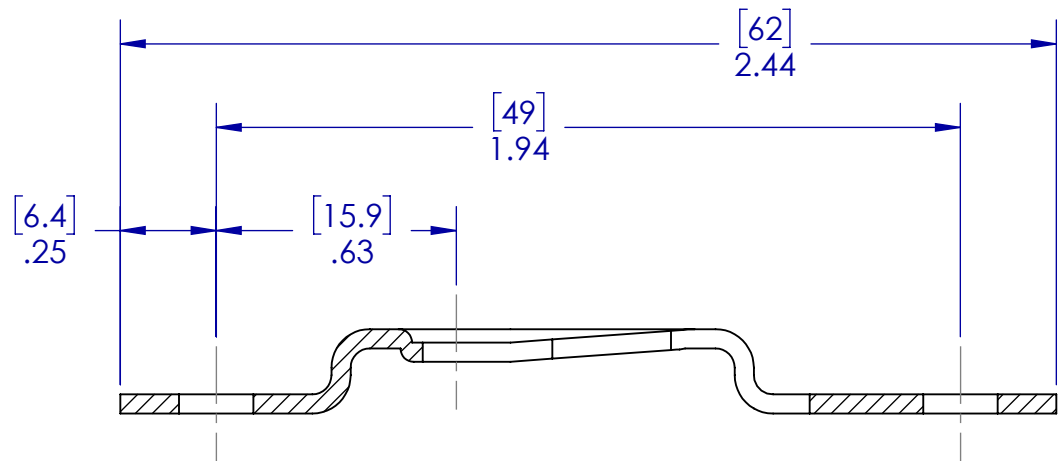
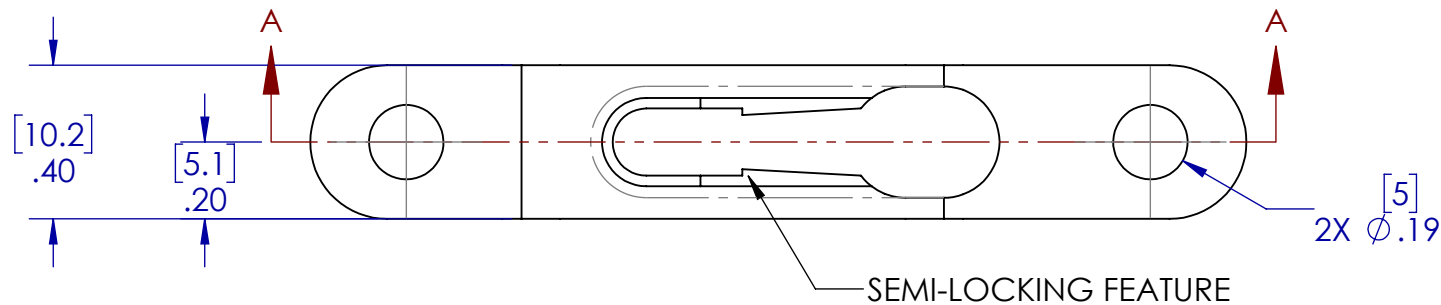
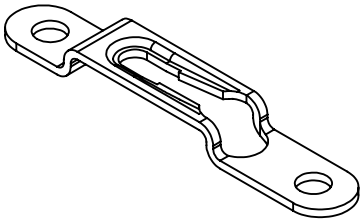
KNAPP®
connectors.com

THIS DRAWING IS PROPERTY OF:
KNAPP US
12245 NATIONS FORD RD STE 403
PINEVILLE, NC 28134
WWW.KNAPPCONNECTORS.COM

MATERIAL STEEL (PHOSPHATE)			
PART NO. 4060		PART NAME CLIP - 10 X 62 NON-LOCKING	
DRAWN BY JAB	ISO NO	SCALE 2:1	REVISION V01

NOTE:

- 1. DIMENSIONS SHOWN IN [] ARE IN MM
- 2. REFERENCE PARTS ARE FOR PLACEMENT ONLY. THE INTERFACE BETWEEN THE CLIP AND SCREW IS NOT REPRESENTATIVE OF ACTUAL MODELS AND SHOULD NOT BE USED FOR FIT OR FUNCTION. REFER TO INSTRUCTION MANUAL AND POCKET INSTRUCTION DRAWINGS FOR EXACT PLACEMENT OF MOD-EEZ CLIPS AND SCREWS.



SECTION A-A

FOR REFERENCE ONLY

TOLERANCES:		 KNAPP [®] <i>connectors.com</i>	THIS DRAWING IS PROPERTY OF: KNAPP US 12245 NATIONS FORD RD STE 403 PINEVILLE, NC 28134 WWW.KNAPPCONNECTORS.COM	MATERIAL STEEL (PHOSPHATE)			
.XX	±.015			PART NO.	PART NAME		
.XXX	±.010			4062	CLIP - 10 X 62 SEMI-LOCKING		
.XXXX	±.005			DRAWN BY	ISO NO	SCALE	REVISION
ANG.	±1°			JAB		2:1	V01
DIMENSIONS ARE IN INCHES							