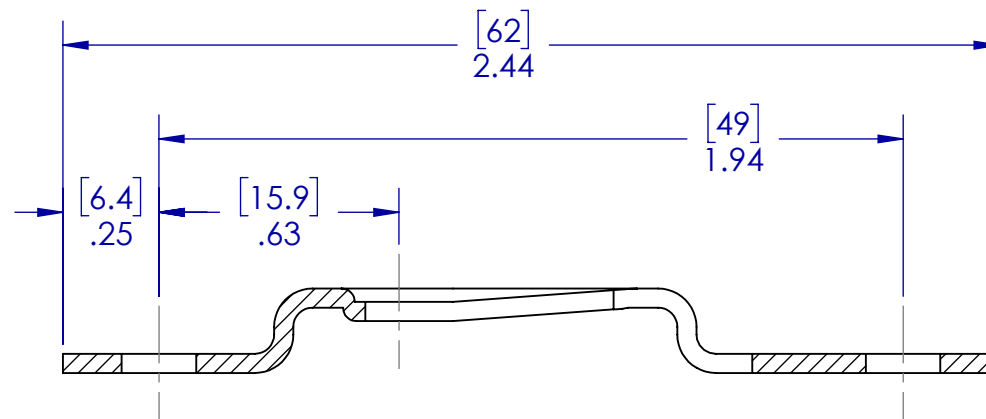
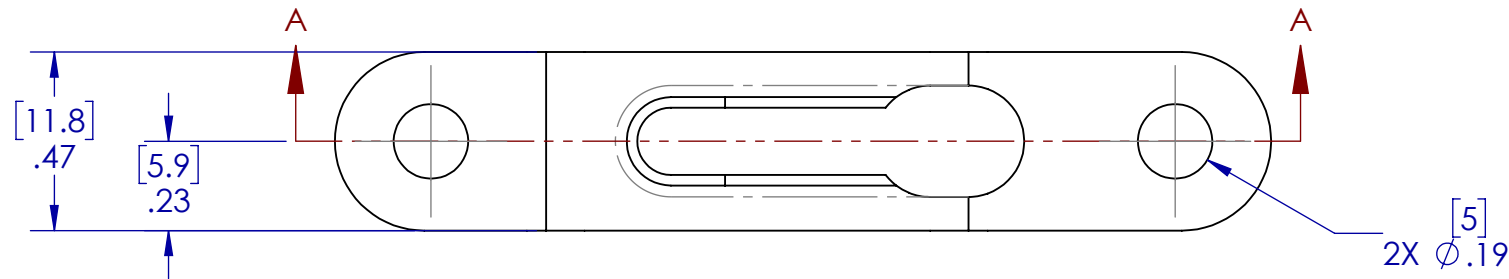
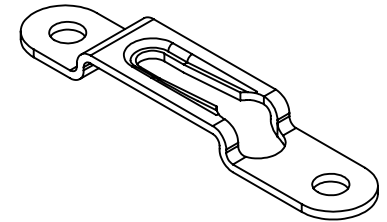


NOTE:

1. DIMENSIONS SHOWN IN [ ] ARE IN MM
2. REFERENCE PARTS ARE FOR PLACEMENT ONLY. THE INTERFACE BETWEEN THE CLIP AND SCREW IS NOT REPRESENTATIVE OF ACTUAL MODELS AND SHOULD NOT BE USED FOR FIT OR FUNCTION. REFER TO INSTRUCTION MANUAL AND POCKET INSTRUCTION DRAWINGS FOR EXACT PLACEMENT OF MOD-EEZ CLIPS AND SCREWS.



SECTION A-A

FOR REFERENCE ONLY

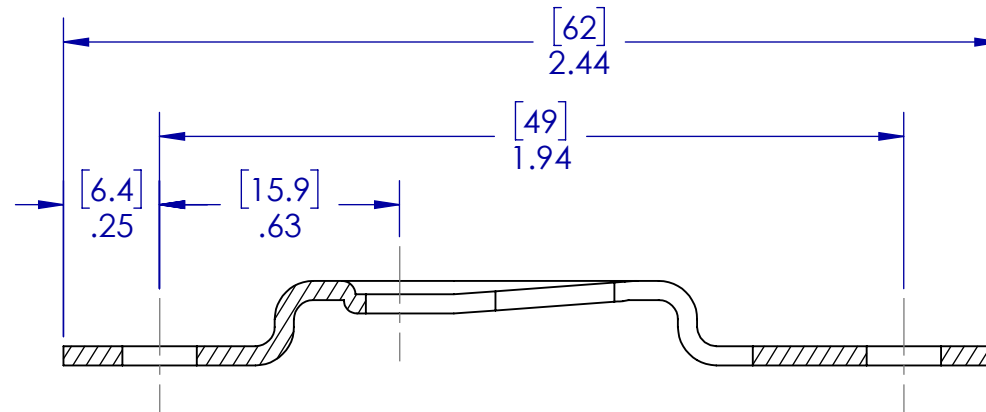
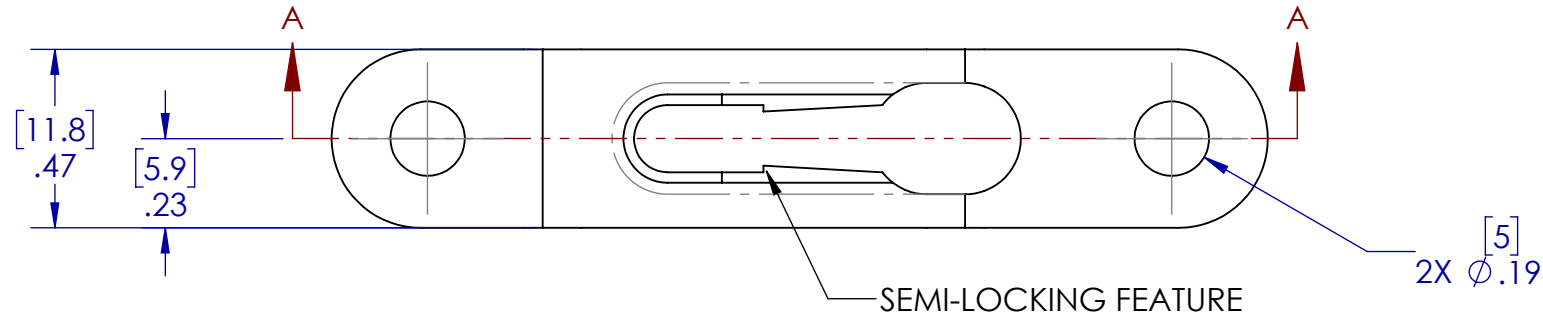
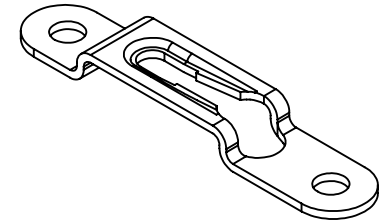
**KNAPP®**  
connectors.com

THIS DRAWING IS PROPERTY OF:  
KNAPP US  
12245 NATIONS FORD RD STE 403  
PINEVILLE, NC 28134  
WWW.KNAPPCONNECTORS.COM

MATERIAL STEEL (PHOSPHATE)		PART NAME CLIP - 12 X 62 NON LOCKING	
PART NO. 4061		SCALE 2:1	
DRAWN BY JAB	ISO NO	REVISION V01	

NOTE:

1. DIMENSIONS SHOWN IN [ ] ARE IN MM
2. REFERENCE PARTS ARE FOR PLACEMENT ONLY. THE INTERFACE BETWEEN THE CLIP AND SCREW IS NOT REPRESENTATIVE OF ACTUAL MODELS AND SHOULD NOT BE USED FOR FIT OR FUNCTION. REFER TO INSTRUCTION MANUAL AND POCKET INSTRUCTION DRAWINGS FOR EXACT PLACEMENT OF MOD-EEZ CLIPS AND SCREWS.



SECTION A-A

FOR REFERENCE ONLY

**KNAPP®**  
connectors.com

THIS DRAWING IS PROPERTY OF:  
KNAPP US  
12245 NATIONS FORD RD STE 403  
PINEVILLE, NC 28134  
WWW.KNAPPCONNECTORS.COM

MATERIAL STEEL (PHOSPHATE)			
PART NO. 4063A		PART NAME CLIP - 12 X 62 SEMI-LOCKING	
DRAWN BY JAB	ISO NO	SCALE 2:1	REVISION V01