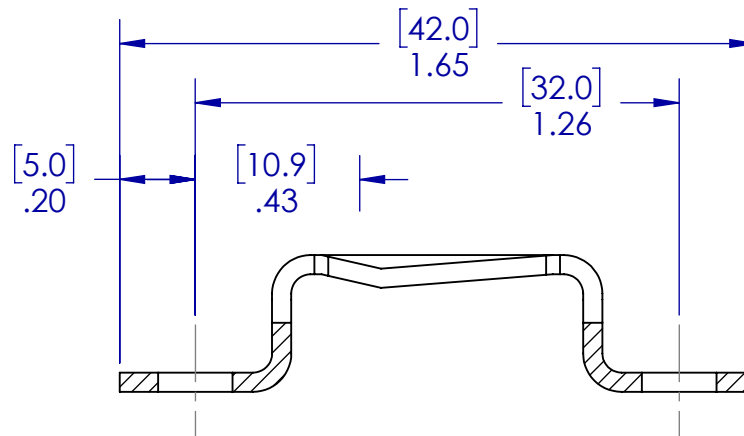
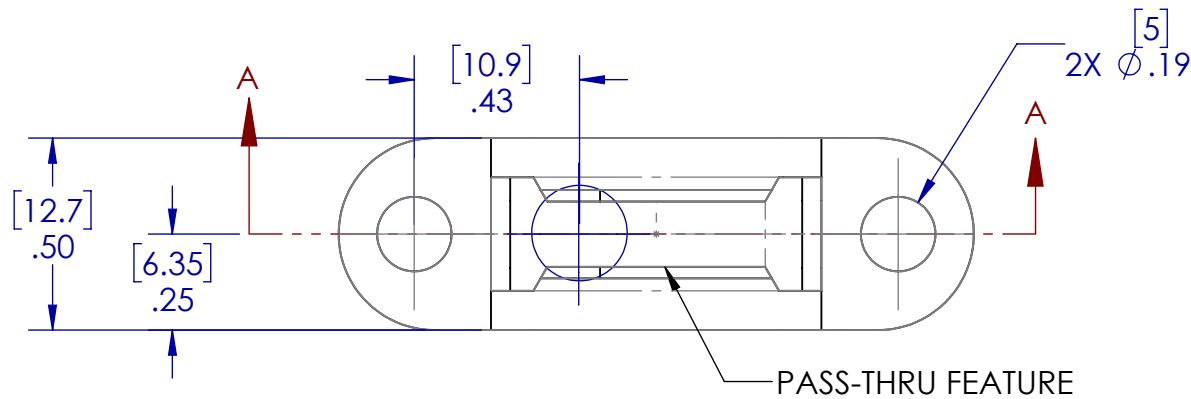
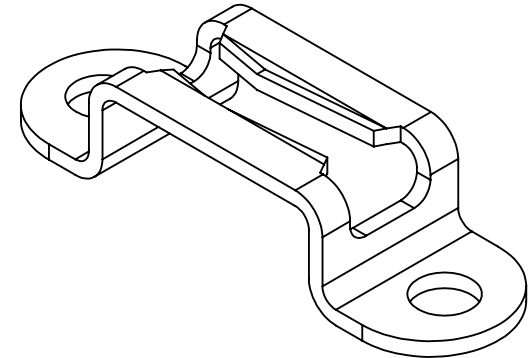


NOTE:

1. DIMENSIONS SHOWN IN [] ARE IN MM
2. REFERENCE PARTS ARE FOR PLACEMENT ONLY. THE INTERFACE BETWEEN THE CLIP AND SCREW IS NOT REPRESENTATIVE OF ACTUAL MODELS AND SHOULD NOT BE USED FOR FIT OR FUNCTION. REFER TO INSTRUCTION MANUAL AND POCKET INSTRUCTION DRAWINGS FOR EXACT PLACEMENT OF MOD-EEZ CLIPS AND SCREWS.



SECTION A-A

FOR REFERENCE ONLY

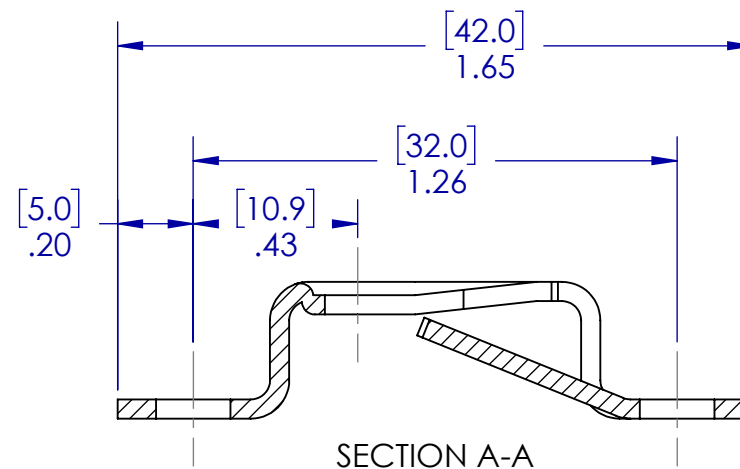
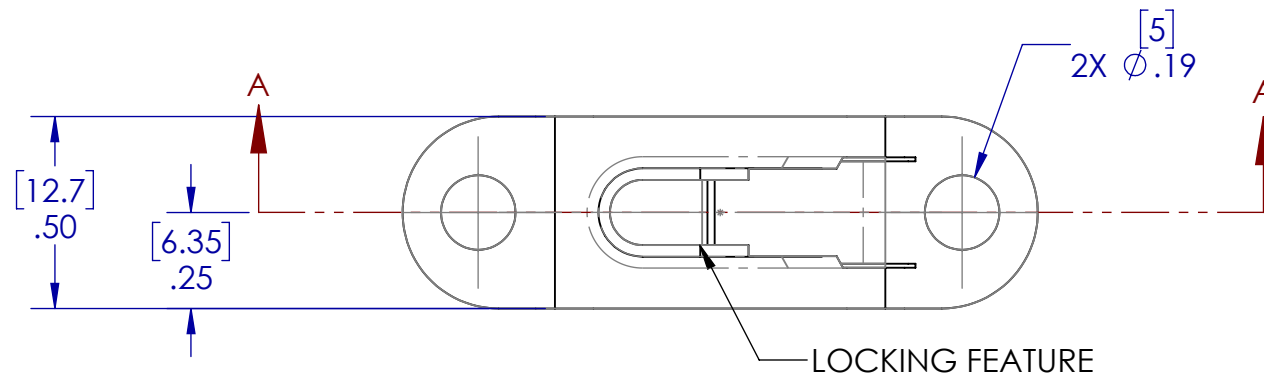
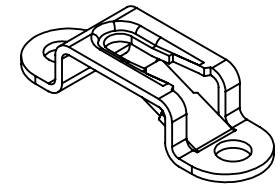
KNAPP®
connectors.com

THIS DRAWING IS PROPERTY OF:
KNAPP USA INC.
12245 NATIONS FORD RD STE 403
PINEVILLE, NC 28134
WWW.KNAPPCONNECTORS.COM

MATERIAL STEEL (PHOSPHATE)			
PART NO. 5030		PART NAME CLIP - 13 X 42 PASS-THRU	
DRAWN BY JAB	ISO NO	SCALE 2:1	REVISION V01

NOTE:

1. DIMENSIONS SHOWN IN [] ARE IN MM
2. REFERENCE PARTS ARE FOR PLACEMENT ONLY. THE INTERFACE BETWEEN THE CLIP AND SCREW IS NOT REPRESENTATIVE OF ACTUAL MODELS AND SHOULD NOT BE USED FOR FIT OR FUNCTION. REFER TO INSTRUCTION MANUAL AND POCKET INSTRUCTION DRAWINGS FOR EXACT PLACEMENT OF MOD-EEZ CLIPS AND SCREWS.



FOR REFERENCE ONLY

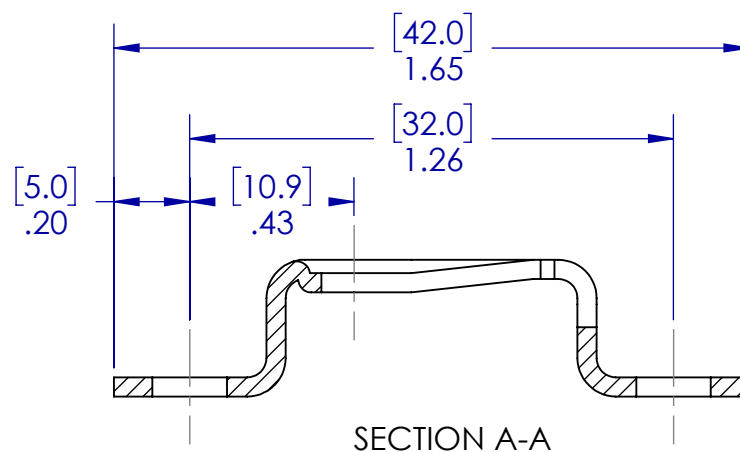
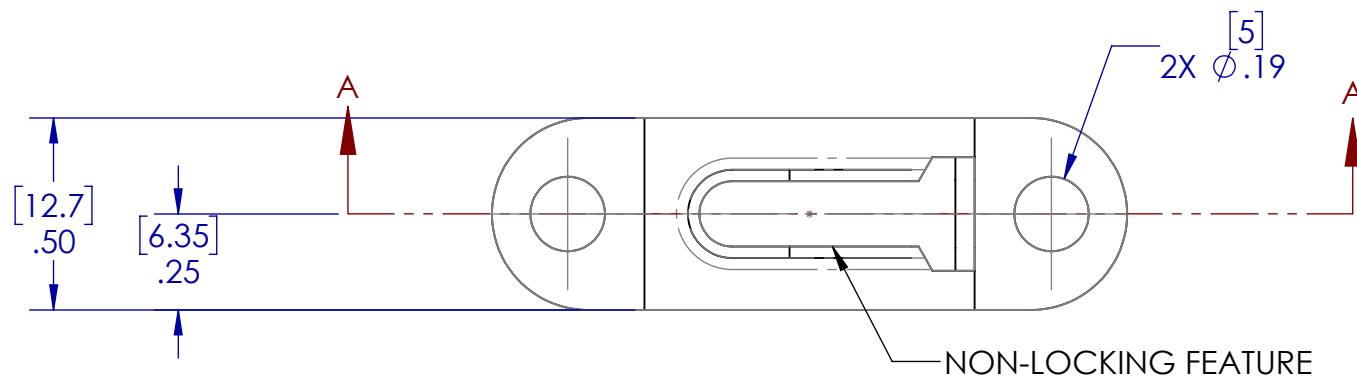
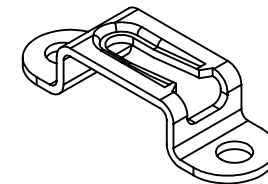
KNAPP®
connectors.com

THIS DRAWING IS PROPERTY OF:
KNAPP US
12245 NATIONS FORD RD STE 403
PINEVILLE, NC 28134
WWW.KNAPPCONNECTORS.COM

MATERIAL STEEL (PHOSPHATE)			
PART NO. 5031		PART NAME CLIP - 13 X 42 LOCKING	
DRAWN BY JAB	ISO NO	SCALE 2:1	REVISION V01

NOTE:

1. DIMENSIONS SHOWN IN [] ARE IN MM
2. REFERENCE PARTS ARE FOR PLACEMENT ONLY. THE INTERFACE BETWEEN THE CLIP AND SCREW IS NOT REPRESENTATIVE OF ACTUAL MODELS AND SHOULD NOT BE USED FOR FIT OR FUNCTION. REFER TO INSTRUCTION MANUAL AND POCKET INSTRUCTION DRAWINGS FOR EXACT PLACEMENT OF MOD-EEZ CLIPS AND SCREWS.



FOR REFERENCE ONLY

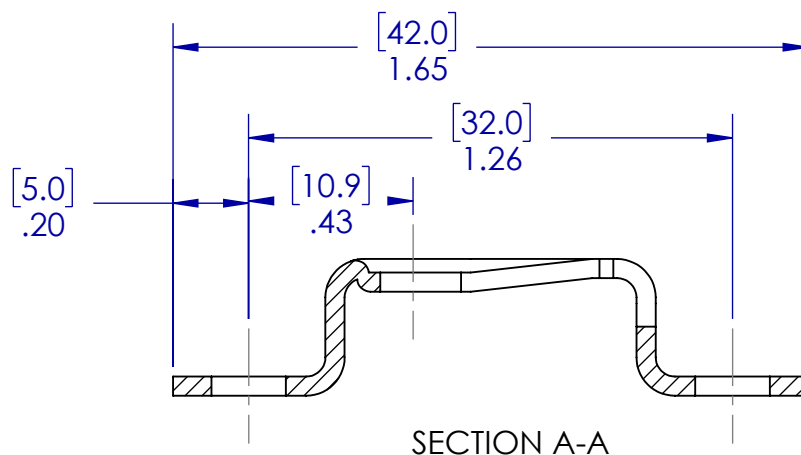
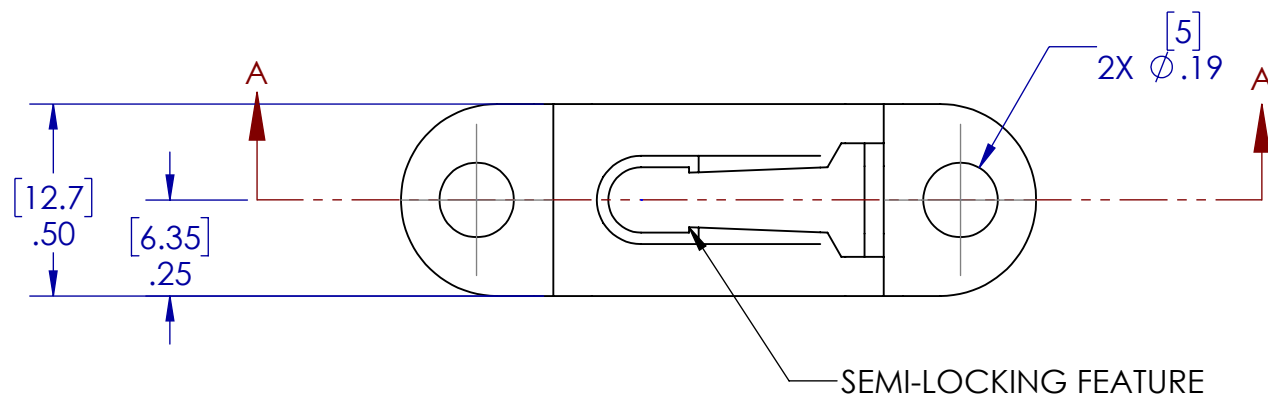
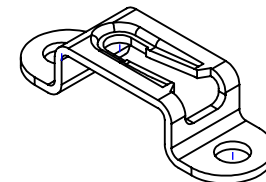
KNAPP®
connectors.com

THIS DRAWING IS PROPERTY OF:
KNAPP US
12245 NATIONS FORD RD STE 403
PINEVILLE, NC 28134
WWW.KNAPPCONNECTORS.COM

MATERIAL STEEL (PHOSPHATE)			
PART NO. 5032		PART NAME CLIP - 13 X 42 NON-LOCKING	
DRAWN BY JAB	ISO NO	SCALE 2:1	REVISION V01

NOTE:

1. DIMENSIONS SHOWN IN [] ARE IN MM
2. REFERENCE PARTS ARE FOR PLACEMENT ONLY. THE INTERFACE BETWEEN THE CLIP AND SCREW IS NOT REPRESENTATIVE OF ACTUAL MODELS AND SHOULD NOT BE USED FOR FIT OR FUNCTION. REFER TO INSTRUCTION MANUAL AND POCKET INSTRUCTION DRAWINGS FOR EXACT PLACEMENT OF MOD-EEZ CLIPS AND SCREWS.



FOR REFERENCE ONLY

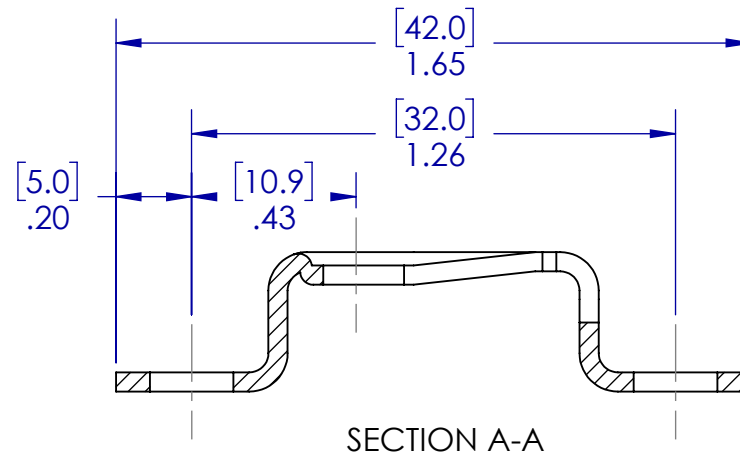
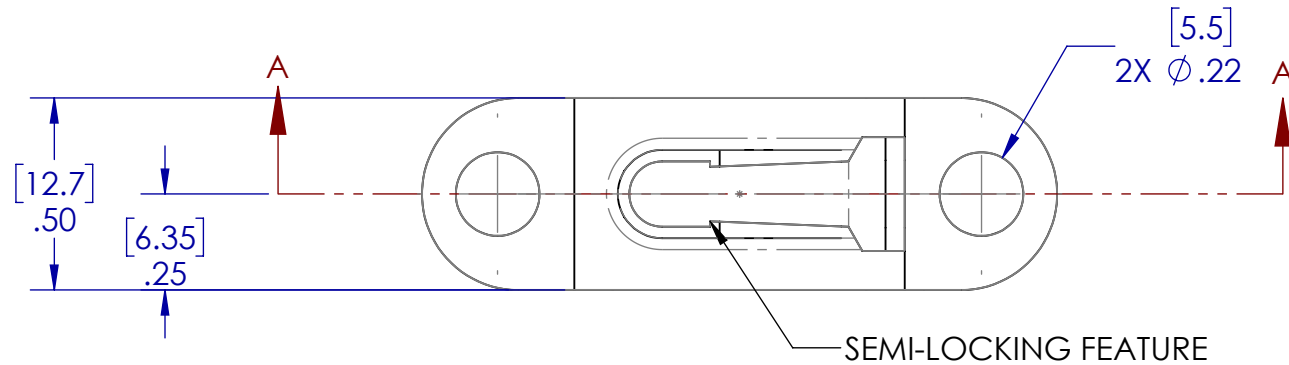
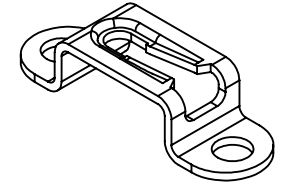
KNAPP®
connectors.com

THIS DRAWING IS PROPERTY OF:
KNAPP US
12245 NATIONS FORD RD STE 403
PINEVILLE, NC 28134
WWW.KNAPPCONNECTORS.COM

MATERIAL STEEL (PHOSPHATE)			
PART NO. 5032A		PART NAME CLIP - 13 X 42 SEMI-LOCKING	
DRAWN BY JAB	ISO NO	SCALE 2:1	REVISION V01

NOTE:

1. DIMENSIONS SHOWN IN [] ARE IN MM
2. REFERENCE PARTS ARE FOR PLACEMENT ONLY. THE INTERFACE BETWEEN THE CLIP AND SCREW IS NOT REPRESENTATIVE OF ACTUAL MODELS AND SHOULD NOT BE USED FOR FIT OR FUNCTION. REFER TO INSTRUCTION MANUAL AND POCKET INSTRUCTION DRAWINGS FOR EXACT PLACEMENT OF MOD-EEZ CLIPS AND SCREWS.



FOR REFERENCE ONLY

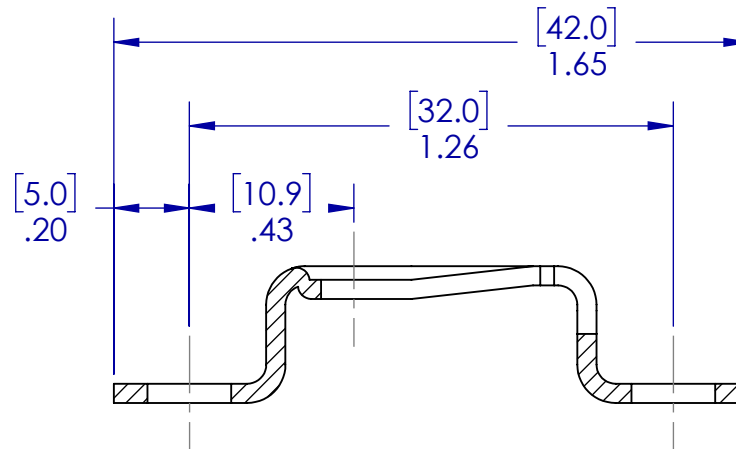
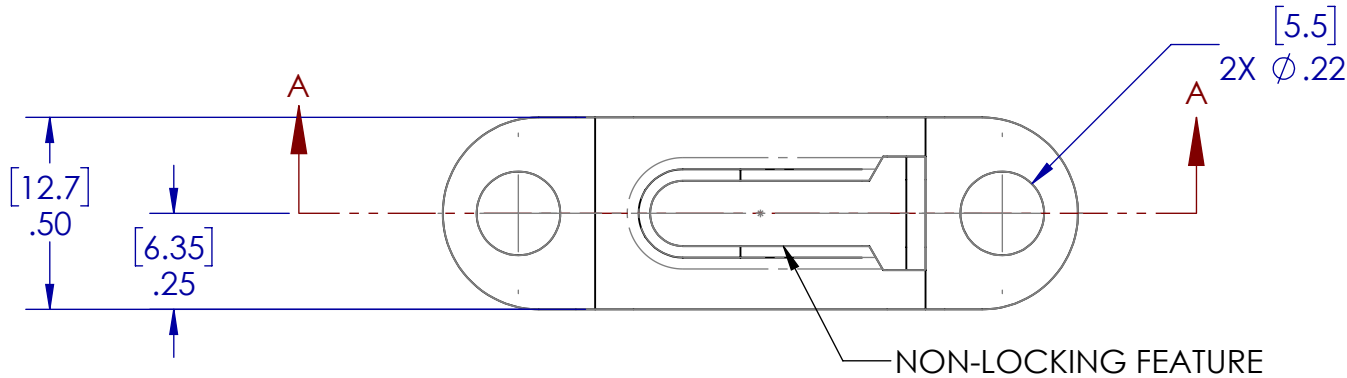
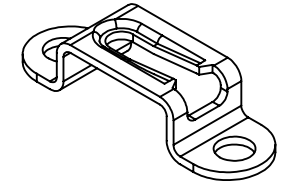
KNAPP®
connectors.com

THIS DRAWING IS PROPERTY OF:
KNAPP US
12245 NATIONS FORD RD STE 403
PINEVILLE, NC 28134
WWW.KNAPPCONNECTORS.COM

MATERIAL STEEL (OILED)		PART NAME CLIP - 13 X 42 SEMI-LOCKING (OILED)	
PART NO. 5032AC		SCALE 2:1	
DRAWN BY JAB	ISO NO	REVISION V01	

NOTE:

1. DIMENSIONS SHOWN IN [] ARE IN MM
2. REFERENCE PARTS ARE FOR PLACEMENT ONLY. THE INTERFACE BETWEEN THE CLIP AND SCREW IS NOT REPRESENTATIVE OF ACTUAL MODELS AND SHOULD NOT BE USED FOR FIT OR FUNCTION. REFER TO INSTRUCTION MANUAL AND POCKET INSTRUCTION DRAWINGS FOR EXACT PLACEMENT OF MOD-EEZ CLIPS AND SCREWS.



SECTION A-A

FOR REFERENCE ONLY



THIS DRAWING IS PROPERTY OF:
KNAPP US
12245 NATIONS FORD RD STE 403
PINEVILLE, NC 28134
WWW.KNAPPCONNECTORS.COM

MATERIAL STEEL (OILED)		PART NAME CLIP - 13 X 42 NON-LOCKING (OILED)	
PART NO. 5032C			
DRAWN BY JAB	ISO NO	SCALE 2:1	REVISION V01