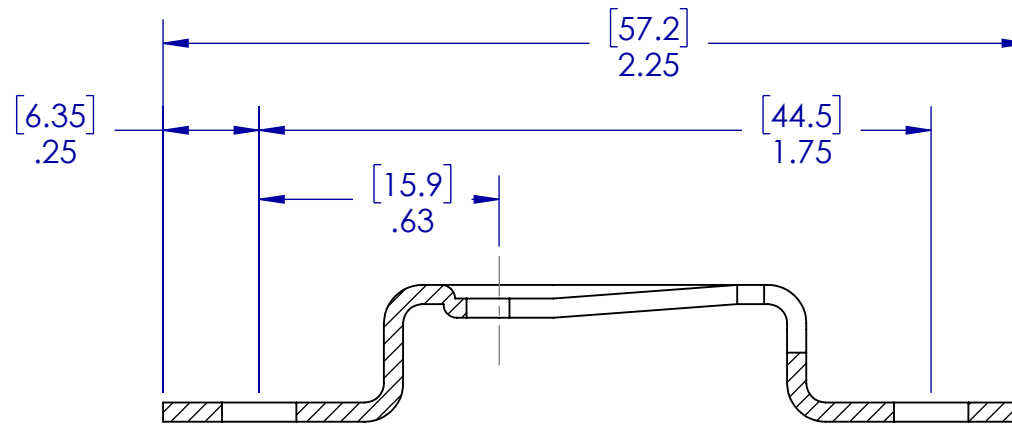
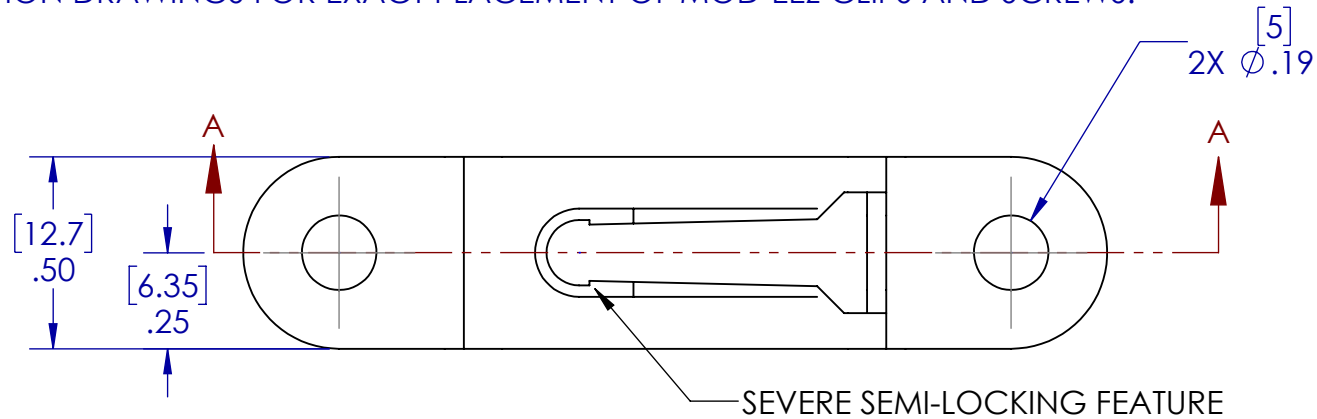


1. DIMENSIONS SHOWN IN [] ARE IN MM
2. REFERENCE PARTS ARE FOR PLACEMENT ONLY. THE INTERFACE BETWEEN THE CLIP AND SCREW IS NOT REPRESENTATIVE OF ACTUAL MODELS AND SHOULD NOT BE USED FOR FIT OR FUNCTION. REFER TO INSTRUCTION MANUAL AND POCKET INSTRUCTION DRAWINGS FOR EXACT PLACEMENT OF MOD-EEZ CLIPS AND SCREWS.



FOR REFERENCE ONLY

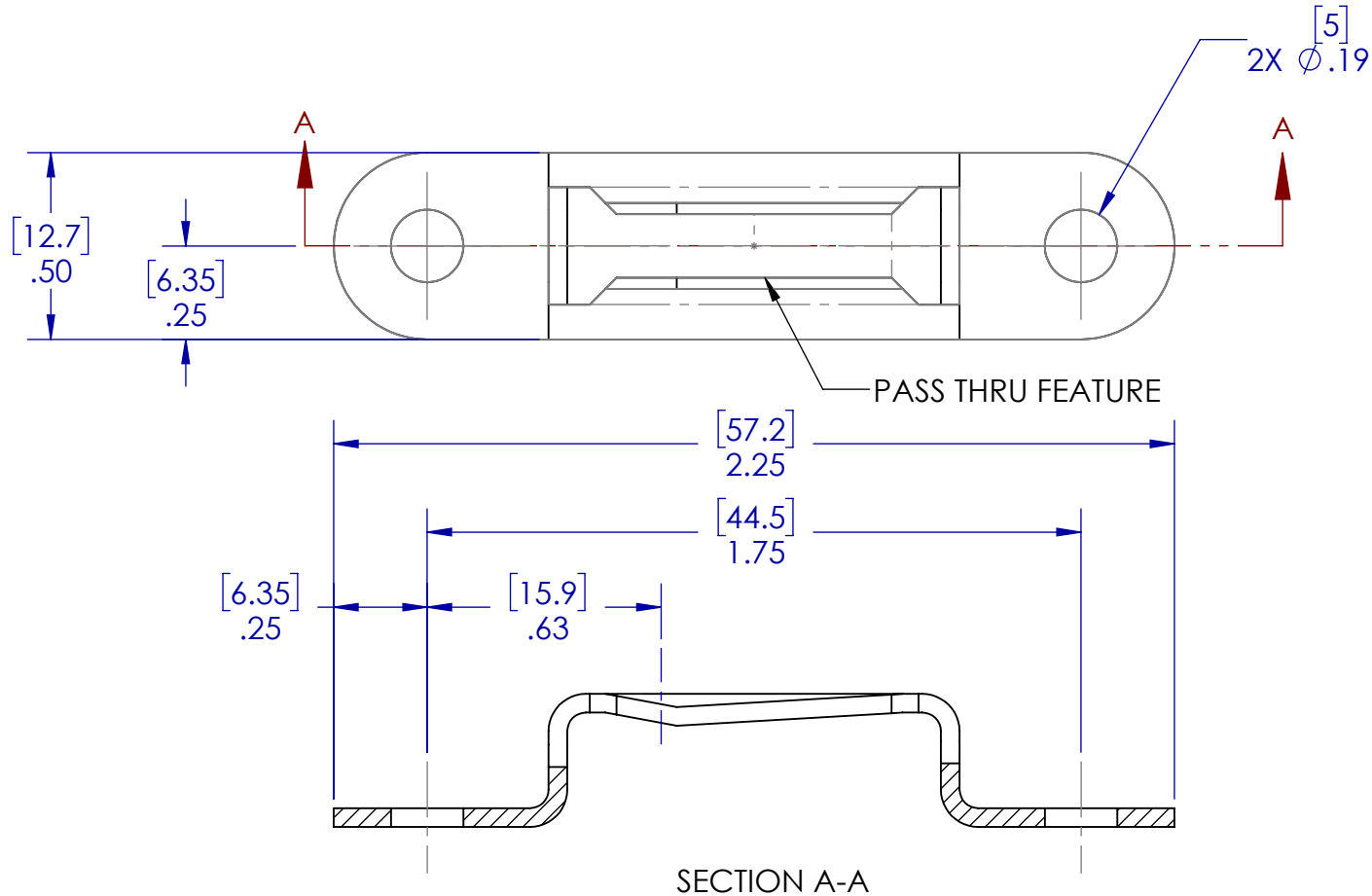
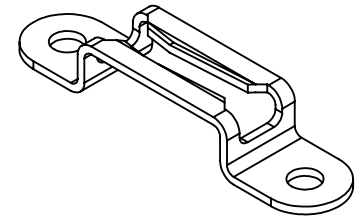


THIS DRAWING IS PROPERTY OF:
KNAPP US
12245 NATIONS FORD RD STE 403
PINEVILLE, NC 28134
WWW.KNAPPCONNECTORS.COM

MATERIAL				STEEL (PHOSPHATE)									
PART NO.			PART NAME										
5060			CLIP - 13 X 58 SEVERE SEMI-LOCKING										
DRAWN BY		JAB		ISO NO		SCALE		2:1		REVISION		V01	

NOTE:

1. DIMENSIONS SHOWN IN [] ARE IN MM
2. REFERENCE PARTS ARE FOR PLACEMENT ONLY. THE INTERFACE BETWEEN THE CLIP AND SCREW IS NOT REPRESENTATIVE OF ACTUAL MODELS AND SHOULD NOT BE USED FOR FIT OR FUNCTION. REFER TO INSTRUCTION MANUAL AND POCKET INSTRUCTION DRAWINGS FOR EXACT PLACEMENT OF MOD-EEZ CLIPS AND SCREWS.



FOR REFERENCE ONLY

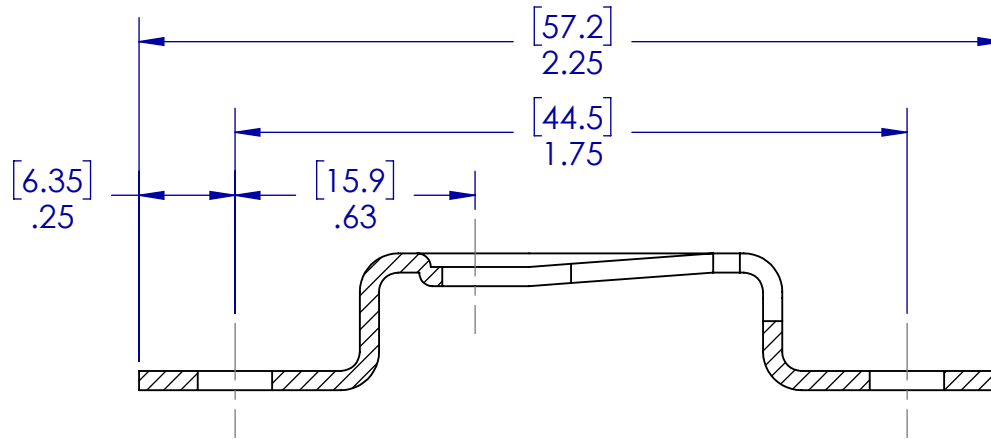
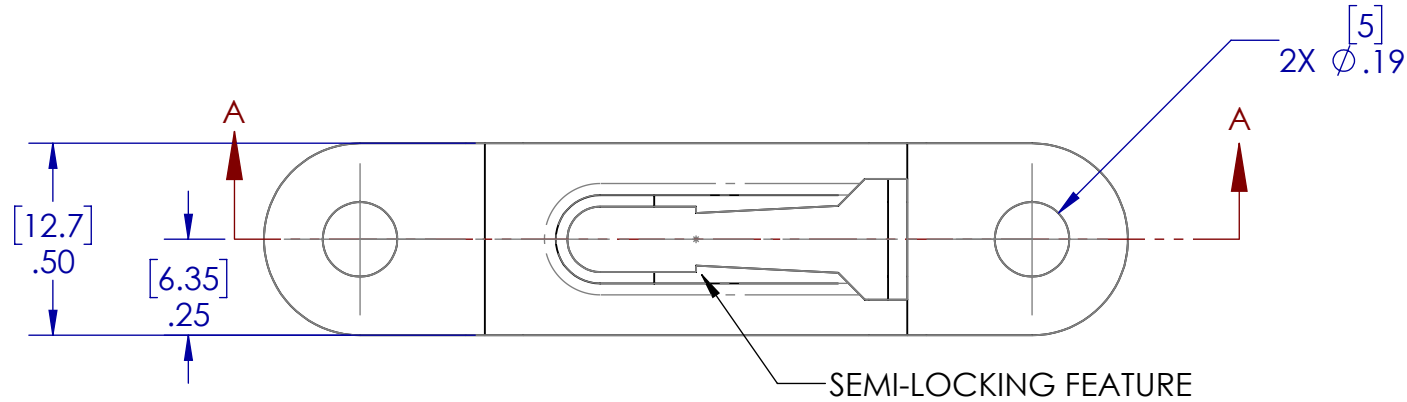
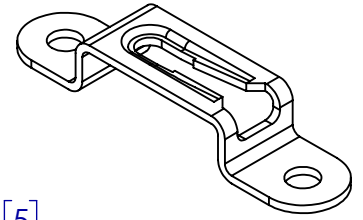
KNAPP®
connectors.com

THIS DRAWING IS PROPERTY OF:
KNAPP US
12245 NATIONS FORD RD STE 403
PINEVILLE, NC 28134
WWW.KNAPPCONNECTORS.COM

MATERIAL STEEL (PHOSPHATE)		PART NAME CLIP - 13 X 58 PASS-THRU	
PART NO. 5061		SCALE 2:1	
DRAWN BY JAB	ISO NO	REVISION V01	

NOTE:

1. DIMENSIONS SHOWN IN [] ARE IN MM
2. REFERENCE PARTS ARE FOR PLACEMENT ONLY. THE INTERFACE BETWEEN THE CLIP AND SCREW IS NOT REPRESENTATIVE OF ACTUAL MODELS AND SHOULD NOT BE USED FOR FIT OR FUNCTION. REFER TO INSTRUCTION MANUAL AND POCKET INSTRUCTION DRAWINGS FOR EXACT PLACEMENT OF MOD-EEZ CLIPS AND SCREWS.



SECTION A-A

FOR REFERENCE ONLY

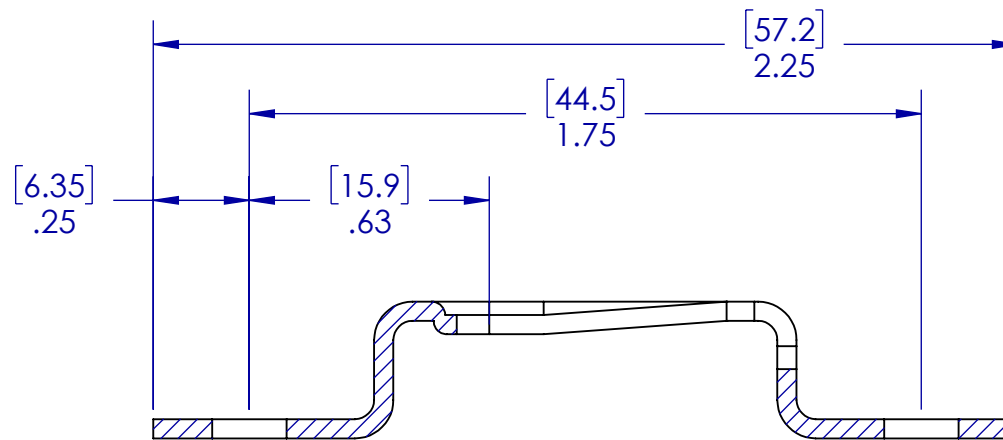
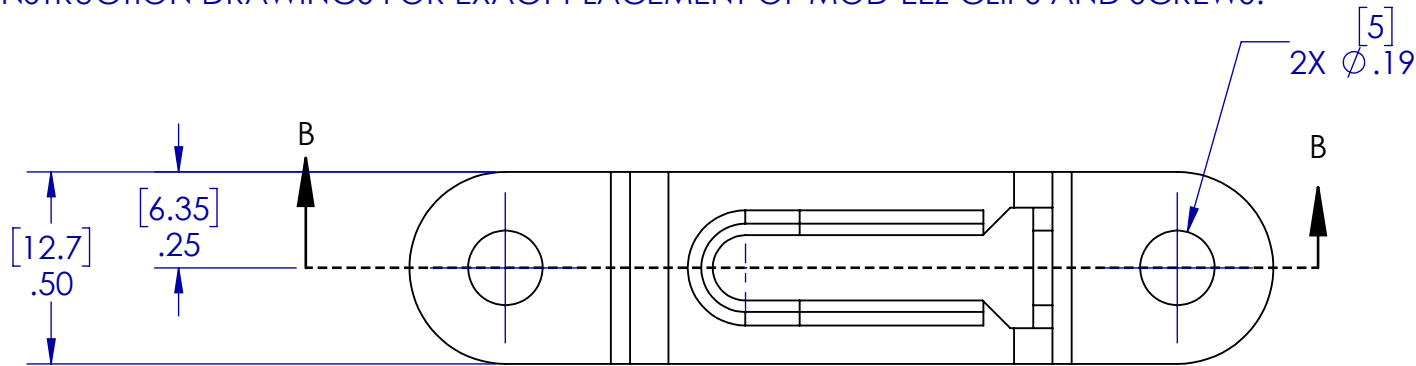
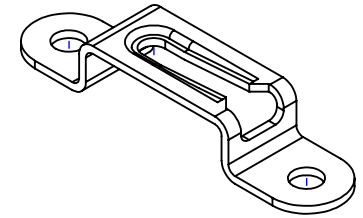
KNAPP®
connectors.com

THIS DRAWING IS PROPERTY OF:
KNAPP US
12245 NATIONS FORD RD STE 403
PINEVILLE, NC 28134
WWW.KNAPPCONNECTORS.COM

MATERIAL STEEL (PHOSPHATE)			
PART NO. 5062		PART NAME CLIP - 13 X 58 SEMI-LOCKING	
DRAWN BY JAB	ISO NO	SCALE 2:1	REVISION V01

NOTE:

1. DIMENSIONS SHOWN IN [] ARE IN MM
2. REFERENCE PARTS ARE FOR PLACEMENT ONLY. THE INTERFACE BETWEEN THE CLIP AND SCREW IS NOT REPRESENTATIVE OF ACTUAL MODELS AND SHOULD NOT BE USED FOR FIT OR FUNCTION. REFER TO INSTRUCTION MANUAL AND POCKET INSTRUCTION DRAWINGS FOR EXACT PLACEMENT OF MOD-EEZ CLIPS AND SCREWS.



SECTION B-B

FOR REFERENCE ONLY

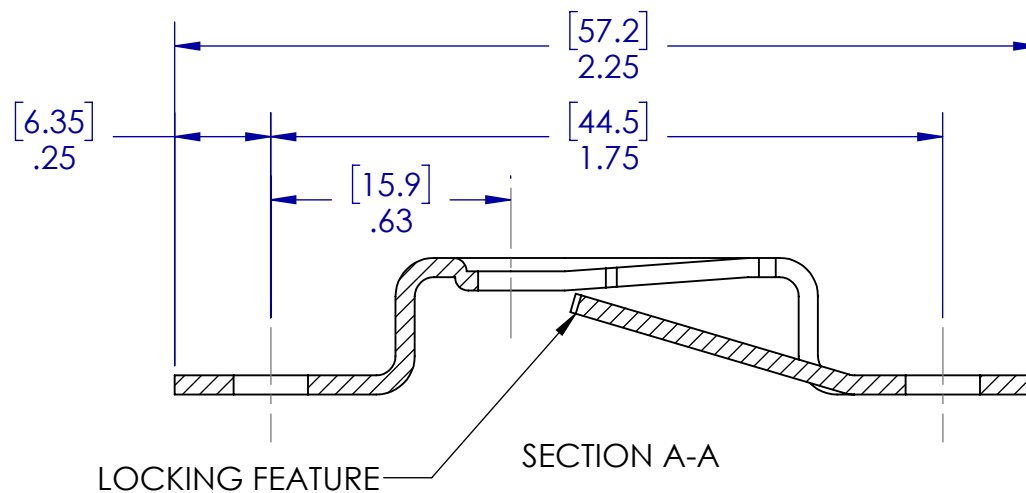
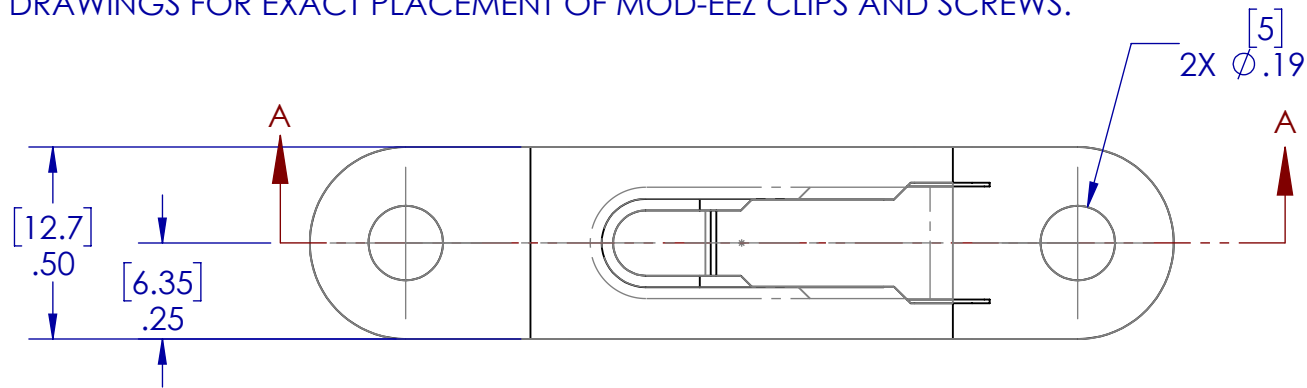
KNAPP®
connectors.com

THIS DRAWING IS PROPERTY OF:
KNAPP US
12245 NATIONS FORD RD STE 403
PINEVILLE, NC 28134
WWW.KNAPPCONNECTORS.COM

MATERIAL STEEL (PHOSPHATE)		PART NAME CLIP - 13 X 58 NON-LOCKING	
PART NO. 5063		SCALE 2:1	
DRAWN BY JAB	ISO NO	REVISION V01	

NOTE:

1. DIMENSIONS SHOWN IN [] ARE IN MM
2. REFERENCE PARTS ARE FOR PLACEMENT ONLY. THE INTERFACE BETWEEN THE CLIP AND SCREW IS NOT REPRESENTATIVE OF ACTUAL MODELS AND SHOULD NOT BE USED FOR FIT OR FUNCTION. REFER TO INSTRUCTION MANUAL AND POCKET INSTRUCTION DRAWINGS FOR EXACT PLACEMENT OF MOD-EEZ CLIPS AND SCREWS.



FOR REFERENCE ONLY

KNAPP®
connectors.com

THIS DRAWING IS PROPERTY OF:
KNAPP US
12245 NATIONS FORD RD STE 403
PINEVILLE, NC 28134
WWW.KNAPPCONNECTORS.COM

MATERIAL STEEL (PHOSPHATE)		PART NAME CLIP - 13 X 58 LOCKING	
PART NO. 5064		SCALE 2:1	
DRAWN BY JAB	ISO NO	REVISION V01	